



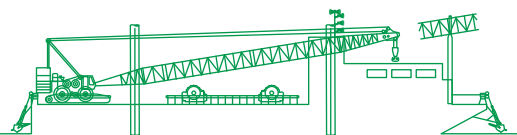
مبارك البحرية
Mubarak Marine



Barge Carrier

Eight-point mooring work and accommodation barge

A wide-body 81.9-ton crane barge designed for stability and efficient offshore support. Equipped with twin self-propelled spud systems, the vessel can anchor independently in suitable depths without the need for anchor-handling tug assistance. The barge features an eight-point mooring system, deck space and onboard accommodation to support extended offshore operations.



Registration

Year of build	2010
Builder	Dubai Shipbuilding & Engineering LLC
Port of registry	Dubai
Flag	UAE
Call sign	A6E3026
Official number	6468
Class	American Bureau of Shipping (ABS)
Owner	Mubarak Marine LLC

Dimensions

Length overall	62.7 m
Breadth moulded	27.4 m
Depth moulded	4.8 m
Draft summer	2.4 m
Max working draft	1.3 m

Machinery

Generator Set	2x 383 kw CAT C18, 1x 229 kw CAT 3406C
Water Maker	40,000 liters/day

Tonnage

GRT	2461 t
NRT	738 t

Navigation/communication equipment

AIS	1x Smartfind M5
VHF (radio)	2x Standard Horizon / 1
Navtex	1x Samyung
GPS	1x NSR
EPIRB	1x Jotron
SART	2x Samyung
Satellite phone	1x FBB 250 (client use)
Email	1x FBB 150 (vessel use)
Wind speed indicator	1x clipper
Web satellite	1x

Deck equipment

Anchor winch	8x 30 t pull, 75 t break holding electric single drum winches, 900 m of 36 mm steel wire rope, delta flipper anchors of 5 t fitted with load and pay-out sensors, remotely controlled from bridge
Mooring spuds	2x winch driven spuds on starboard side, capable to moor up to 12 m water depth

Crane

Make and model	Manitowoc 2250 Series 1 offshore pedestal crane
Type	Diesel powered, hydraulic operated lattice boom
Manufactured	2011
Capacity	81.9 t @11 m radius 13.5 t @48 m radius
Radius	11 - 48 m
Boom length	51.8 m
Counterweight	76.7 t
Wire rope	Main 28 mm x six fall Auxiliary 28 mm x single fall
Load handling	35 MT main hook block 5 MT auxiliary hook block
SWL per fall	13.5 t

Accommodation

Upper deck

Cabins	15x 2 bed w/attached bath and toilet
Client office	2x
Galley	Fully equipped w/dry storage and refrigerator storage, 1x dry store, 2x chiller, 2x freezer
Accommodation	30 persons

Main deck

Cabins	11x 4 bed w/attached bath and toilet
Mess room	40 persons
Engineer's office	1x
Clinic	1x
Gymnasium	Fully equipped
Deck toilet	1x
Laundry room	Fully equipped w/washers and dryers
Accommodation	44 persons
Total	74 persons

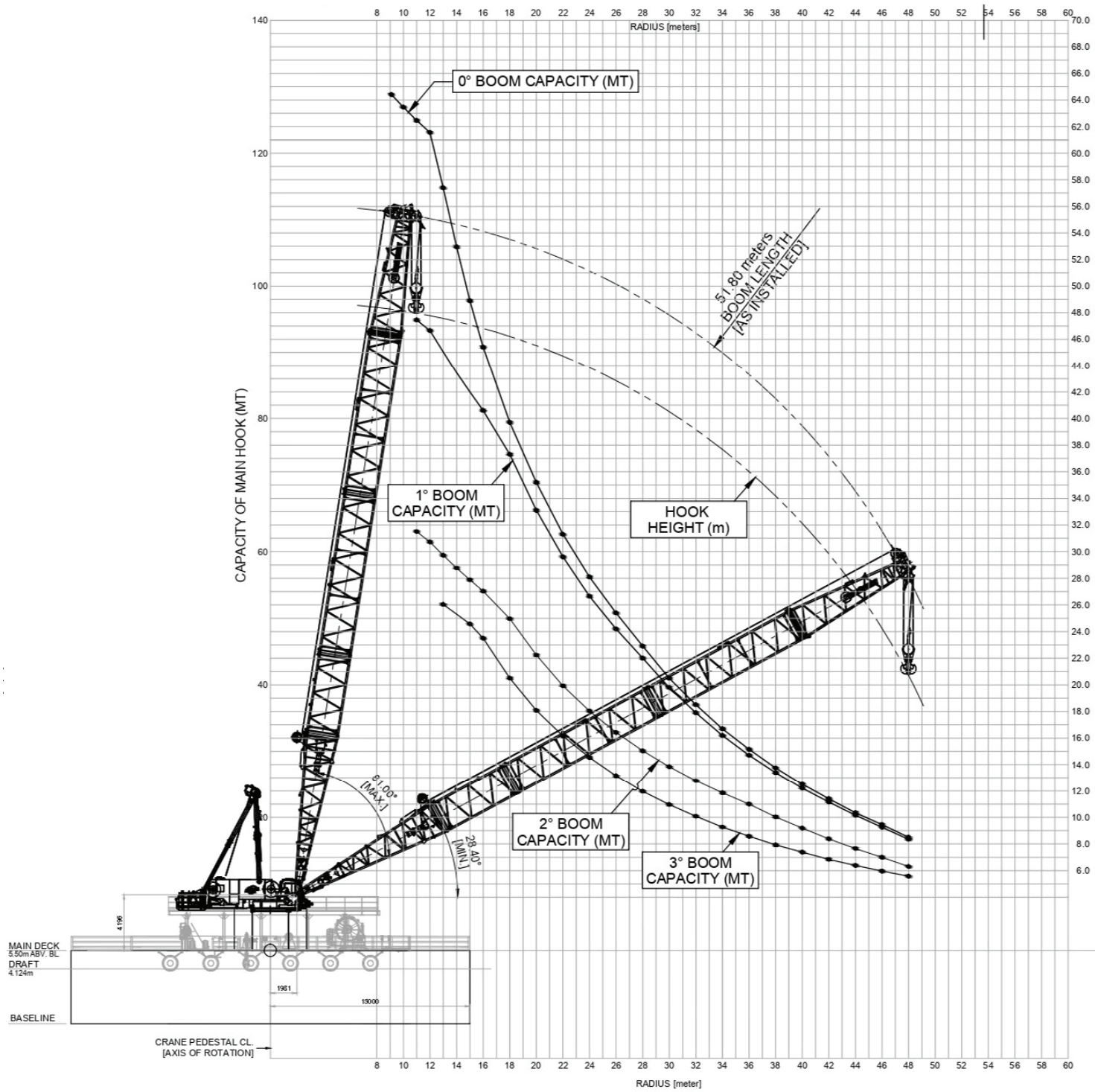
Clear deck area

Length/breadth	27x 25 = 675 m ²
Deck strength	10 t/m ²

Firefighting/safety equipment

Fire pump	2x and 1x (portable)
Fire extinguisher	29x
EEBD	8x
Lifebuoys	12x
Life jacket	147x
Rescue boat	1x 6 persons
Life raft	10x 25 persons each

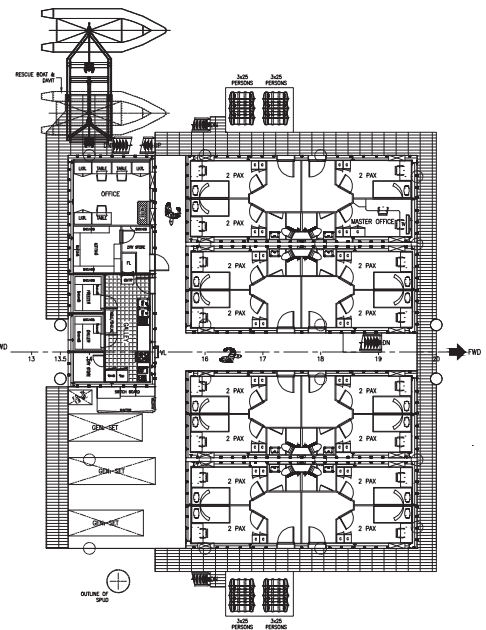
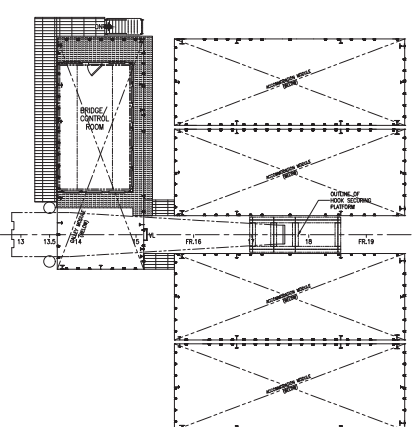
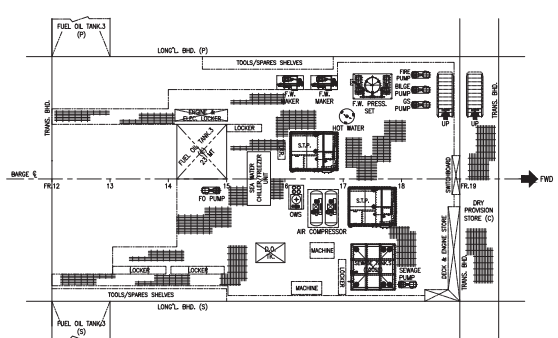
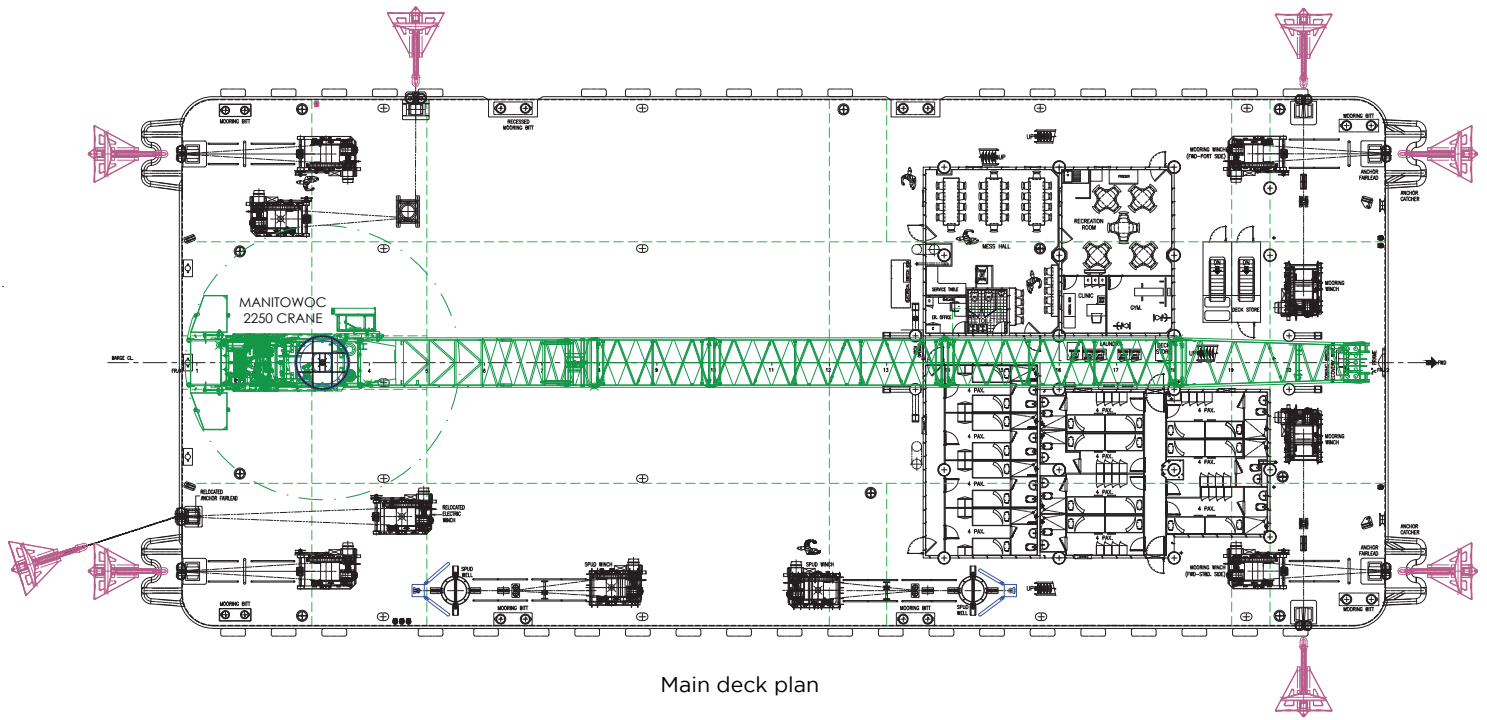
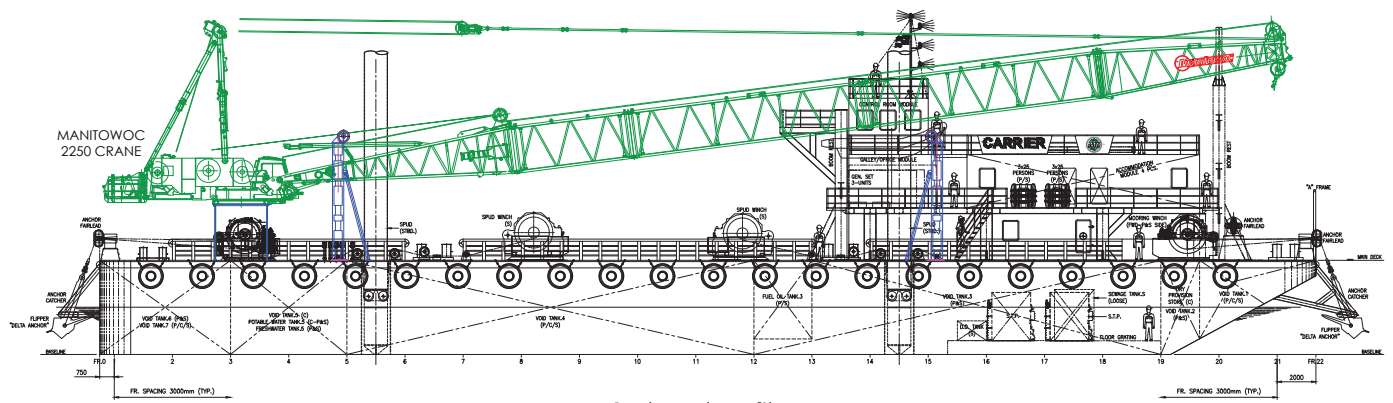




MAIN DECK
3.5m ABV, 5L
DRAFT
4.124m

CRANE PEDESTAL CL.
[AXIS OF ROTATION]

RADIUS [meter]



Mubarak Marine LLC | PO Box 7220 | Dubai Maritime City | UAE
 T+971 4 586 5200 | F +971 4 586 5299 | marketing@mubarak.ae | mubarakmarine.com

June 2026 | Version 10 | All technical details are provided as a guide only and are subject to owner's changes without notice