

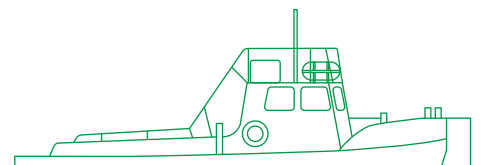


مبارك البحرية
Mubarak Marine



Simba Harbour tug

At 15 m in length, this highly manoeuvrable harbour tug is powered by Detroit marine diesel engine with an output of 500 bhp, and has accommodation for a crew of two.



Registration

Year of build	1998
Port of registry	Dubai
Flag	UAE
Official number	6245
Owner	Dubai Shipbuilding & Engineering LLC
Builder	Damen Shipyard
Operator	Mubarak Marine LLC

Dimensions

Length overall	15 m
Breadth	4.3 m
Depth	1.8 m
Draft	1.2 m

Machinery/propulsion

Main engines	Detroit diesel, type A178-189
Horsepower	500 bhp
Main engine number	5117435
Generator	Diesel, Potenza SDV 7000S

Tonnage

GRT	18.5 t
NRT	11.4 t

Performance

Speed	6 knots
Bollard pull	5.5 mt

Safety equipment

Life rafts	1x 6 persons
Life buoys	2 nos
Life jackets	4 nos
Fire extinguisher	3 nos

Capacities

Fuel oil	400 imp gal
----------	-------------

Navigation/communication equipment

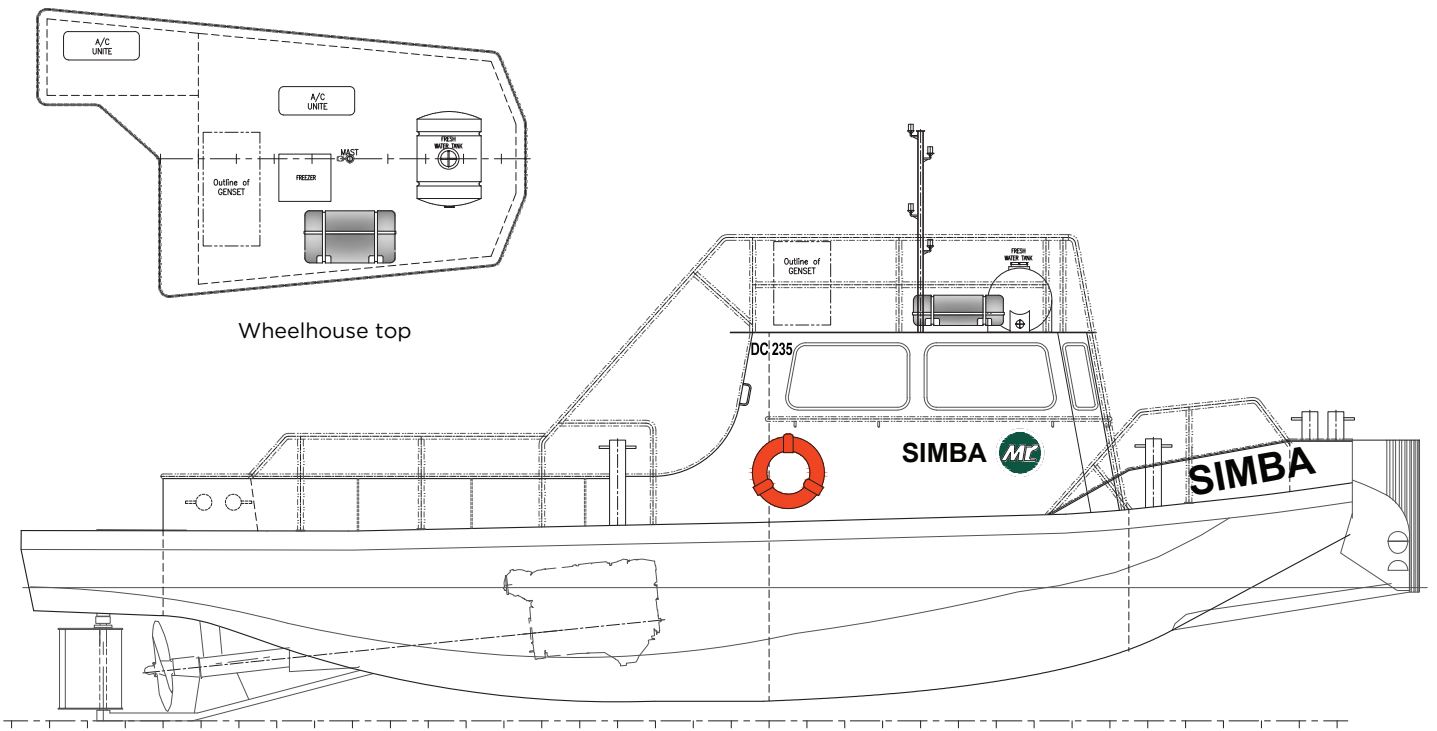
Magnetic compass	1x Seamaster
GPS navigator	1x Koden KGP-913
GPS map	1x 521S Garmin
VHF standard	1x Horizon GX1500S
VHF Radio	1x Samyung SH200
Search light	1 no

Accommodation

Total	2 persons
-------	-----------

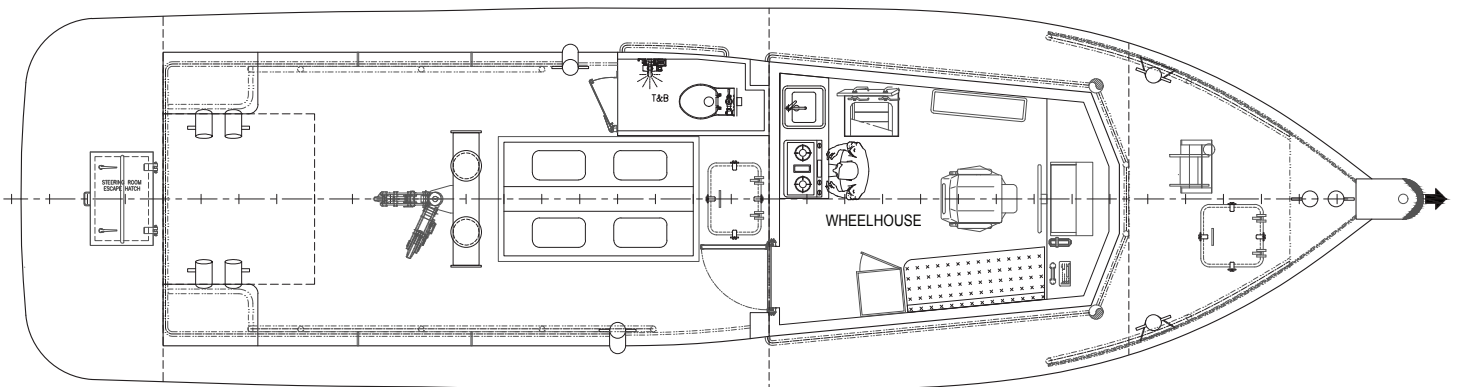
ML



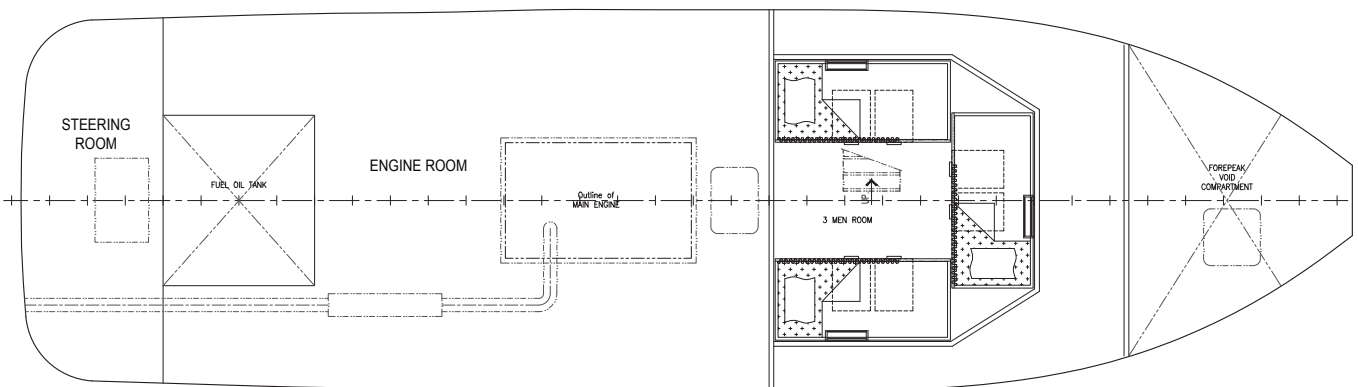


Wheelhouse top

Outboard profile



Main deck plan



Below main deck plan

Mubarak Marine LLC | PO Box 7220 | Dubai Maritime City | UAE
 T+971 4 586 5200 | F +971 4 586 5299 | marketing@mubarak.ae | mubarakmarine.com

Revision August 2023 | All technical details are provided as a guide only and are subject to owner's changes without notice