

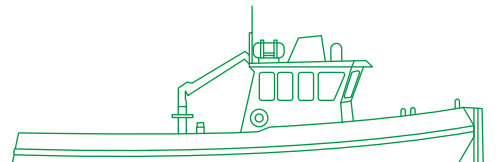


مبارك البحرية
Mubarak Marine



Shaiboub Harbour tug

At 22 m in length, this highly manoeuvrable harbour tug can hold a crew of 6 and is equipped with two General Motors marine diesel engines, producing a bollard pull of over 15 tons.



Registration

| | |
|--------------------|--------------------|
| Year of build | 1976 |
| Refurbished | 2000 |
| Builder | Damen Shipyard |
| Port of registry | Dubai |
| Flag | UAE |
| Official number | 3110 |
| Call sign | A6E2380 |
| IMO number | 7607558 |
| Class | Bureau Veritas |
| BV registry number | 33R733 |
| Operator | Mubarak Marine LLC |

Dimensions

| | |
|----------------|--------|
| Length overall | 22.1 m |
| Breadth | 6.8 m |
| Depth | 2.5 m |

Machinery/propulsion

| | |
|--------------|--|
| Main engines | 2x GM - 149 USA |
| Steering | Krampe type 3000 |
| Horse power | 1450 BHP @ 1500 rpm |
| Gears | 2x Reintjes GM type WAV |
| Generators | 1x Perkins 40 KVA 380V/3PH/50Hz Caterpillar 3054/40 KVA |
| Propellers | 2x 3 blade in Kort nozzle |

Tonnage

| | |
|-----|------|
| GRT | 91 t |
| NRT | 27 t |

Performance

| | |
|----------------|----------|
| Maximum speed | 11 knots |
| Cruising speed | 9 knots |
| Bollard pull | 15.2 mt |

Fuel consumption

| | |
|-------------------------|--------|
| Towing/full load | 3.5 mt |
| Free running | 3 mt |
| Fresh water consumption | 1.5 mt |

Navigation/communication equipment

| | |
|--|---|
| Magnetic compass | 1x Pilot-2 observator |
| GPS | 1x Kodex KGP-913 + GPS receiver Samyung SPR1400 |
| Radar | Simrad RA41C |
| Autopilot | 1x Cetrek 737 |
| Echo sounder | 1x Hondex HE-881 |
| SSB | 1x Raytheon RAY-152 |
| VHF | 1x Sailor RT 2048 |
| 1x AIS Haiyang HS series, 1x VHF Marine Samyung STR-6000A, 1x Navtex JMC - NT900, 1x chart plotter JMC NP20NT | |

Capacities

| | |
|-------------|---------------------|
| Fuel oil | 34 m ³ |
| Fresh water | 15.3 m ³ |

Lifting/handling

| | |
|----------|----------------------------------|
| Crane | Atlas telescopic hydraulic crane |
| Capacity | 2 mt |

Windlass/anchors

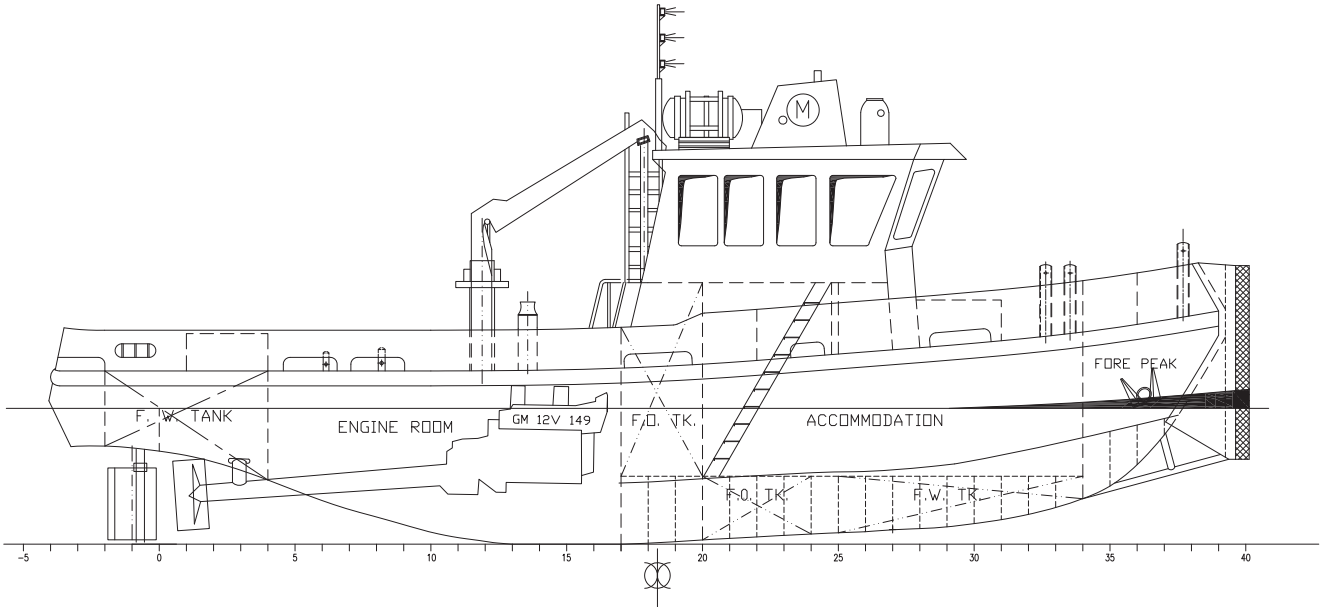
| | |
|----------|-------------------|
| Windlass | Ridderinkhof Uni |
| Chain | 2x 450 ft x 19 mm |

Firefighting/safety equipment

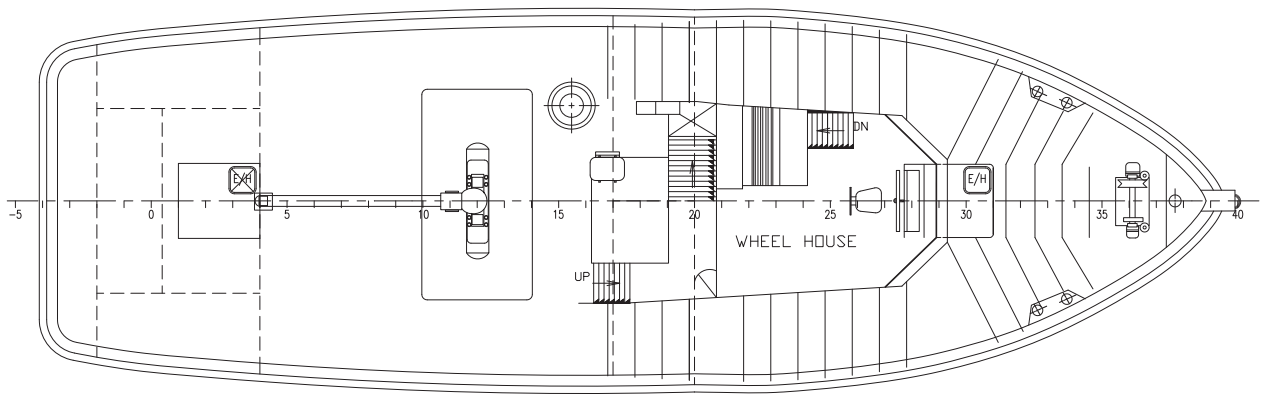
| | |
|--|--|
| Life rafts | 1x 10 persons |
| Life buoys | 4 nos |
| Life jackets | 14 nos |
| Fire extinguisher | 3x DP, 3x CO2 |
| Fire pump | 1x main fire pump, 1x portable fire pump |
| 1x EPIRB, 1x SART, 6x hand flares, 4x hand held rocket parachute flares, 2x orange smoke signals | |

Accommodation

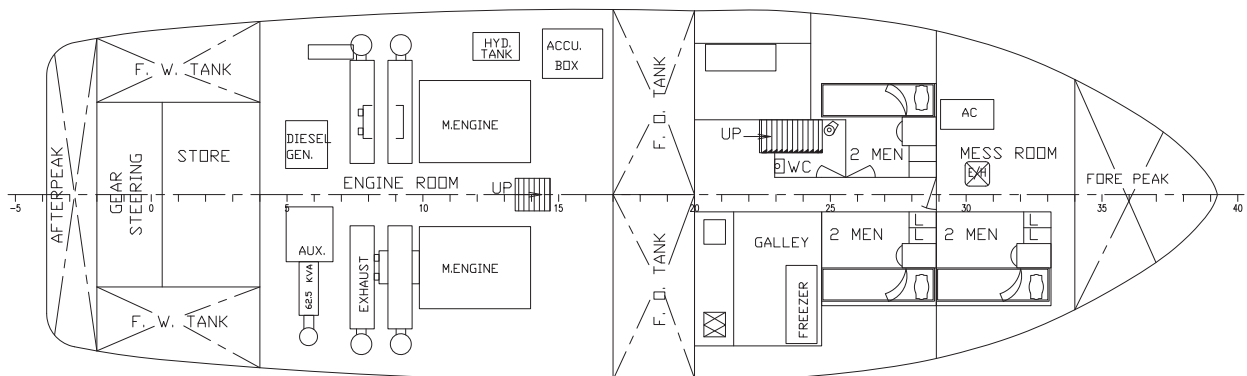
| | |
|------|------------------------|
| Crew | 3x cabin, 2x berth = 6 |
|------|------------------------|



Outboard profile



Main deck plan



Below main deck plan

Mubarak Marine LLC | PO Box 7220 | Dubai Maritime City | UAE
 T+971 4 586 5200 | F +971 4 586 5299 | marketing@mubarak.ae | mubarakmarine.com

Revision June 2023 | All technical details are provided as a guide only and are subject to owner's changes without notice