



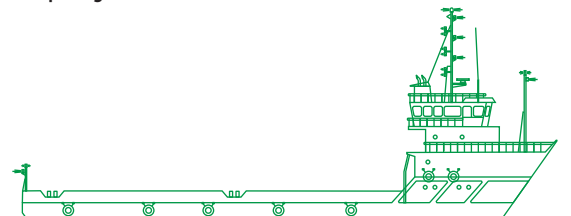
# مبارك البحرية Mubarak Marine



## Sea bridge

### Multipurpose supply vessel with forward cargo ramp

A multipurpose supply vessel with a shallow draft and a spacious wooden sheathed deck. Good freshwater and fuel tank capacities. The forward cargo ramp makes it ideal for trucks when quayside access is impossible, and the only access is a beach.



## Registration

Year of build	1998
Builder	Panyu Lingshan Shipyard, Guandong, China
Type	Multipurpose supply vessel
Class	RINA
Owner	United Offshore Construction and Diving Services Ltd
Manager	Mubarak Marine LLC

---

## Dimensions

Length overall	53.8 m
Breadth	13.8 m
Depth	3.8 m
Draft summer	2.9 metres (fully loaded)

---

## Tonnage

GRT	769 t
NRT	231 t
DWT	961.8 t

---

## Machinery

Main engines	2x Caterpillar 3412
Horsepower	2x 900 = 1800 BHP
Main generators	2x Weichai Heavy Machinery (installed 2019)
Power	2x 120 kW
Bow thruster	1x 224 kW cummins with 2.5 tons thrust
Sewage system	1x Delta STPN-250 capacity 20 persons
Air conditioning	Centralised

---

## Capacity

Fuel oil	409.3 m <sup>3</sup>
Cargo freshwater	744.5 m <sup>3</sup> (filtering system)
Cargo pumps	1x fuel oil and 1x for freshwater

---

## Performance

Speed	10 knots (approx.)
Fuel	5.5 tons per day full speed (approx.)

---

## Crew

Crew	18
------	----

---

## Cargo deck

Clear deck space

45m x 13.8m = 621 m<sup>2</sup>

Ramp passage

10m x 5m (length x width)

Dump track capacity

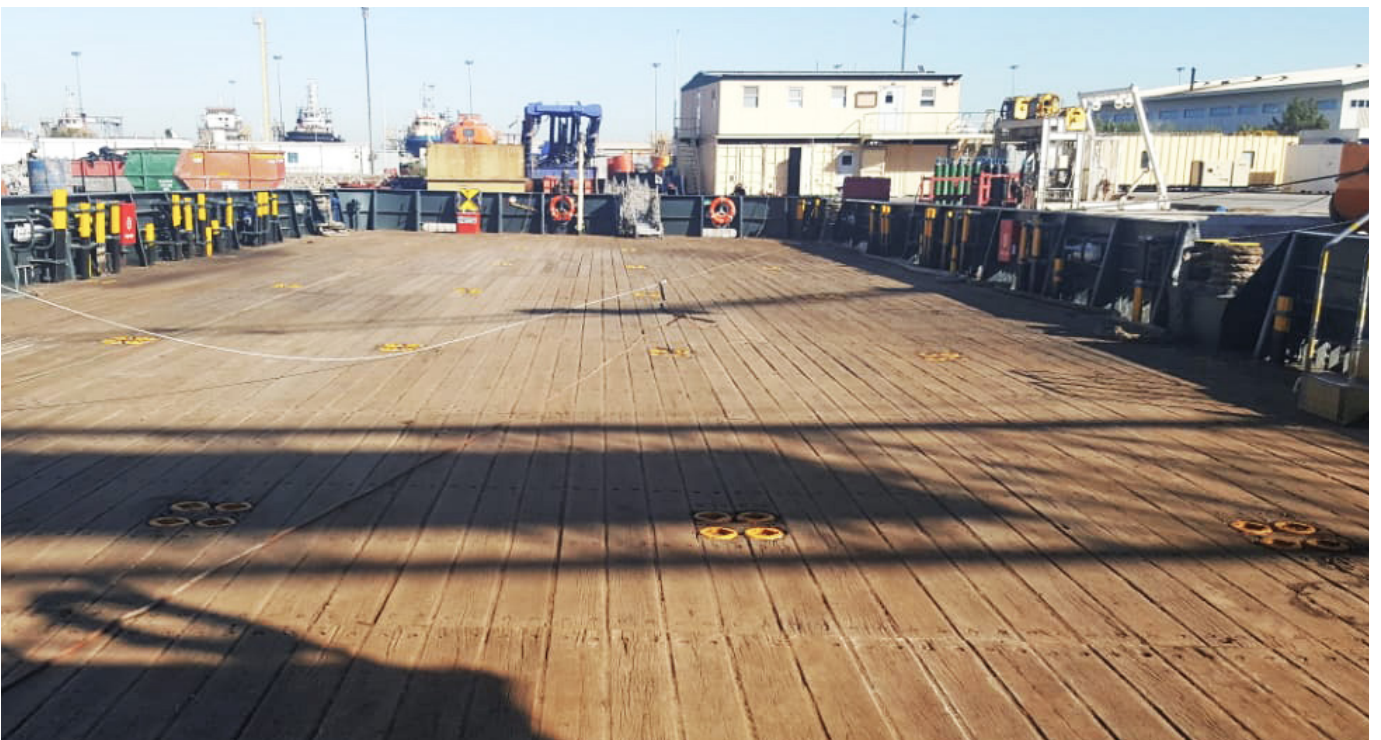
14 to 16 nos.

Container capacity

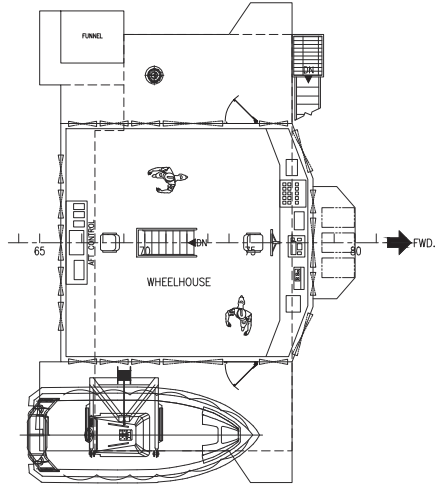
60 nos. of 20ft. containers

Container lashing

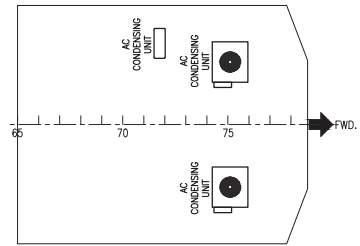
Fitted



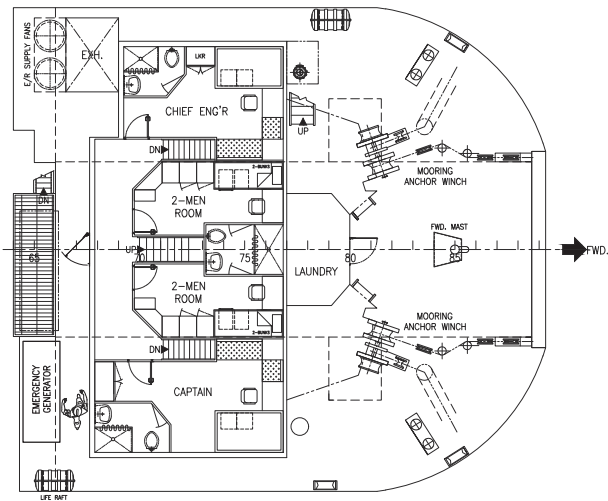




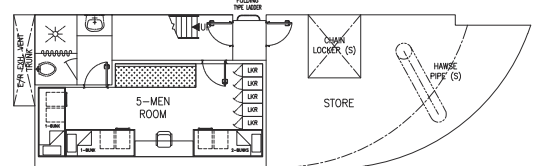
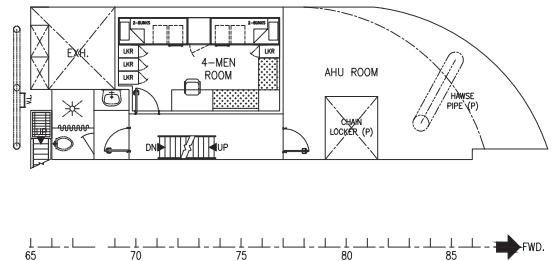
Wheelhouse deck



Wheelhouse top



Forecastle deck



Lower forecastle deck