

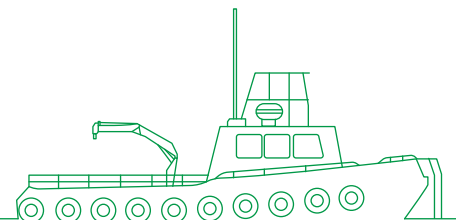


مبارك البحرية Mubarak Marine



Mubarak DMC Harbour tug

At nearly 17 m in length, this highly manoeuvrable multipurpose harbour tug packs a bollard pull of 11 tons, powered by two Caterpillar marine diesel engines with an output of 940 bhp, and has accommodation for 4 crew members.



Registration

Year of build	1998
Builder	Damen Shipyard
Port of registry	Dubai
Flag	UAE
Official number	0007568
Call sign	A6E2898
IMO number	9142722
Class	Bureau Veritas
Operator	Mubarak Marine LLC

Dimensions

Length overall	16.9 m
Beam overall	5.2 m
Max draft	2.5 m

Machinery/propulsion

Main engines	2x Caterpillar 3408 B-TA
Horse power	940 bhp
Generators	2x Perkins/Stanford 24 kW
Propeller	2x fixed pitch propellers in nozzles

Tonnage

GRT	41 t
NRT	21 t

Performance

Cruising speed	10 knots
Economic speed	8 knots
Bollard pull	11.8 mt

Accommodation

Total	4 berths
-------	----------

Firefighting/safety equipment

Life rafts	2x 6 persons
Life jackets	9 nos
Life buoys	3 nos
Fire extinguisher	3x DCP, 3x foam, 1 CO2, 1x 45 kg fixed CO2 system for engine room
Fire pump	2x fire hydrant
Emergency fire pump	1 no

Navigation/communication equipment

Magnetic compass	1x Kelvin Hughes MK12
Radar	1x Furuno RDP-112
VHF	1x Sailor RT2048, 1x RM2042, 1x Sailor 7222 DSC, VHF potable NAVC
GPS	1x Furuno GP-31
Echo sounder	1x Hondex HE-770
Navigation light	1x set
AIS	Class B (Allec 201)
Public address	SSB45 EM AHUJA
Chart plotter	1x JMC
EPIRB	Model SN MCMURDO/ES/100-58664
Radar transponder	(SART) NSR-NRT-1000

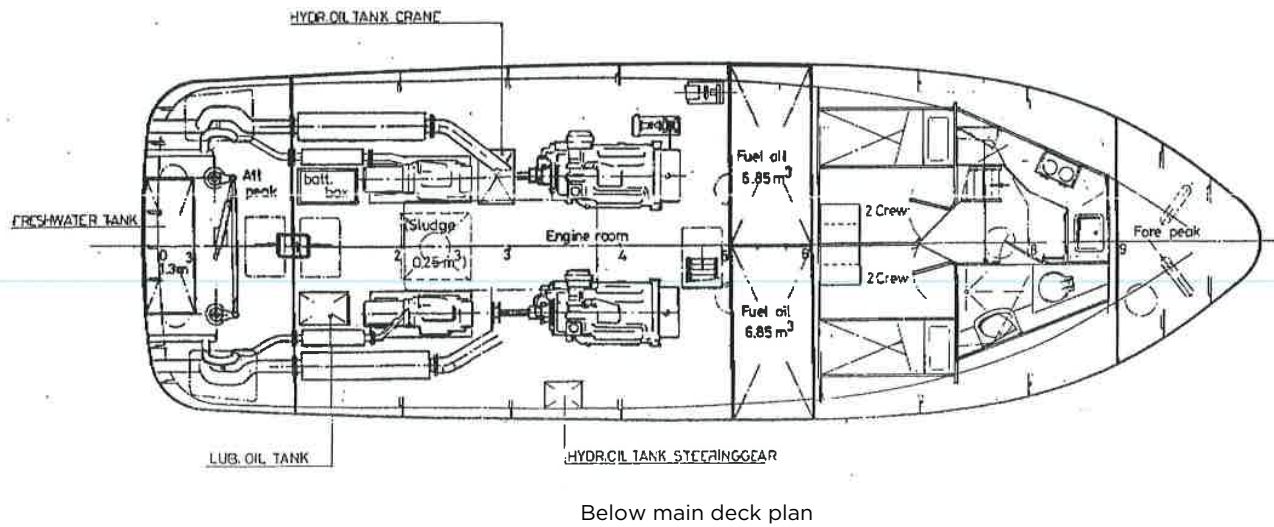
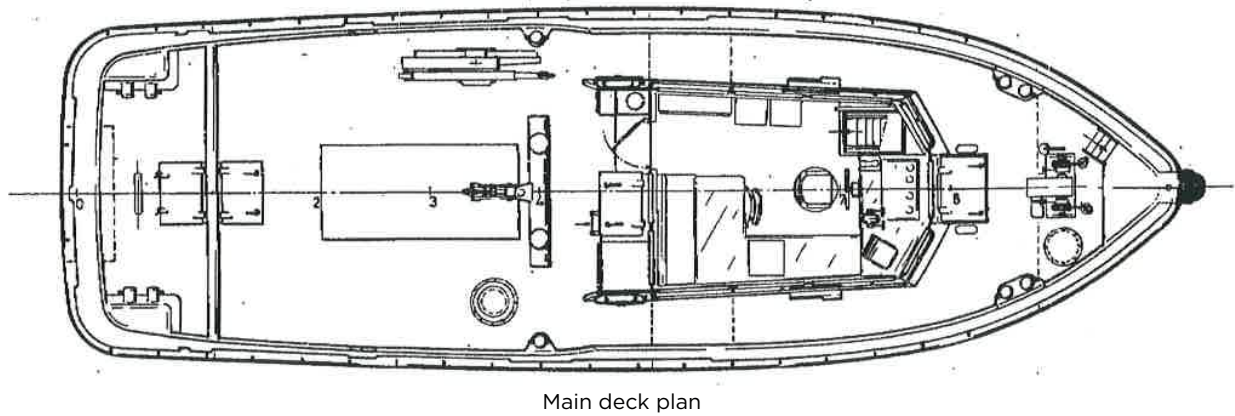
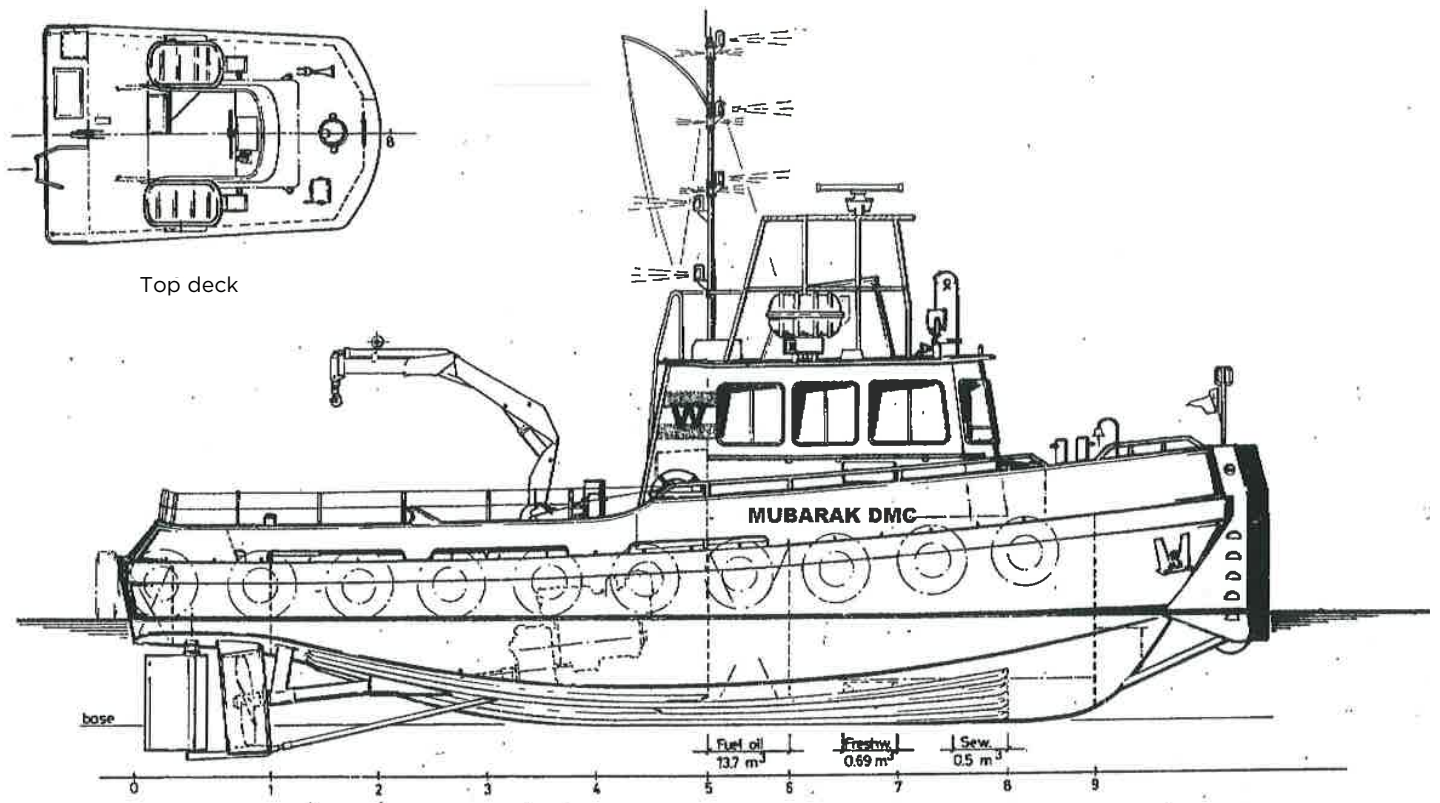
Capacities

Fuel oil	13.7 m ³
Portable water	1.8 m ³

Deck equipment

Towing hook	1x 12 t with mechanical quick release
Windlass	1x electric driven
Chain	2x 12.5 mm diameter 82.5 m
Anchors	2x 80 kg stockless





Mubarak Marine LLC | PO Box 7220 | Dubai Maritime City | UAE

T+971 4 586 5200 | F +971 4 586 5299 | marketing@mubarak.ae | mubarakmarine.com

Revision July 2023 | All technical details are provided as a guide only and are subject to owner's changes without notice