



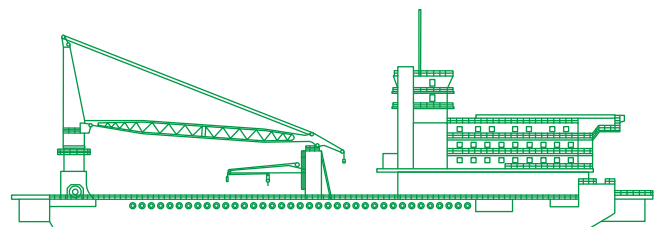
مبارك البحرية
Mubarak Marine



Millennium-3

DP2 multi-purpose work barge

At 126 m in length, and with a deck area of 1800 m², this modern multi-purpose work barge can accommodate 239 people in comfort and safety, and includes a fully equipped mess room, workshop facilities, medical facilities, and a helideck.



Registration

Year of build	2011 Nantong Dongjiang Shipyard Co Ltd
Year of conversion	2018 Dubai Shipbuilding & Engineering LLC
Port of registry	Moroni
Flag	Union of Comoros
BV class number	34260R
Call sign	D6 A2 253
IMO number	8799358
Class	Bureau Veritas
Class notation	HULL, MACH, AUT_UMS, DYNAPOS AM/AT R HEL/ALM special service/utility-construction vessel, unrestricted MODU
Owner	PT David Marine Inc
Managed/operated by	Mubarak Marine LLC

Dimensions

Length overall	126.6 m (including thruster box fwd and aft)
Breadth moulded	31.7 m
Depth moulded	7.3 m
Summer draft	4.5 m, 4.5 m (external fr. underside), 15881.3 t
Displacement @ zero trim	

Machinery/propulsion

Main generator	5x 620 kW @1800 rpm Caterpillar 3412DITA, 1x 599 kW @1800 rpm CaterpillarC18
Emergency/harbour generator	1x 199 kW @1800 rpm Scania 3056DITA c/w Leroy Somer LL3024F, 44v/3ph/60 hz
Fresh water maker	2x 50 m ³ /day reverse osmosis
Sewage treatment	2x 150 men, WCB-150
Oil water separator	1x 1 m ³ /h , 15 ppm alarm
Propulsion	4 nos thrustmaster model TH-2000RN hydraulic inboard 2 levels retractable azimuth thruster
Prime mover	4 units Caterpillar 3516B box cooled diesel engine
Rating (TCR)	4x 2000 BHP (5965.6 kW) = 8000 BHP

Tonnage

GRT	11438 t
NRT	3432 t
Deadweight	9738 mt
Displacement	15889 mt

Capacities

Fuel oil	1727 m ³
Fuel oil transfer P/P	1x 118 cbm/hr @ 60 head, 1x 12 m ³ /h Pr.0.33 Mpa P = 4 kW
Fresh water	2972 m ³
Fresh water transfer P/P	1x 120 cbm/hr @ 60m head
Ballast fresh water	5664 m ³
Foam/detergent	1 m ³ /nil
Freezer room	50 m ³
Chiller room	55 m ³
AC unit	2x 133 t = 266 t cooling capacity
Deck cargo	6000 t

Accommodation

Single berth cabin	7 nos
Double berth cabin	46 nos
Fourth berth cabin	35 nos
Offices	6 total
Conference room	1x 20 persons seating
TV room	1x 42 persons seating, 1x 10 persons seating
Mess room	1x officer mess with 30 persons seating, 1x main mess with 150 persons seating
Recreation room	1x main room with 80 persons seating, 1x officer room with 15 persons seating, 2x prayer room, 1x meeting room, 1x change room, 1x FWD control room, 1x laundry/drying room, 1x dry provision room, 1x winch control room, 1x arrival/departure room for up to 25 persons, 1x barge radio room, 1x game room, 1x gym room, 1x smoking room
Hospital	2x single berth with attached paramedic room
Workshop facility	1x complete with lathe, drilling and grinding machines, electric saw, oxy-acetylene and welding machine
Ships' control	sixth deck (operation room) and control deck
Total	239 persons

Dynamic positioning system

Make and model	Wartsila DP2 NACOS Platinum, CL2 Dynamic Positioning System
Control/signal	CP1-SPU-64, signal control
Processor unit	Processor unit-single CP, bulkhead mount
DP reference system	2x DGPS, Fugro Seastar 9205 (L1/L2,GPS &GLONASS), 1x laser range and bearing system, GCS Cyscan Absolute signature, 1x range and bearing Sensor, Mini-RadaScan, 1x hydro acoustic, 1x Tautwiresystem
Targets	1x target, laser, 8-way PrismCluster, 1x target, radar reflector (mini-RadaScan)

Navigation/communication equipment

GMDSS	Area 3 comprising, 1x Sailor MF/HF 6310 150w, 2x Sailor 6222 VHF DSC class A, 2x Sailor 6110 Mini-C with (LRIT & SSAS)
SSB	1x Furuno FS-1570T
Inmarsat F	1x Furuno Felcom 70
VHF radio	2x Furuno FM 3000 with built in DSC, 1x Furuno FM 8800S with built in DSC
Navtex receiver	1x Furuno NX 700A
SART	2x Mc Murdo S4
EPIRB	1x Mc Murdo E5
GPS	1x Furuno GP150 and 1x Koden KGP915
Weather fax	1x Furuno FAX408
ECDIS	1x Simrad 5024
Gyro compass	3x standard 22 (Anschutz)
Portable VHF radios	3x Mc Murdo R2 and 3x Motorola GP-328
Portable marine VHF radio	1x ICOM IC-A6 (HLO)
Radar	1x X band Koden MRD108P and 1x S band Simrad Argus
Echo sounder	1x Furuno FE700
Satellite compass	1x Furuno SC502
Speed log	1x JLN 205MK2 (JRC)
Doppler current meter	1x JLN 652BB (JRC)
BNWAS	1x Navitron NT-991
VDR	1x Netwave NW-6000
Gyro repeaters	3x Navitron NT-920DHR, 1x Navitron NT920-AHR, 2x wing bearing repeater
Autopilot	1x Navitron NT-999GBD

Deck equipment

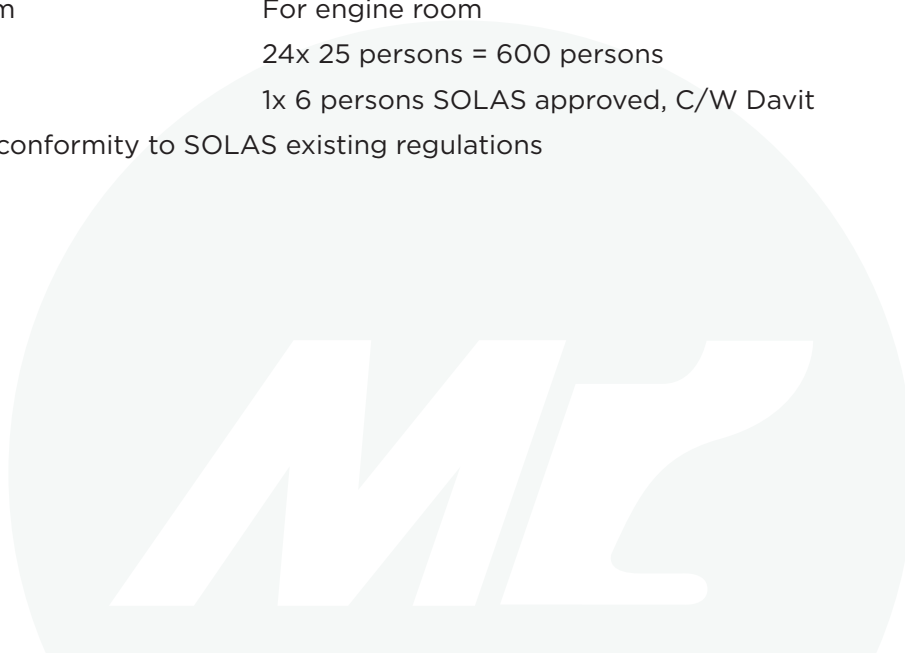
Mooring winches	8x single drum electro-hydraulic Mentrade HMW, 90 t tension and line-out sensors, 8x 1400 m length x 52 mm Ø, wire rope
Spud legs	1.2 m Ø x 22 m length
Spud winches	2 nos x 50 t pull, electric winches, drum capacity 180 m x 38 m Ø wire rope
Main crane	1x 300 mt Huisman Pedestal, mounted offshore crane 46 m
Main hoist	300 mt x 11 m radius, 72 mt @44 radius
Auxiliary hoist	30 mt @30 m/min, 9.2-53.6 m radius
Anchors	8x delta flippers of 7 t each
Helideck	Designed for AW101, Sikorsky S61N and Sikorsky S92A, 25.40 m length x 25.40 m width D-value 25 m

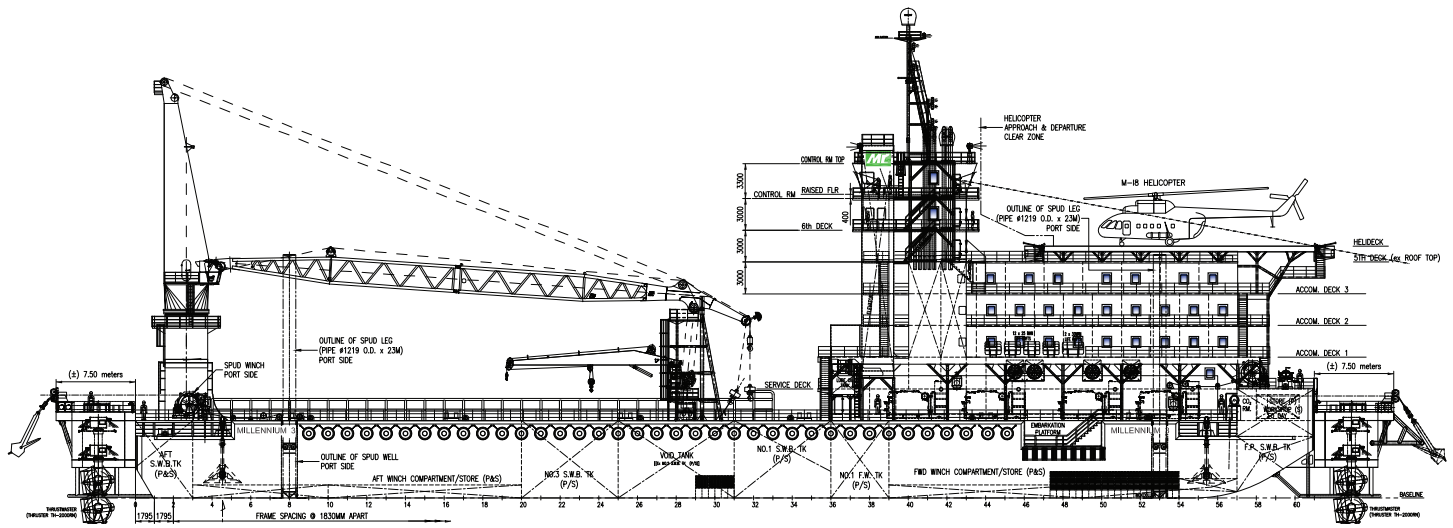
Clear deck area

Work deck area	1800 m ²
Deck strength	12.5 t/m ²

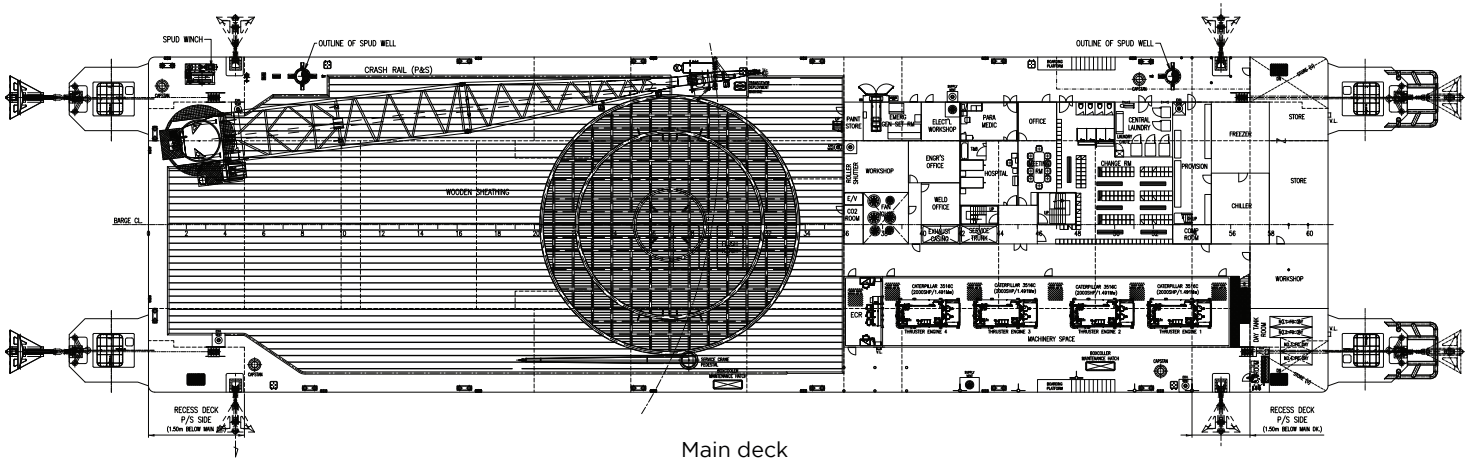
Firefighting/safety equipment

Fire pump	1x 150 cu.m/h @110 m head
Fire detection	Smoke and heat detection system
Sprinkler system	Covering all areas of accommodation
Gas detection	H2S and LEL detection
Mist system	Covering all machinery spaces
Fixed CO ₂ system	For engine room
Life raft	24x 25 persons = 600 persons
Rescue boat	1x 6 persons SOLAS approved, C/W Davit
Barge is built in conformity to SOLAS existing regulations	

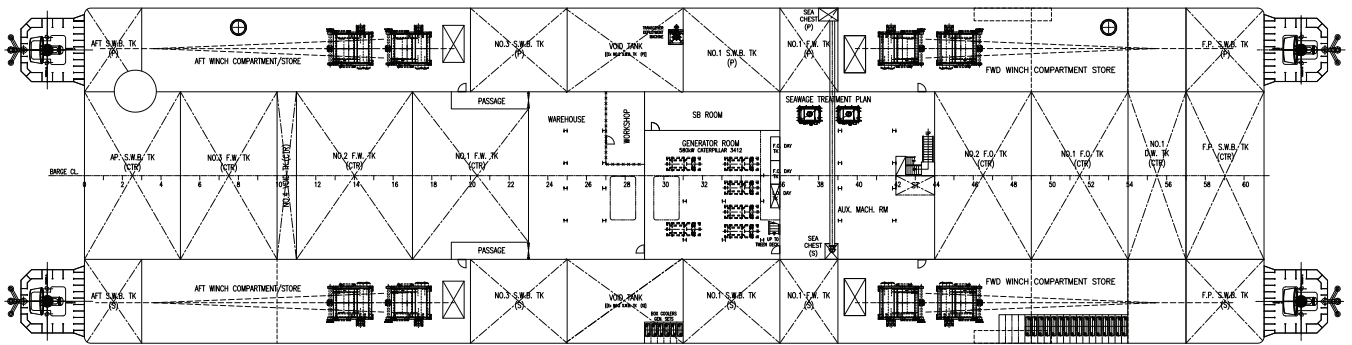




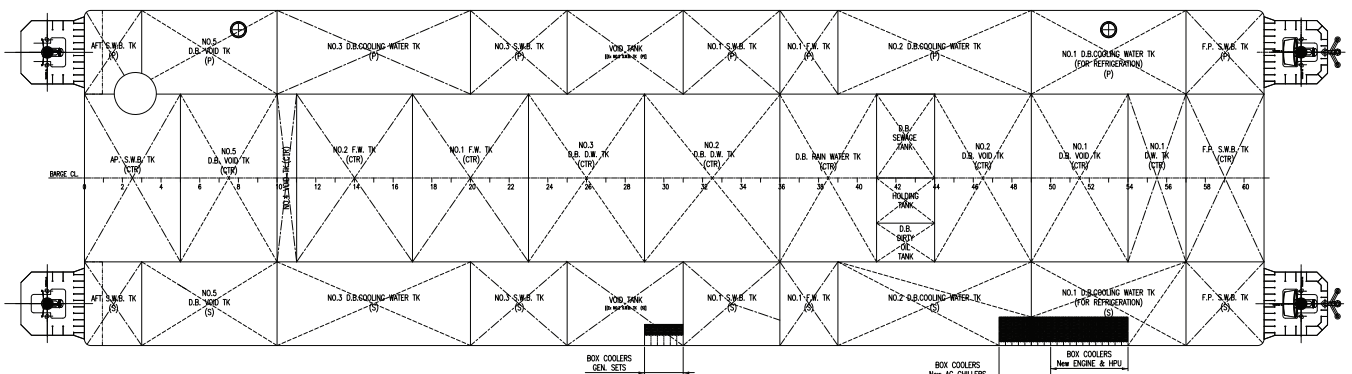
Outboard profile



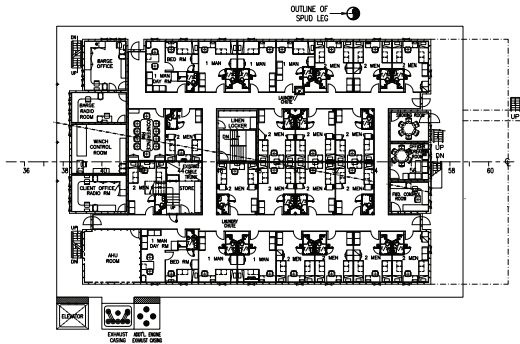
Main deck



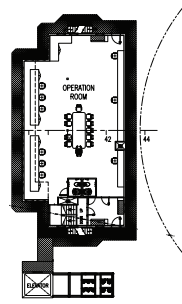
Below main deck



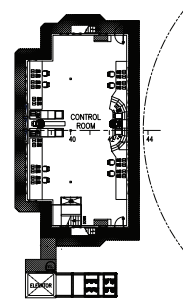
Bottom plan



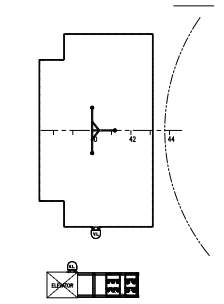
Accommodation deck 3



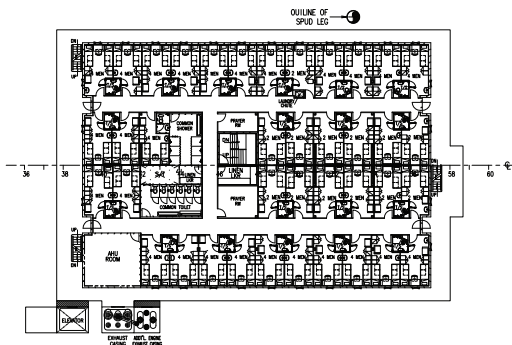
Sixth deck plan



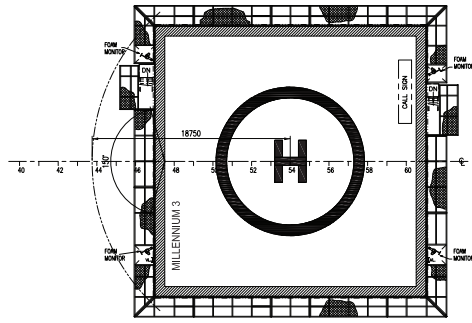
Control room



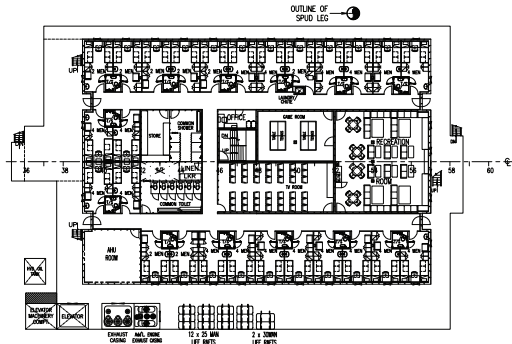
Control room top



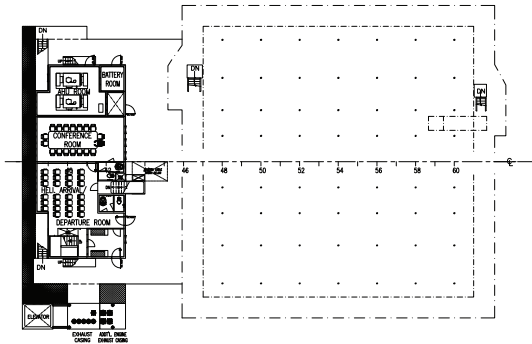
Accommodation deck 2



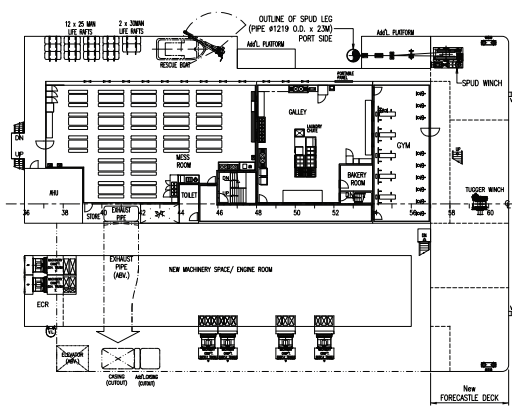
Helideck plan



Accommodation deck 1



Fifth deck (roof top)



Service deck

Mubarak Marine LLC | PO Box 7220 | Dubai Maritime City | UAE
 T+971 4 586 5200 | F +971 4 586 5299 | marketing@mubarak.ae | mubarakmarine.com

Revision August 2022 | All technical details are provided as a guide only and are subject to owner's changes without notice