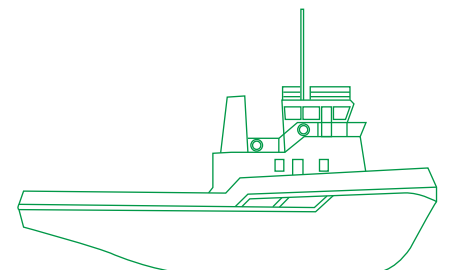




Gulf Symphony

Tug

Lorem ipsum dolor sit amet, consectetur adipiscing elit, sed diam nonummy nibh euismod tincidunt ut laoreet dolore magna aliquam erat volutpat. Ut wisi enim ad minim veniam, quis nostrud exerci tation ullamcorper suscipit lobortis nisl ut aliquip ex ea commodo consequat. Duis autem vel eum iriure dolor in.



Dimensions

Length Overall | 28.4 metres
Length BP | 24.9 metres
Breadth Overall | 9.1 metres
Breadth Moulded | 8.8 metres
Depth Moulded | 4.2 metres
Draft | 3.2 metres

Tonnage

GRT | 220 tons
NRT | 120 tons

Navigation/communication equipment

Magnetic Compass | SESTREL -2625
GPS | 1x JMC GP-200
Radar | 1x DECCA RR916A
Radar-Chart Plotter | 1x KODEN MDP-1241
Autopilot | 1x Coursemaster CM650
Echo Sounder | 1x SIMRAD ED161
EPIRB | 1x MC Murdo E3
Fixed VHF | 2x Sailor RT20-48
Portable VHF | 2x HT940
Satellite Phone | 1x Thuraya (Phone and Fax)

Towing winch

Winch | STEEN Single Drum
Towing Hook | MAMPAEY SWL 350T
Towing Wire | 250 metres x 37 mmØ

Deck crane

Hydraulic Knuckle Boom
UP Telescopic of 3 mt

Accommodation

Total | 10 men

Machinery/propulsion

Main Engine | 2x Caterpillar D399 PCTA
Horse Power | 2,500 BHP
Generators | 2x Caterpillar 3304 PCT
@1,200 rpm
Reduction Gear | 3.954:1
Bow Thruster | 1x JASTRAM 103 BHP

Registration

Year of Build | 1980
Builder | Bodewes, Holland
Port of Registry | Dubai
Flag | UAE
Call Sign | A6E3010
IMO Number | 8008137
Class | Lloyds Register
Owner | Mubarak Marine LLC

Performance

Speed | 10 knots
Bollard Pull | 32.7 metric tons

Fuel consumption

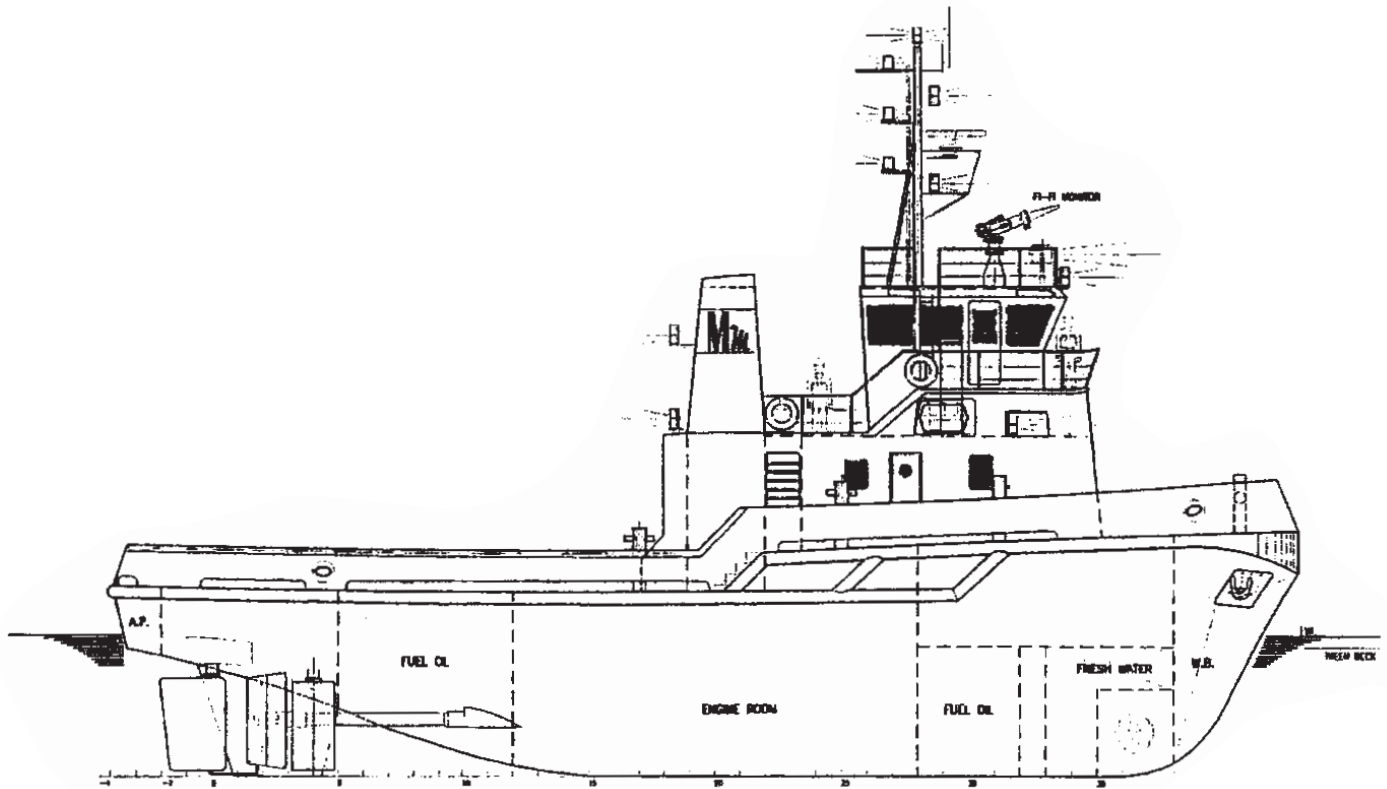
Towing/Free Running | 4 /3.2 metric tons
Fresh Water Consumption | 2.5 metric tons

Capacity

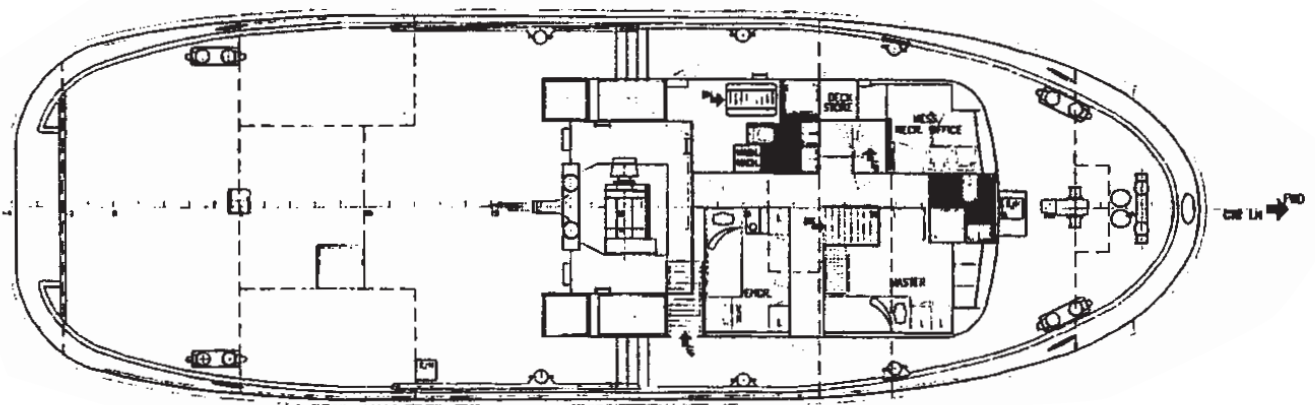
Fuel Oil | 81 metric tons
Fresh Water | 35 metric tons
Water Ballast | 35 metric tons

Firefighting/safety equipment

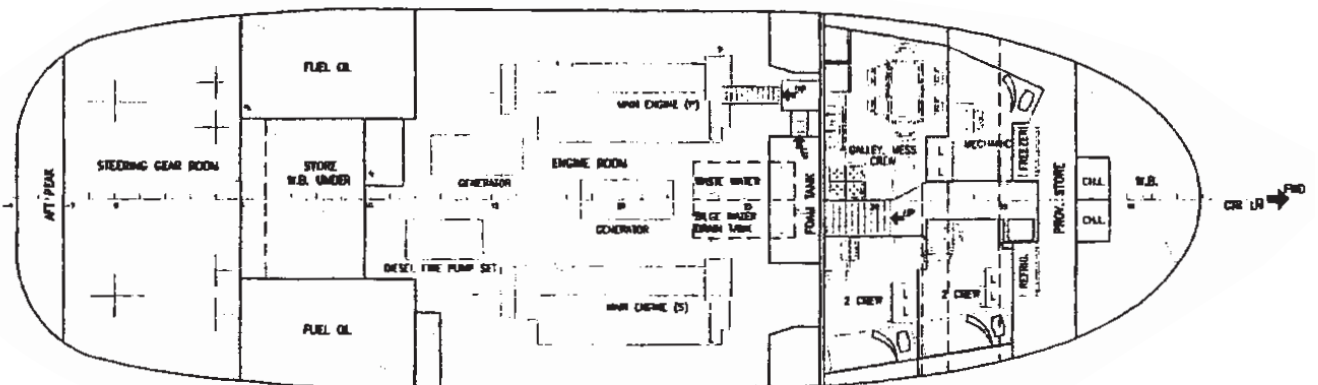
Life Rafts | 1x 15 = 15nos.; 1x 12 = 12 nos.
Life buoys/Life jackets | 6 nos./20 nos.
Fire Pump | Remote Controlled (500 m³/hr)
Monitor/Foam | 1x located on bridge/4 m³



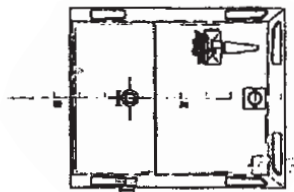
Outboard profile



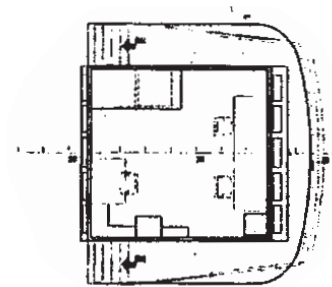
Main deck



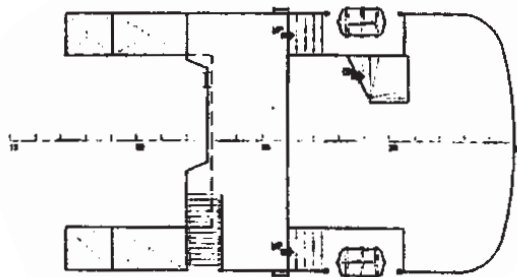
Tween deck



Top deck



Wheelhouse deck



Lower bridge deck