

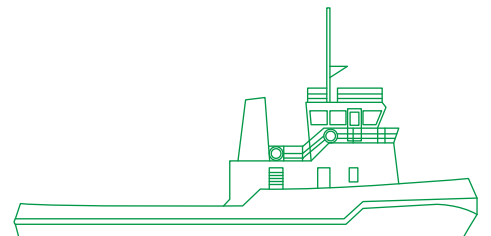


مبارك البحرية
Mubarak Marine



Gulf Symphony Offshore towing and FiFi tug

At over 28 m in length, this multipurpose tug holds a crew of 10, and packs a bollard pull of over 32 tons. It is ideal for offshore towage, anchor handling and firefighting duties, and for supporting marine construction and diving projects.



Registration

Year of build	1980
Builder	Bodewes
Port of registry	Dubai
Flag	UAE
Official number	5066
Call sign	A6E3010
IMO number	8008137
Class	Lloyds Register
Operator	Mubarak Marine LLC

Dimensions

Length overall	28.5 m
Length BP	25 m
Breadth overall	9.1 m
Breadth moulded	8.8 m
Depth	4.2 m
Draft	3.2 m

Machinery/propulsion

Main engines	2x Caterpillar D399 PCTA
Horse power	2500 BHP
Generators	2x Caterpillar 3304 PCT @1200 rpm
Reduction gear	3.954:1
Bow thruster	1x JASTRAM 103 BHP

Tonnage

GRT	220 t
NRT	120 t

Performance

Speed	10 knots
Bollard pull	32.7 mt

Fuel consumption

Towing/free running	4/3.2 mt
Fresh water consumption	2.5 mt

Accommodation

Total	10 persons
-------	------------

Navigation/communication equipment

Magnetic compass	SESTREL-2625
GPS	1x JMC GP-200
Radar	1x DECCA RR916A
Radar-chart plotter	1x KODEN MDP-1241
Autopilot	1x Coursemaster CM650
Echo sounder	1x SIMRAD ED161
EPIRB	1x MC Murdo E3
Fixed VHF	2x Sailor RT20-48
Portable VHF	2x HT940
Satellite Phone	1x Thuraya (phone and fax)

Capacities

Fuel oil	81 mt
Fresh water	35 mt
Water ballast	35 mt

Towing winch

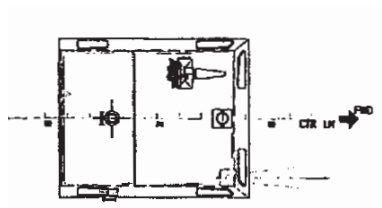
Winch	STEEN single drum
Towing hook	MAMPAEY SWL 350T
Towing wire	250 m x 37 mm
Deck crane	Hydraulic knuckle boom, UP telescopic of 3 mt

Safety equipment

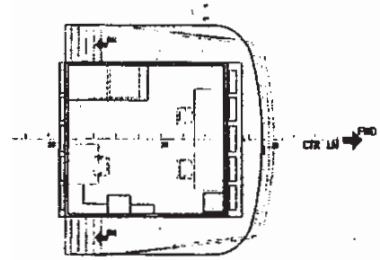
Life rafts	1x 15 and 1x 12
Life buoys	6 nos
Life jackets	20 nos

FiFi installation

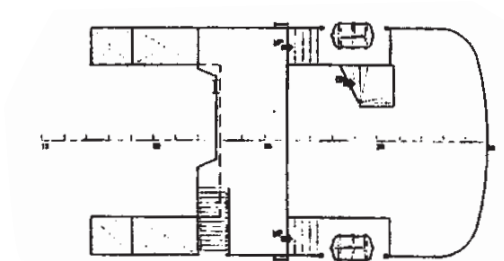
Fire pump	Remote controlled (500 m ³ /hr)
Monitor	1x located on bridge
Foam	4 m ³



Top deck



Navigation bridge deck



Lower bridge deck