

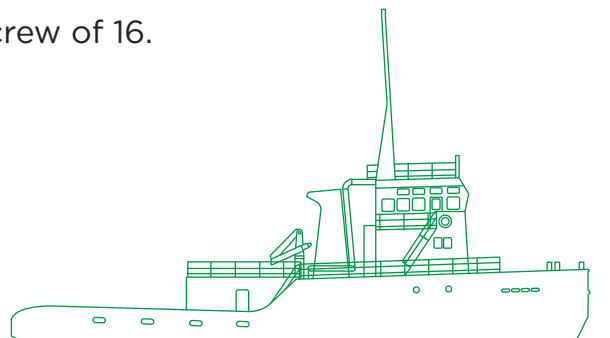


مبارك البحرية Mubarak Marine



Duma Offshore tug

At over 33 m in length, this multipurpose anchor handling, firefighting and offshore towing tug is powered by two Ulstein Bergen marine diesel engines, packs a bollard pull of over 50 tons and holds a crew of 16.



Registration

Year of build	1984
Builder	Ferguson-Ailsa Ltd
Port of registry	Dubai
Flag	UAE
Official number	5523
Call sign	A6E3096
IMO number	8317605
Class	Lloyds Register
Operator	Mubarak Marine LLC

Dimensions

Length overall	33.3 m
Breadth moulded	9.8 m
Depth moulded	4.5 m
Draft designed	3.5 m

Machinery/propulsion

Main engines	2x Ulstein Bergen 1780 kw @ 825 rpm
Control	FWD/AFT 2 station
Generator	2x Scania DN-9, 224 kw, 400v, 50hz, 1x Lister 253 kw, 100v, 50hz
Gear box	GEC, reduction ratio 2:5-1
Bow thruster	5 mt
Propulsion	Twin screw with controllable pitched, propellers with steerable KORT nozzles

Tonnage

GRT	437 t
NRT	131 t
Deadweight	203 t

Performance

Speed	14 knots
Bollard pull	50.5 t

Capacities

Fuel oil	150 t
Fresh water	52 t
Lube oil	5.2 t
Freshwater maker	5 t/day
Sewage treatment	1x Hamworthy ST2 for 30 persons
Oil water separator	1x RWO GSF0 capacity = 0.5/hr

Navigation/communication equipment

Magnetic compass	Ocean compass FW9999
Radar	1x Kodon MDC-3560
GPS	2x Kodon
HF SSB inc DSC and telex	HT-4520/HC
EPIRB	1x Mc Murdo E3
VHF (portable)	2x Sailor SP3300
VHF (fixed)	2x Sailor VHF RT4822
Inmarsat C	H2095C SAT-C, GMDSS SOLAS, area A3 GMDSS radio telex and SAT-C
Radar transponder	2x Sailor RT4822; Samyung SAR-9 (SART)
Navtex receiver	NT-900
Mini M	Telephone, fax and email
GMDSS	Sailor system 4000, area A3

Firefighting/safety equipment

Life rafts	2x 20 persons
Life buoys	6 nos
Life jackets	20 nos
Main FiFi	Engine driven diesel pump 1200 m ³ /hr
Internal FiFi	Engine driven diesel pump 35 m ³ /hr
Fire monitor	2x remote fire monitor 11700 rpm @ 10 bar
Fire extinguisher	1x mechanical foam 9 l, 2x DP for general compartment and accommodation 5 kg, 3x engine room 2 gal CO ² in, 1x switchboard 5 kg DP, 2x main floor STB 9 l, 1x main floor 10 gal
Rescue boat	6 persons 1x with 35 hp outboard engine

Fire main system with hydrants at PORT/STBD, mid ship (4 nos) quarter deck, engine room (2 nos), full sprinkling systems

Deck equipment

Crane	2x 1.5 t @ 7.5 m and 1.3 t @ 7.5 m
Towing winch	Double drum towing and anchor handling, hydraulic winch with remote control in wheelhouse
Towing wire	44 mm x 767 m
Work wire	38 mm x 300 m
Minimum breaking load	150 t
Stern roller	3 m
Towing hook	45 t
Tugger winch	10 t
CCTV	Fitted in winch room on deck

Deck space

Clear deck space

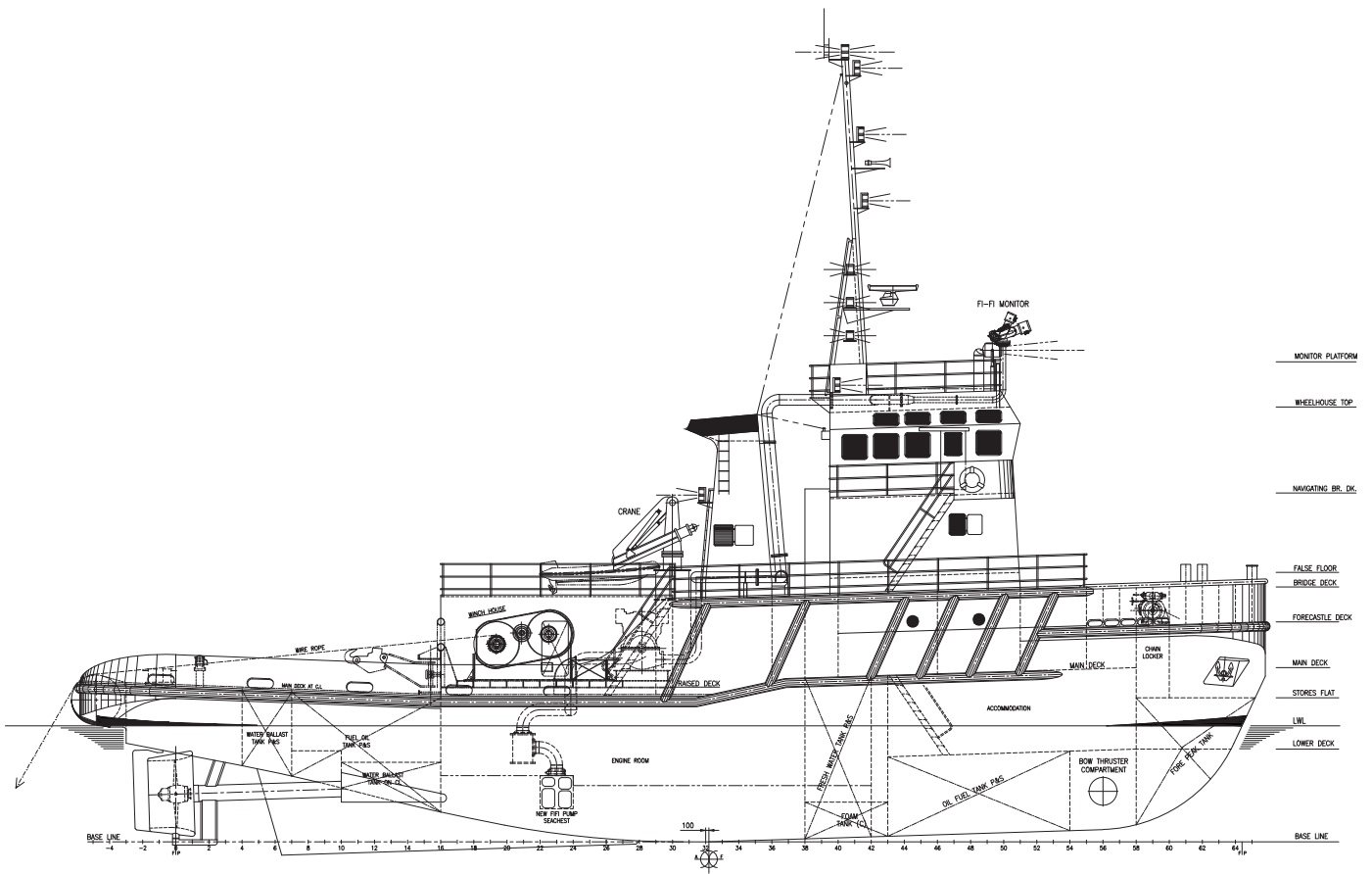
538 ft² x 215 ft²

Accommodation

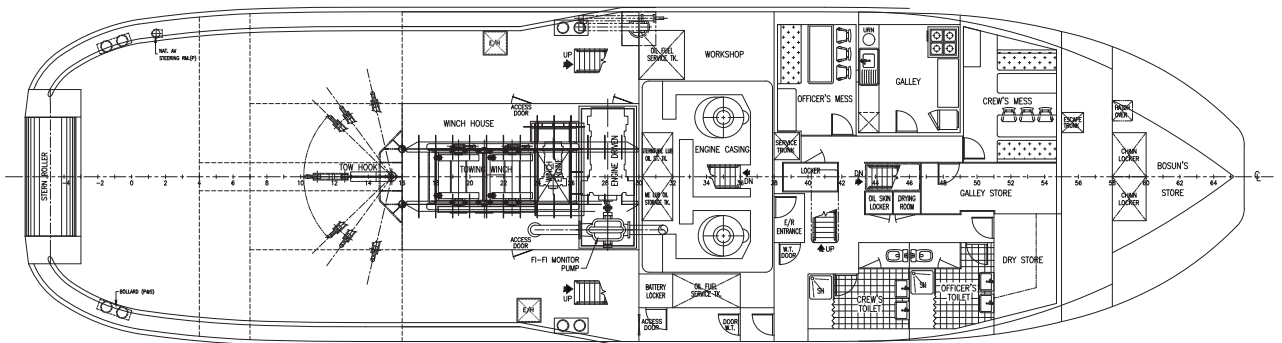
Crew	10 persons
Passengers	6 persons
Single cabin	2x 2 persons
2-person cabin	3x 6 persons
4-person cabin	2x 8 persons
Total	16 persons

MT

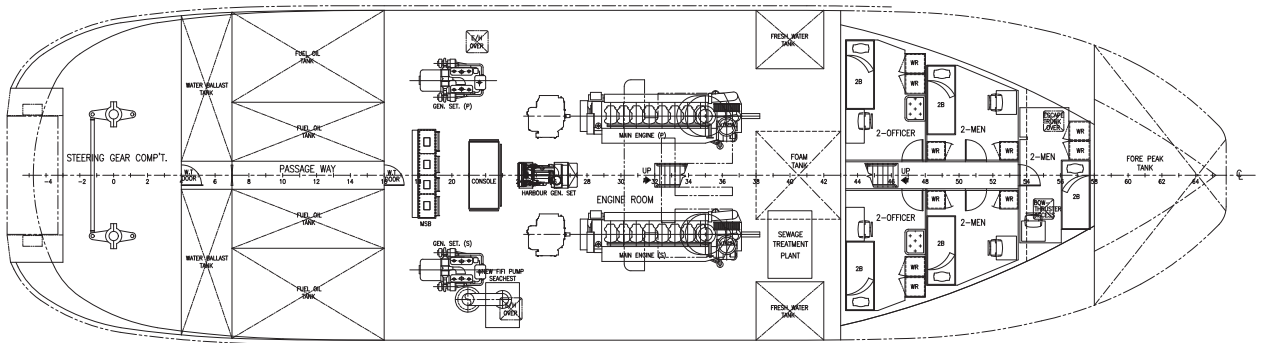




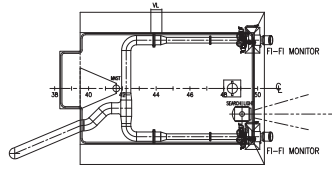
Outboard profile



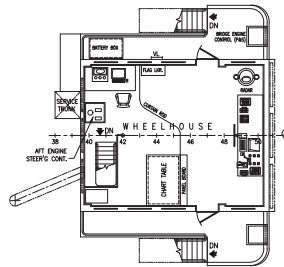
Main deck plan



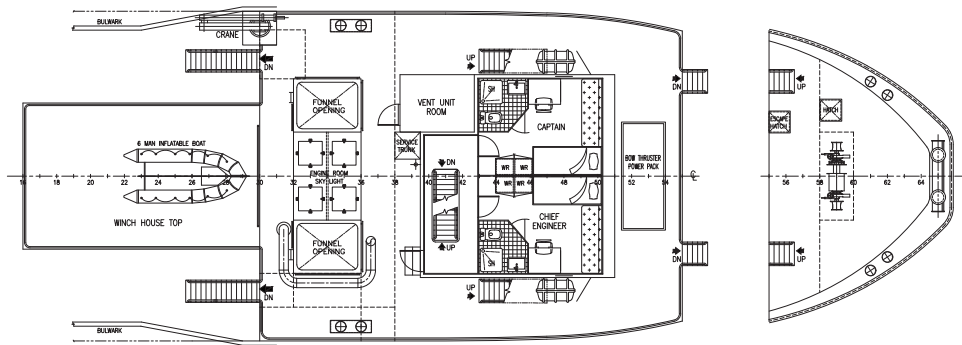
Below main deck plan



Monitor platform



Navigation bridge deck



Bridge deck plan

Forecastle deck