

Mubarak CB-04

Flat top cargo barge

A compact size cargo barge with good deck strength for transporting to and from areas where quay lengths and water depths are restricted. The barge is equipped with spuds that enable easier anchoring and handling of the barge.



Dimensions

Length Overall | 36.6 metres
Breadth Moulded | 12.2 metres
Depth-Moulded | 2.4 metres
Maximum Draft | 1.9 metres
Loaded Freeboard | 0.6 metres

Tonnage

GRT | 272 tons
NRT | 82 tons
Deadweight | 572 tons
Displacement | 736.8 tons

Clear deck area

Free Deck Space | 300 m²
Deck Strength | 10 tons/m²

Mooring system

Two Spuds (Optional) | 2 x Spud Wells on Starboard Side
Capable of mooring in up to 14 m Depth
Mooring Bollards | 7x Deck Bollards

Registration

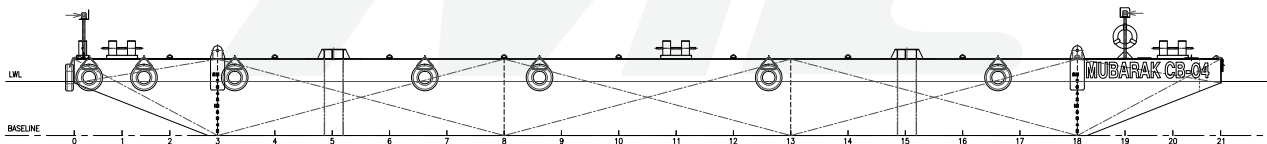
Year of Build | 2006
Builder | Kim Heng Marine, Singapore
Flag | UAE
Port of Registry | Dubai
Official Number | 0006832
Classification | Bureau Veritas
Class Number | 22057C
Owner | Mubarak Marine LLC

Optional loading ramp

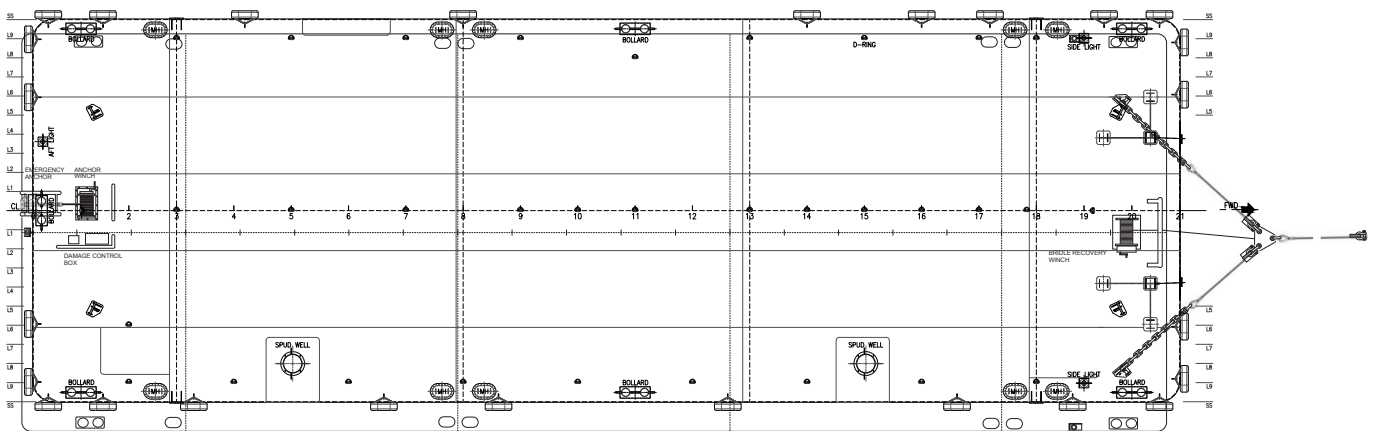
Size | 6.5 m Length x 4.3 m Width
Load Capacity | 60 tons
Capabilities | Operates to 9° Below Horizontal
Loading/Offloading Vehicles to/from Concrete Wharfs, Rocky Foreshores or Beaches

NOTE

Barge can be Fitted with Spuds, Side Walls and Additional Moorings on Request



Outboard profile



Main deck arrangement plan

Mubarak Marine LLC | PO Box 7220 | Dubai Maritime City | UAE
T+971 4 586 5200 | F +971 4 586 5299 | marketing@mubarak.ae | mubarakmarine.com