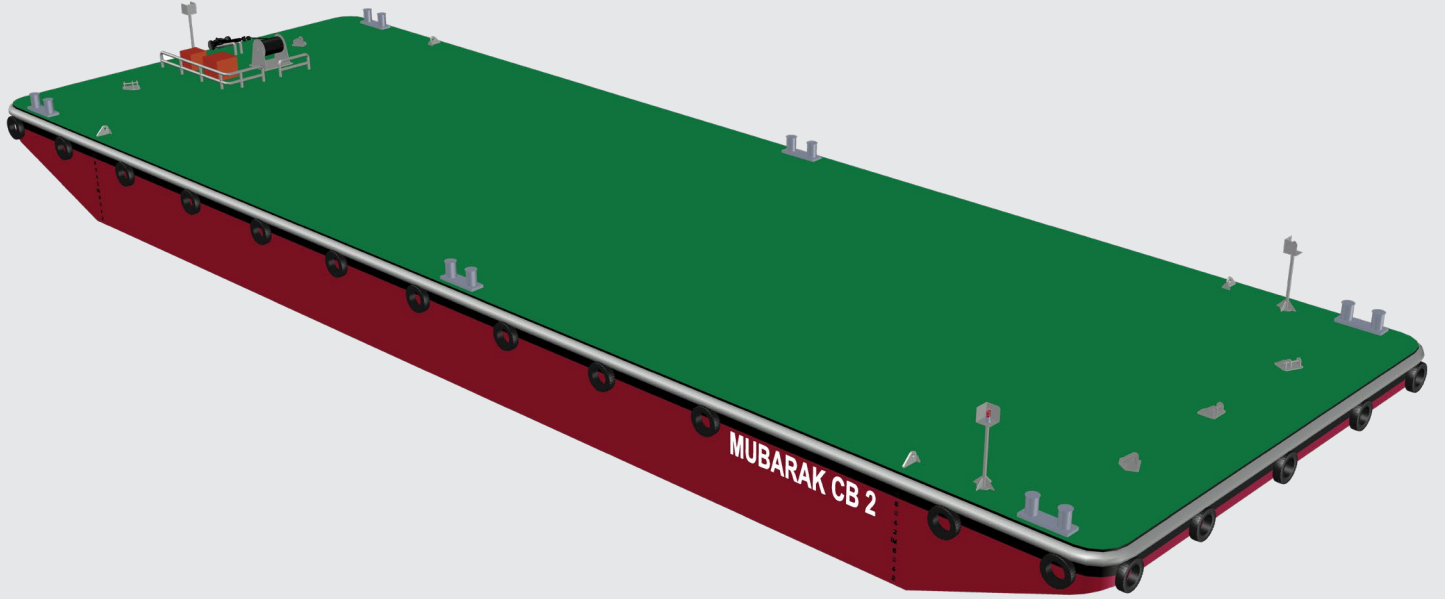




مبارك البحرية  
Mubarak Marine



## Mubarak CB 2

### Flat top cargo barge

A compact size cargo barge with good deck strength for transporting to and from areas with restricted quay lengths and water depths.



## Registration

Year of build	2008
Builder	Pt Natwell Shipyard
Flag	UAE
Port of registry	Dubai
Class number	22058D
Official number	0006830
Class	Bureau Veritas
Owner	Mubarak Marine LLC

---

## Dimensions

Length overall	36.5 m
Breadth	12.1 m
Depth	2.4 m
Max draft	1.8 m
Lightship weight	146 t

---

## Tonnage

GRT	259 t
NRT	78 t
Deadweight	621.6 t
Displacement	766.2 t

---

## Cargo capacity

Deck area	Approx. 310 m <sup>2</sup>
Deck strength	10 t/m <sup>2</sup>

---

## Safety equipment

Work vest	2 nos
Life buoys	4 nos

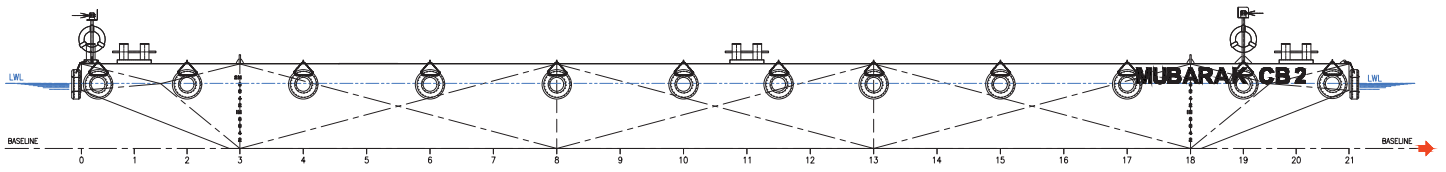
---

## Emergency anchor

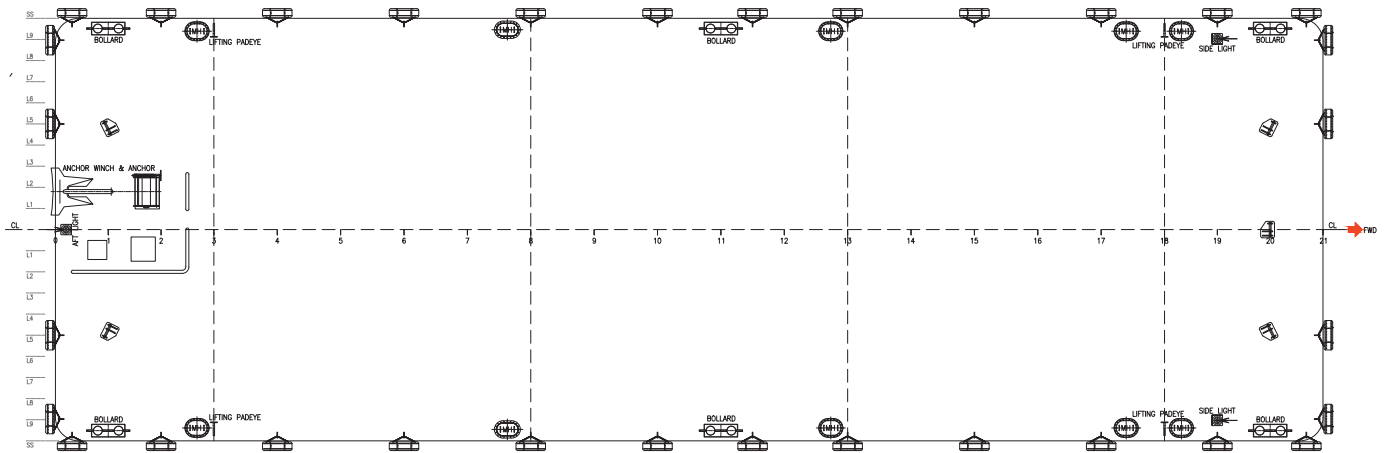
580 kg stockless hall anchor at stern with 200 m wire and recovery winch (manual)

**Note:** The Barge can be fitted with side walls, ramps and moorings by request

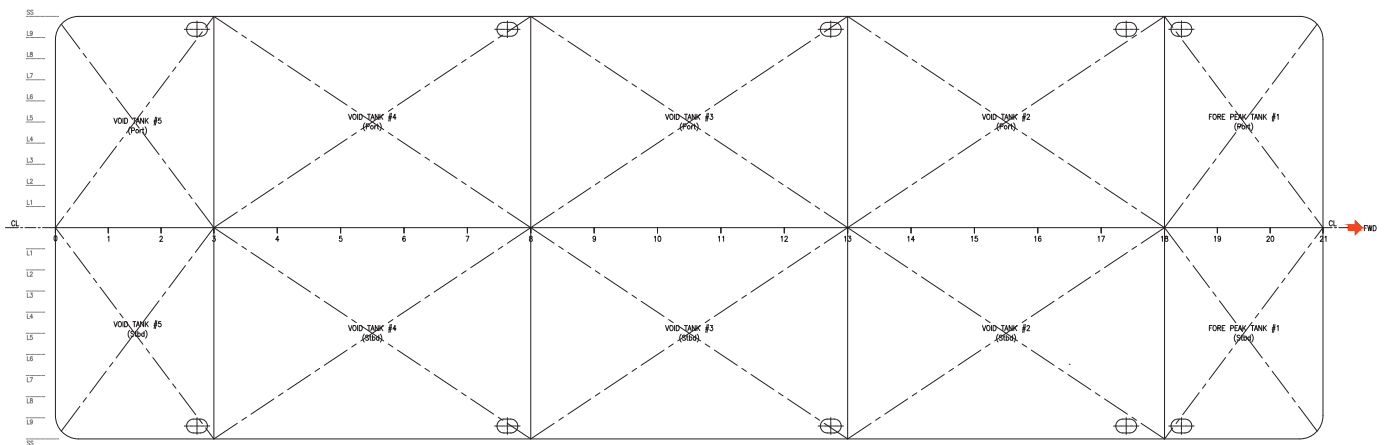
---



Outboard profile



Main deck plan



Tank plan

Mubarak Marine LLC | PO Box 7220 | Dubai Maritime City | UAE  
 T+971 4 586 5200 | F +971 4 586 5299 | marketing@mubarak.ae | mubarakmarine.com

Revision March 2023 | All technical details are provided as a guide only and are subject to owner's changes without notice