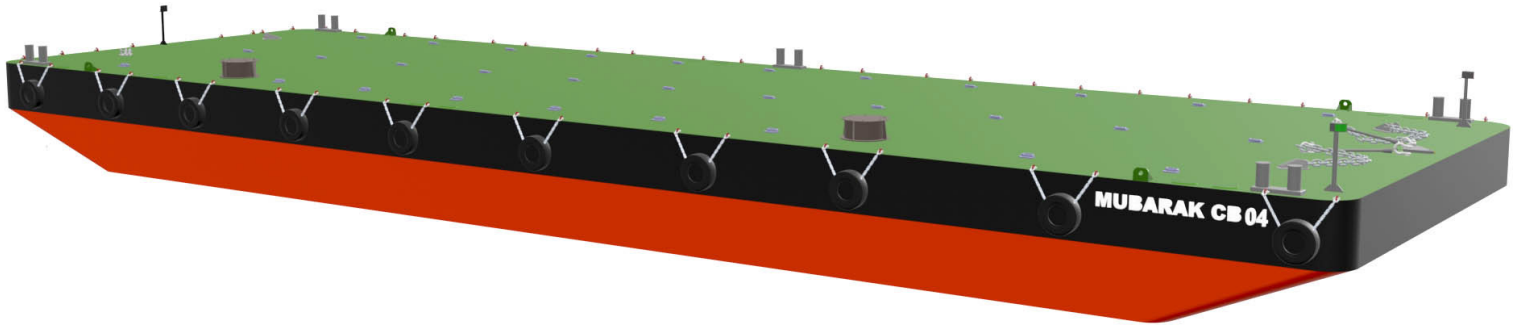




مبارك البحرية
Mubarak Marine



Mubarak CB-04 Flat top cargo barge

A compact size cargo barge with good deck strength capacity for transporting to and from areas where quay length and water depths are restricted. The barge is equipped with spuds that enable easier anchoring and handling of the barge.



Registration

Year of build	2006
Builder	Kim Heng Marine
Port of registry	Dubai
Flag	UAE
Official number	0006832
Class	Bureau Veritas
Class number	22057C
Operator	Mubarak Marine LLC

Dimensions

Length overall	36.6 m
Breadth	12.2 m
Depth	2.4 m
Maximum draft	1.9 m
Loaded freeboard	0.6 m

Tonnage

GRT	272 t
NRT	82 t
Deadweight	800 t
Displacement	964 t

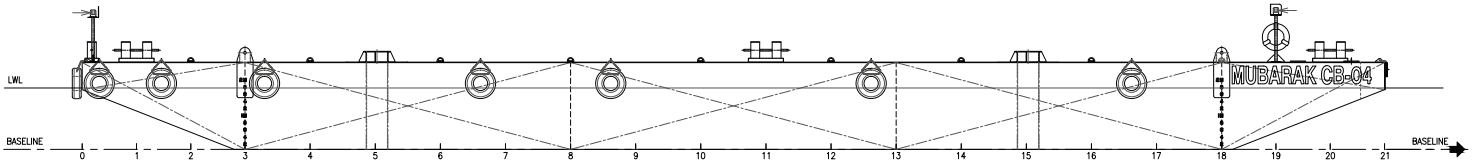
Clear deck area

Free deck space	300 m ²
Deck strength	10 t/m ²

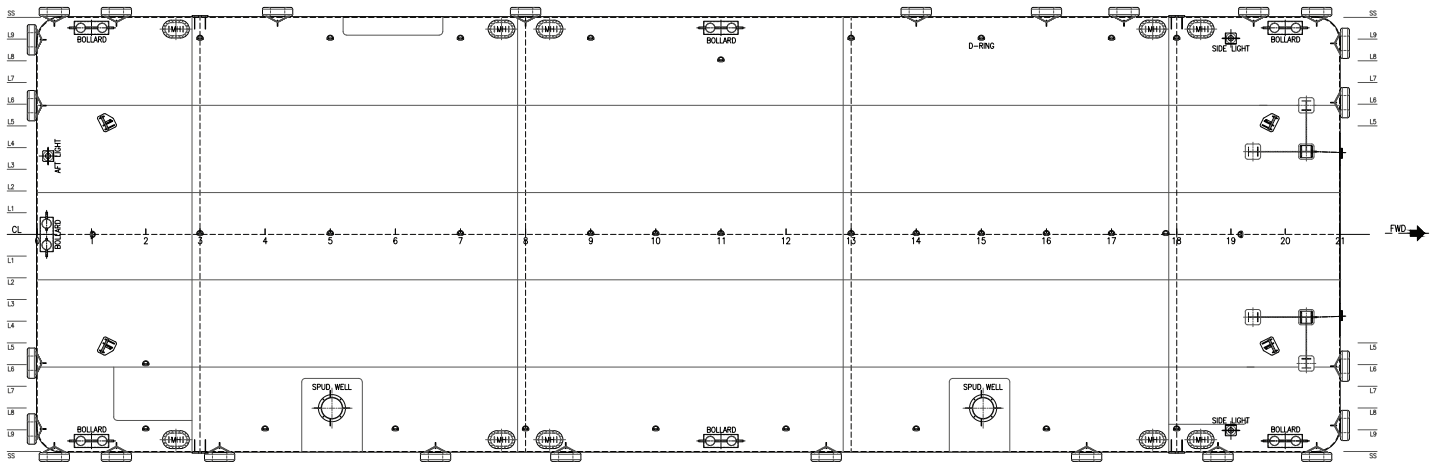
Mooring system

Spuds	2x spud wells on starboard side, capable to moor up to 14 m water depth
Mooring bollards	5x double bit deck bollards
Spud winches	2x diesel driven single drum

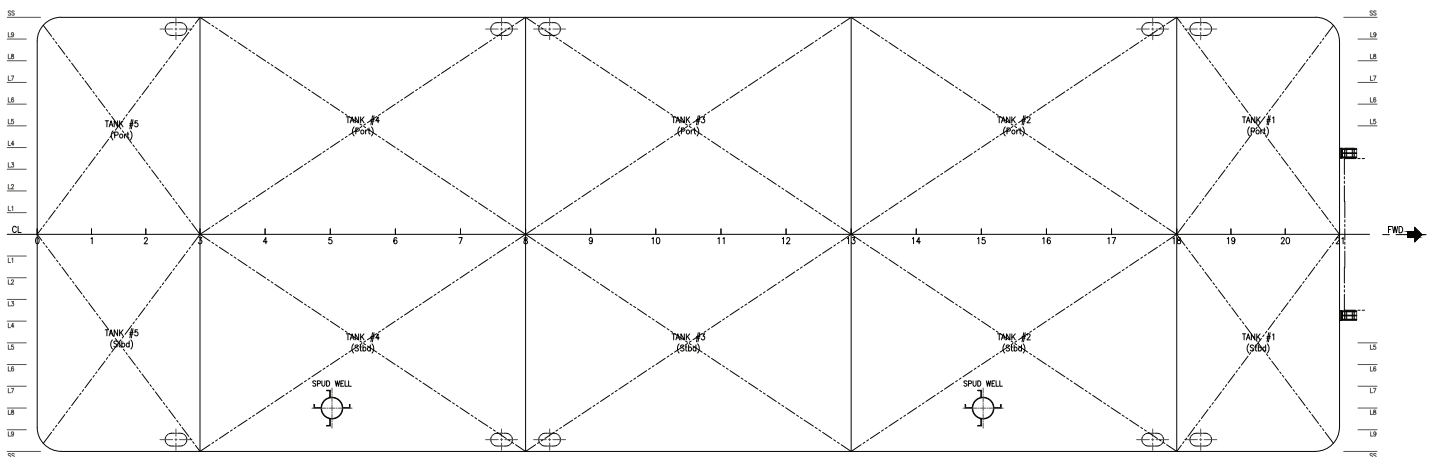
Note: Barge can be fitted with side walls & additional mooring by request



Outboard profile



Main deck plan



Tank plan

Mubarak Marine LLC | PO Box 7220 | Dubai Maritime City | UAE
 T+971 4 586 5200 | F +971 4 586 5299 | marketing@mubarak.ae | mubarakmarine.com

Revision May 2023 | All technical details are provided as a guide only and are subject to owner's changes without notice