



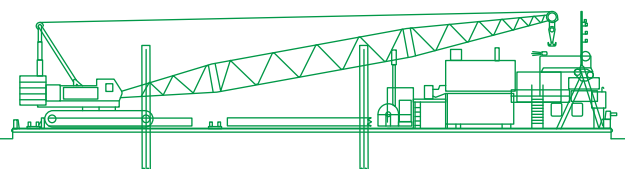
مبارك البحرية  
Mubarak Marine



## Barge Badr

### Work barge with four-point moorings

A compact 56 ton crane barge equipped with four-point moorings, onboard accommodation, and a large deck space. Two self-driven spud systems enable the barge to be anchored without the use of anchor handling tugs in suitable water depths.



## Registration

Year of build	1984
Port of registry	Dubai
Flag	UAE
Call sign	A6E2361
Official number	4869
Class	American Bureau of Shipping
Class Notation	+ A1, Barge
Owner	Mubarak Marine LLC

---

## Dimensions

Length overall	46 m
Breadth	15.5 m
Depth	3 m

---

## Deck equipment

Crawler crane	65 t Sumitomo Hydraulic Crawler Crane, SC1500 Boom 33 m
Mooring system	4-point anchor mooring
Mooring winch	2x single drum electric (steel wire rope 250 m x 25 mm) 2x double drum electric (steel wire rope 900 m x 25 mm)
Anchor	4x 2 t flipper delta
Spud	2x Ø 600 mm x 12 m, 2x Ø 600 mm x 19 m

---

## Tonnage

GRT	553 mt
NRT	165 mt
Deadweight	763.5 mt

---

## Firefighting/safety equipment

Life rafts/life jackets	4x 25 persons/33 nos
Life buoys/rescue boat	8 nos/1 no
Fire pump	1x w/76 mm x 30 m, hose and nozzle, 1x fire man outfit, 1x paranguard stretcher
Fire extinguisher/fire	4x CO <sub>2</sub> , 7x dry powder, 1x foam

---

## Communication equipment

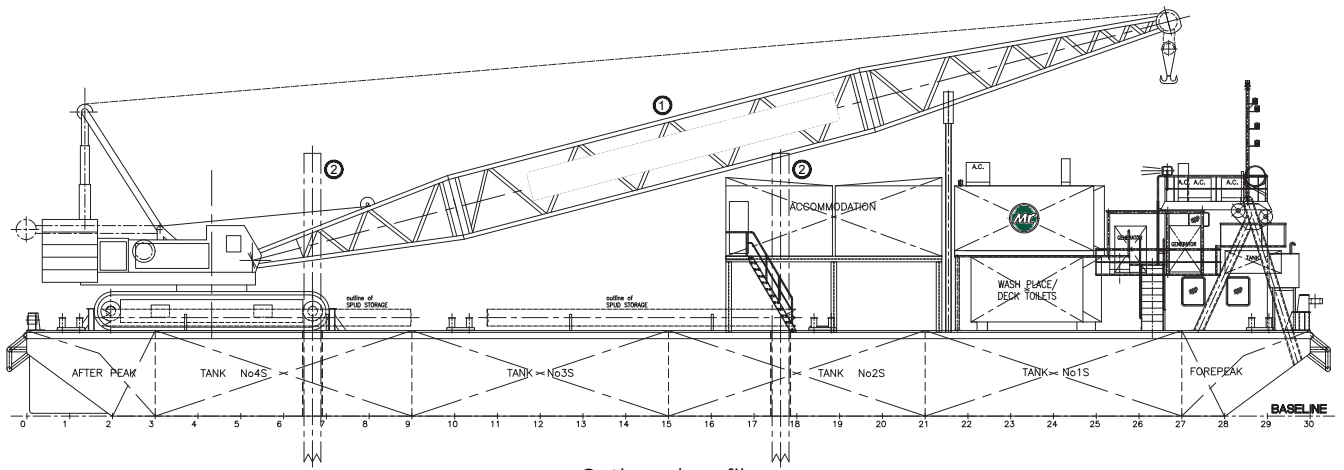
VHF	2x Quest GX125S
Handheld	5x Standard HorizonHX270S
AIX	1x CAMINO-201
SAT PHONE	1x THRANE & THRANE

---

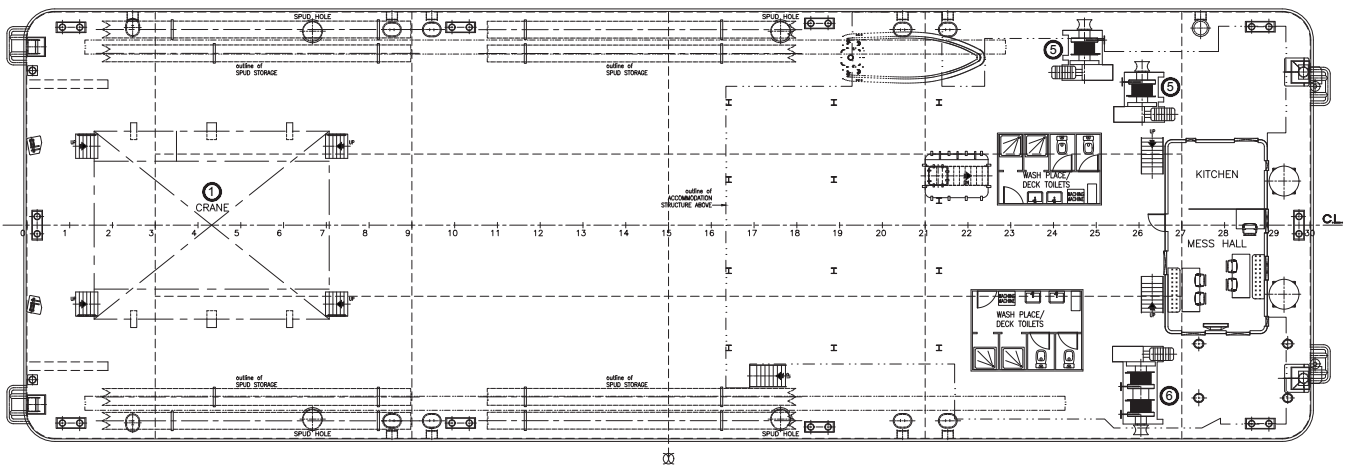
## Accommodation

Total	33 persons
-------	------------

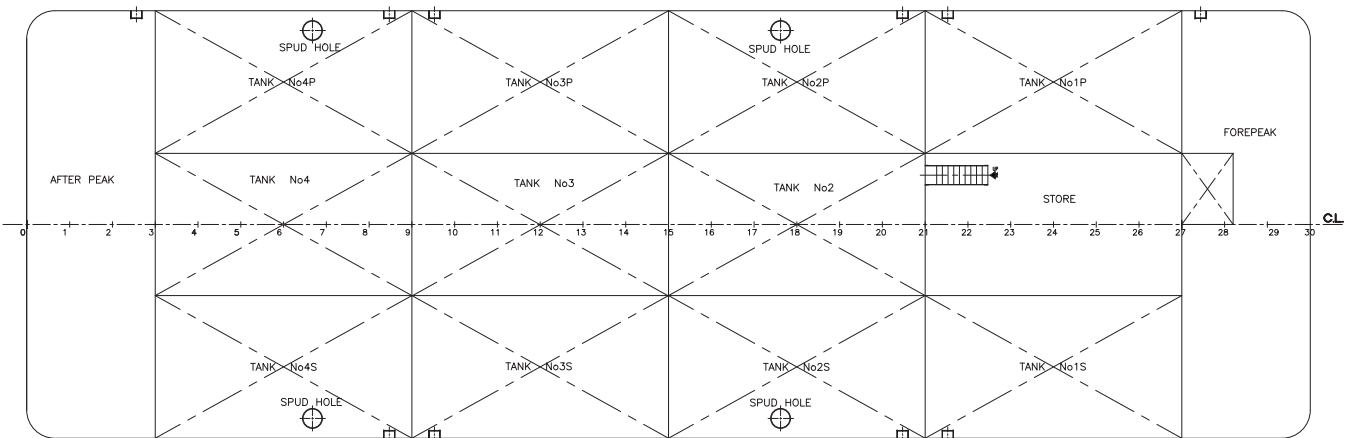
---



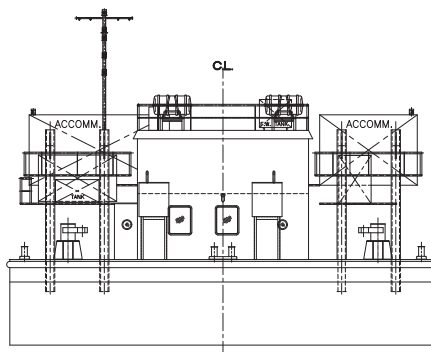
Outboard profile



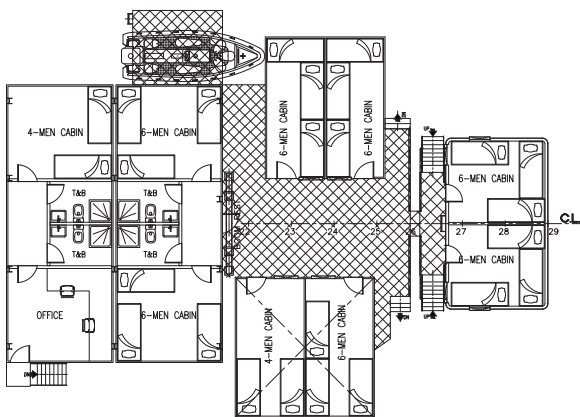
Main deck plan



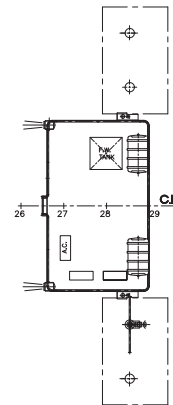
Below main deck plan



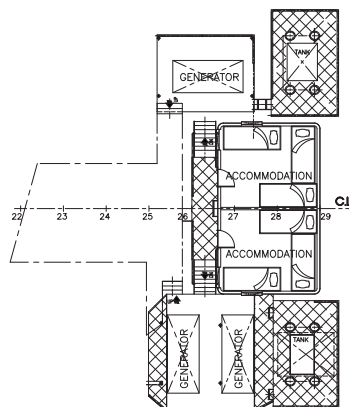
Front view (looking aft)



Accommodations level

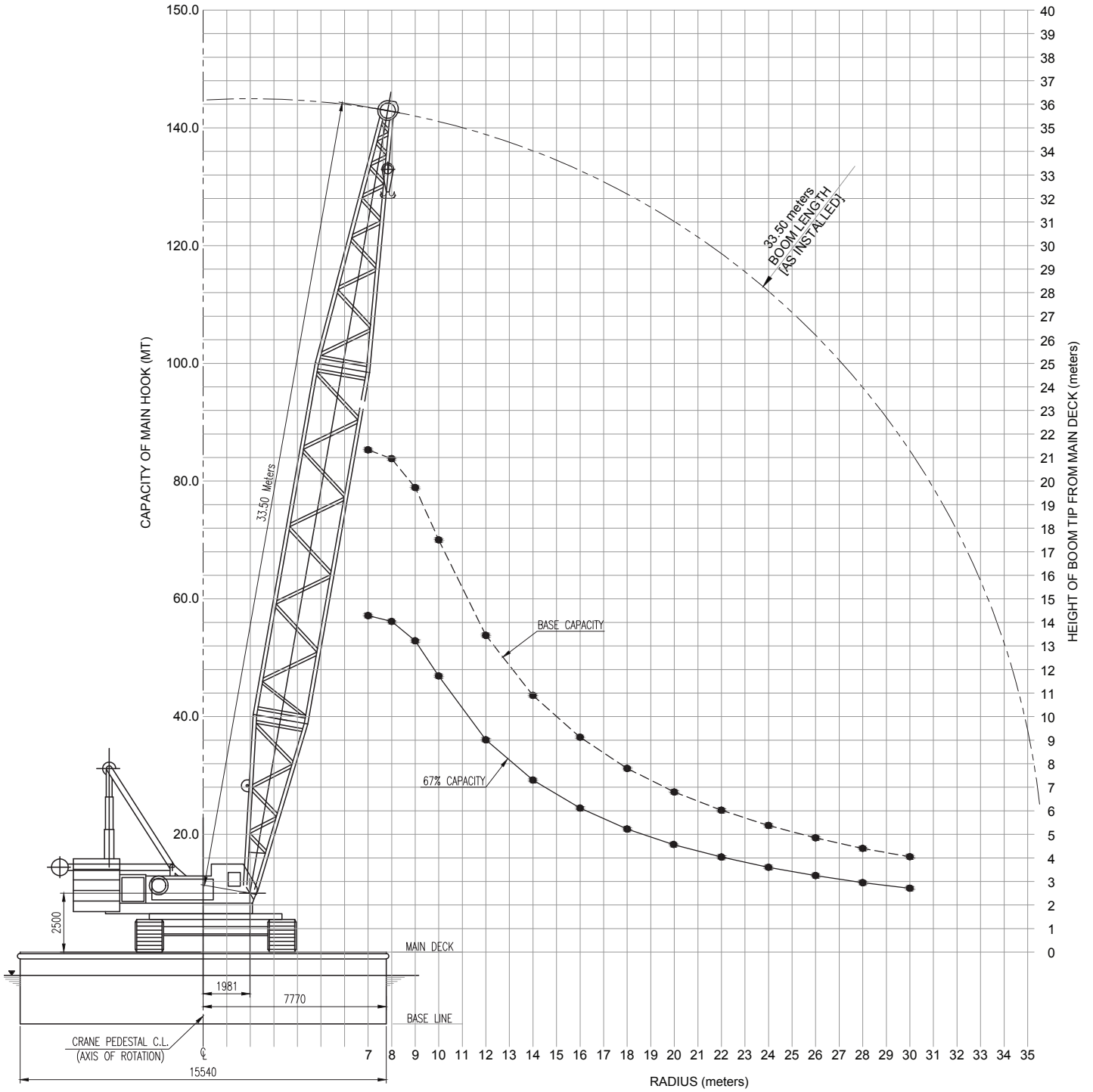


Accommodations level roof



660 from accommodations level

# Crane chart



Crane side lifting

Mubarak Marine LLC | PO Box 7220 | Dubai Maritime City | UAE  
 T+971 4 586 5200 | F +971 4 586 5299 | marketing@mubarak.ae | mubarakmarine.com