

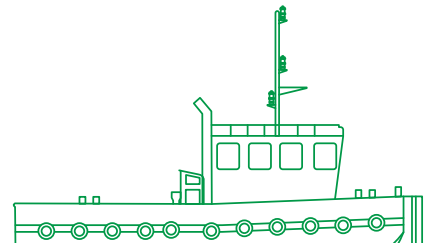


مبارك البحرية  
Mubarak Marine



## Adam Harbour tug

At just over 16 m in length, this highly manoeuvrable multipurpose utility supply, crew transport, and harbour tug packs a bollard pull of 9 tons, powered by two 480 bhp marine diesel engines, and has accommodation for a crew of 4 people.



## Registration

Year of build	2012
Builder	Dubai Ship Building & Engineering LLC
Port of registry	Dubai
Flag	UAE
Class	Bureau Veritas
Operator	Mubarak Marine LLC

---

## Dimensions

Length overall	16.4 m
Breadth overall	5.0 m
Depth moulded	2.25 m
Draft	1.6 m

---

## Machinery/propulsion

Main engines	2x Doosan marine engines 353 kW /480bhp @ 1800 RPM
Gear box	2x ratio 4.48:1 model DMT 170HL
Generators	2x Perkins / Stanford 24 kW
Propeller	2x Fixed pitch propellers, dia 42inch (1067mm)

---

## Tonnage

GRT	41 t
-----	------

---

## Performance

Cruising speed	9.0 knots
Bollard pull	9.0 mt

---

## Accommodation

Total	4 persons
-------	-----------

---

## Firefighting/safety equipment

Life rafts	1x 6 persons
Life jackets/life buoys	6 nos/4 nos
Fire extinguishers	3 nos

---

## Navigation/communication equipment

Magnetic compass	Mx 575 B DGPS
Radar	1x
Radar transponder	1x
VHF (fixed)	Samyung
VHF (portable)	ICOM, IC-M-88

---

## Deck equipment

Towing hook	Disk type
Release hook	1x 10t SWL
Stern roller	1 m available
Windlass	1x 1.1 mt

## Additional towing arrangement

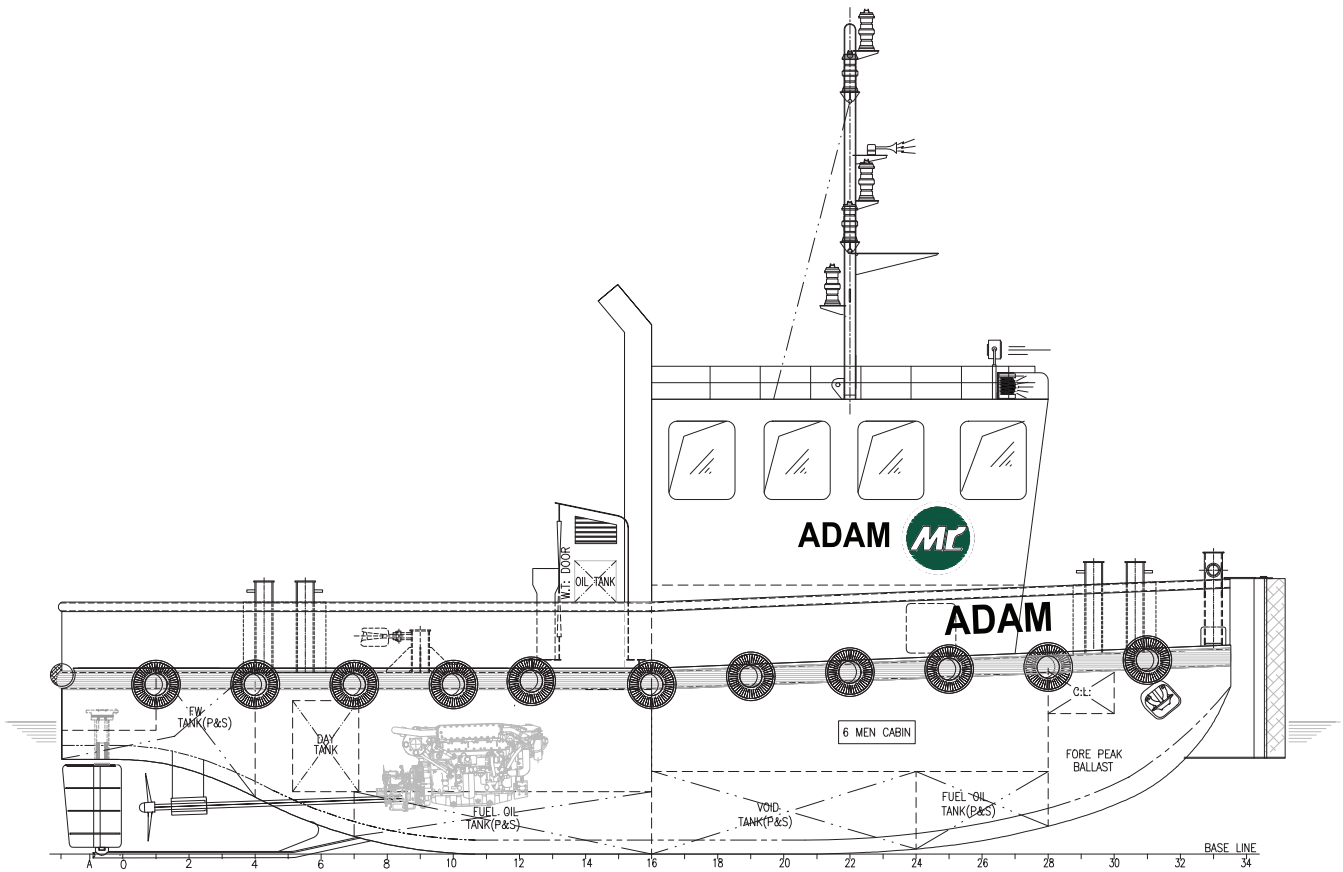
Towing gear	Available
Hydraulic crane	1.5 t

---

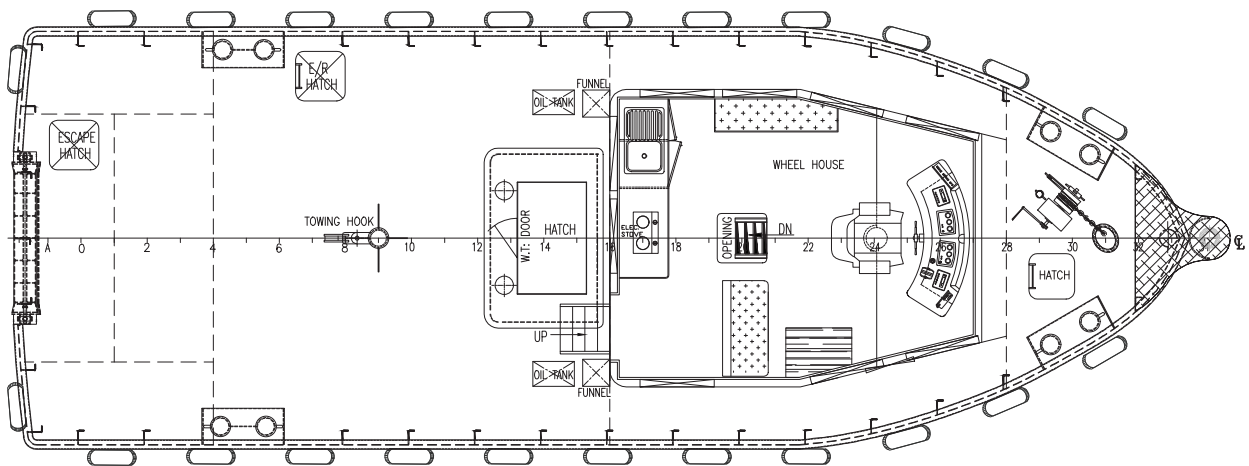
## Capacities

Fuel oil	6 mt
Fresh water	4 mt
Deck space	5 sq/m

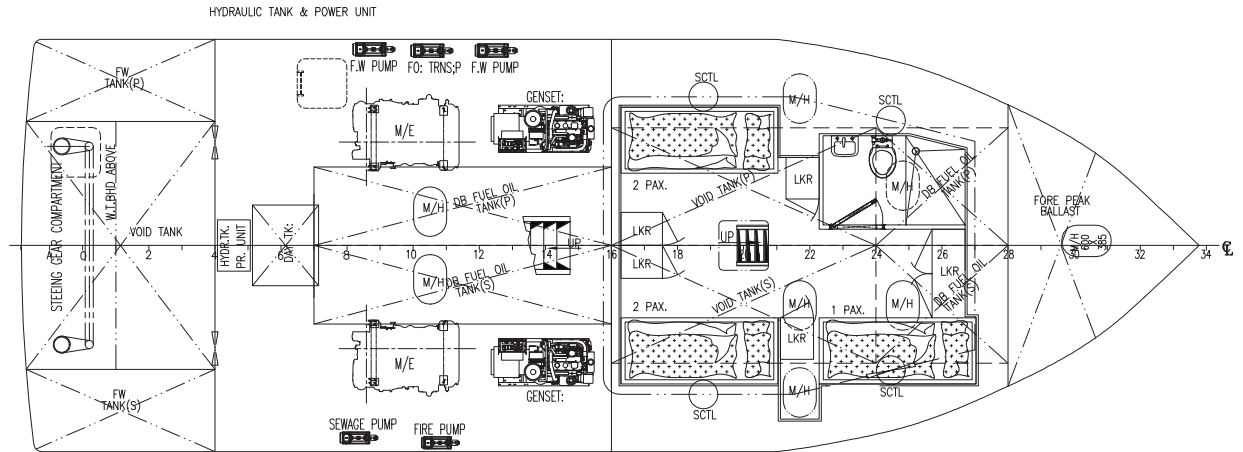




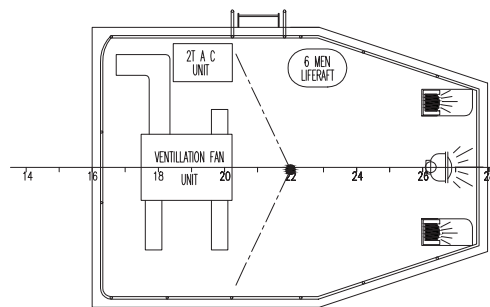
Outboard profile



Main deck plan



Below main deck plan



Wheelhouse top