

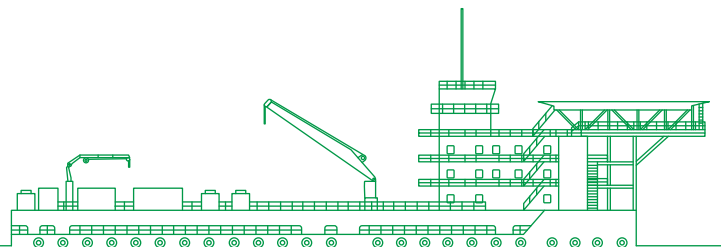


مبارك البحرية
Mubarak Marine



Mubarak Supporter Multipurpose DP2 work barge

At 77 m in length, this modern multipurpose DP2 work barge has an 8-point mooring system plus 22 m spuds. It can accommodate 182 people in safety and comfort, complete with an 80 ton main crane, a second 12 ton hydraulic crane, workshops, medical facilities, and a helideck.



Registration

Year of build	2014
Builder	Dubai Shipbuilding & Engineering
Port of registry	Dubai
Flag	UAE
Official number	0007428
Call sign	A6E2185
IMO number	8537229
Class	Bureau Veritas
Class number	28017F
Class notation	HULL, MACH, AUT_UMS, DYNAPOS AM/AT R HEL/ALM special service/utility-construction vessel, tropical zone
Coast guard number	DC 411
Operator	Mubarak Marine LLC

Dimensions

Length overall	77 m
Length (thruster appendages)	91.5 m
Breadth moulded	30 m
Depth moulded	5.5 m
Minimum draft	2.6 m (with 15 days consumables)
Maximum draft	4.1 m

Machinery/propulsion

Main engines	3x 1171 kw, 2x 879 kw = 5271 kw
Emergency/harbour generator	1x 433 kw
Switch boards	Terasaki
Power management	Praxis
Electrical accessories	Terasaki
Oily water separator	1x 1 m ³ /h, 15 ppm
Fresh water maker	3x 30 t/day = 90 t/day production
Sewage treatment plant	1x ACO Manipur AM200, 1x ACO Manipur AM50, Germany membrane type with UV sterilization system in the effluent discharge
Propulsion	4x Verhaar Omega channel thrusters, thruster model 31140, 550 kw @ 1800 rpm each, 4x HRP deck mounted Azimuth thrusters diesel, engine driven, model HRP4111 each rated 525 kw each @ 1800 rpm
Dynamic positioning	DP2, model MT bridge mate with independent joystick
Reference system	DGPS 1-Veripos/LD5, DGPS 2-Veripos/LD5, laser-guidance navigation cyscan, acoustic-sonardyne, taut wire-forum energy technologies (MT), microwave-radius 700

Tonnage

GRT	5251 t
NRT	1575 t
Deadweight	5520 t
Displacement	9315 t

Navigation/communication equipment

Wind indicator	2x Walker & Company 2020
Radar	2x Sperry (X-Band and S-Band with ECDIS chart plotter built in)
Echo sounder	1x Koden
GPS	3x Leica navigation system MX420
Gyrocompass	3x Yokogawa
VHF (portable)	6x Standard horizon HX370S
Satellite phone	1x INMARSAT fax, 1x Thuraya satellite phone
Satellite TV	1x Seatel
SSB radio	1x JRC JSB-196
PABX phone	1x NEC exchange, covering all cabins

Deck equipment

Mooring winches	8x 40 t line pull, 100 t break holding power 1000 m of 42 mm diameter wire model NCW-SD-40-100H, Nor crane equipped with load monitoring system on bridge
Spud winches	2x 30 t pull, electric winches 100 m of 32 mm diameter wire, model NCW-MW-SD-30-70-E, Nor crane
Spud legs	1200 mm Ø x 22 m length
Main crane	1x pedestal mounted Manitowoc crane, model 2250 series 1, load tested to 81.2 t @ 11 m radius
Auxiliary crane	1x electro hydraulic crane 12 t @ 8 m and 5 t @ 16 m
Anchors	8x delta flippers of 7 t each
Helideck	Designed for Bell 412 and 212 for helicopters with D" value up to 22.2 m

Capacities

Fuel oil	577 m ³
Fuel oil transfer P/P	2x 30 m ³ cap @ 56 m WC
Fresh water	2229 m ³
Fresh water transfer P/P	1x 45 m ³ /hr cap @ 49 m WC
Ballast fresh water	2010 m ³
Freezer room	52.3 m ³
Chiller room	71.3 m ³
AC unit	2x 133 t = 266 t cooling capacity with chilled water system and independent room temperature control

Clear deck area

Work deck area	1150 m ²
Deck strength	10 t/m ²

Workshop facility

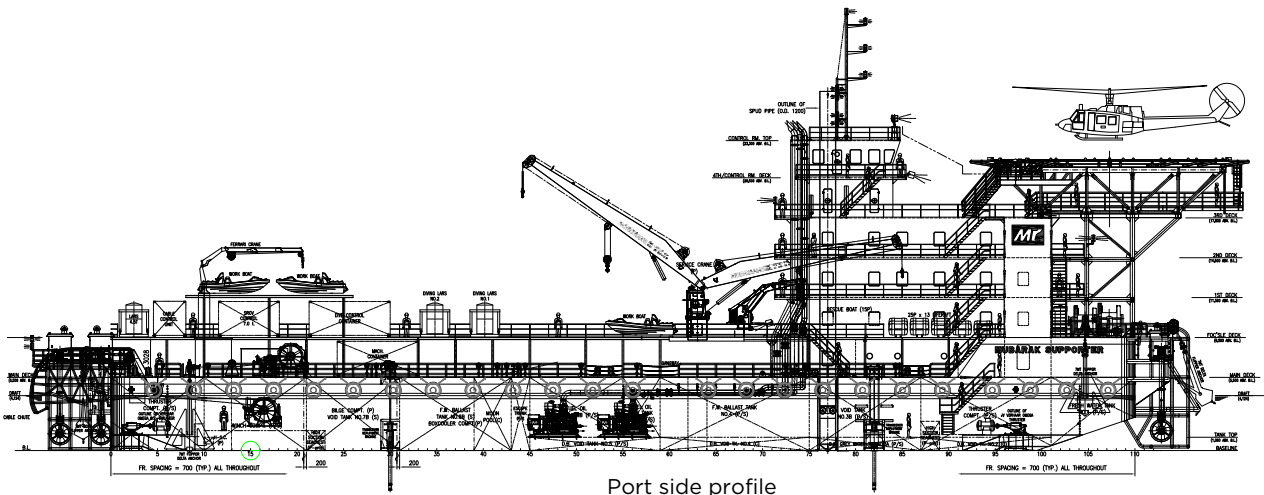
Equipped with lathe drilling and grinding machines

Firefighting/safety equipment

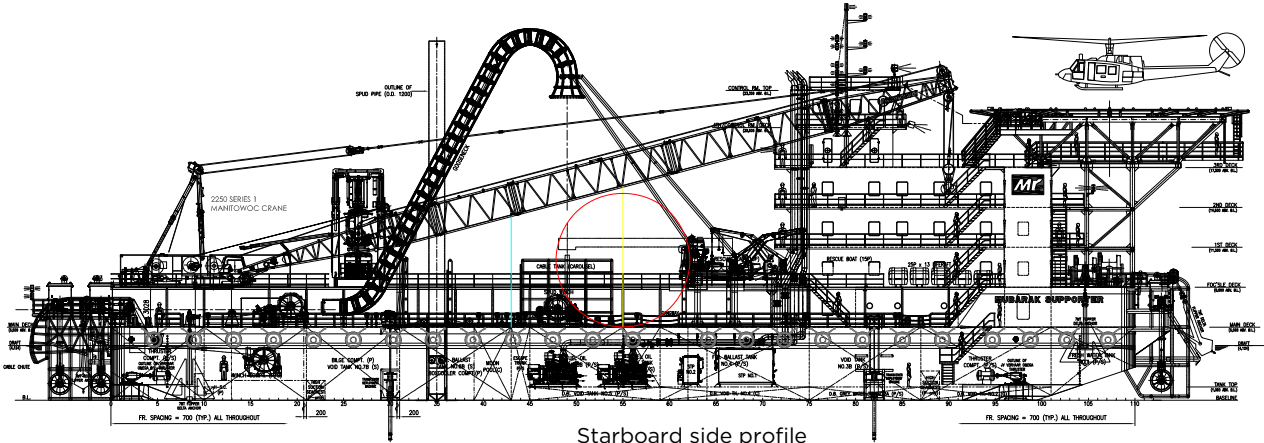
Life rafts	26x 25 persons = 650 persons
Life buoys	12x with smoke signals, 20x fitted with 30 m lifelines = 32 nos
Life jackets	350 nos
Rescue boat	2x 18 persons with jet propulsion diesel driven, launchable with a slewing davit
Fixed breathing air System (for 60 mins)	80 nos Cascade system
Fire pump	2 nos and 1 no (emergency)
Fire detection	Smoke and heat detection system
Sprinkler system	Covering all areas of accommodation
Gas detection	H2S and LEL detection
Mist system	Covering all machinery spaces
Fixed CO ₂ system	For engine room
Barge is built in conformity to SOLAS existing regulations	

Accommodation

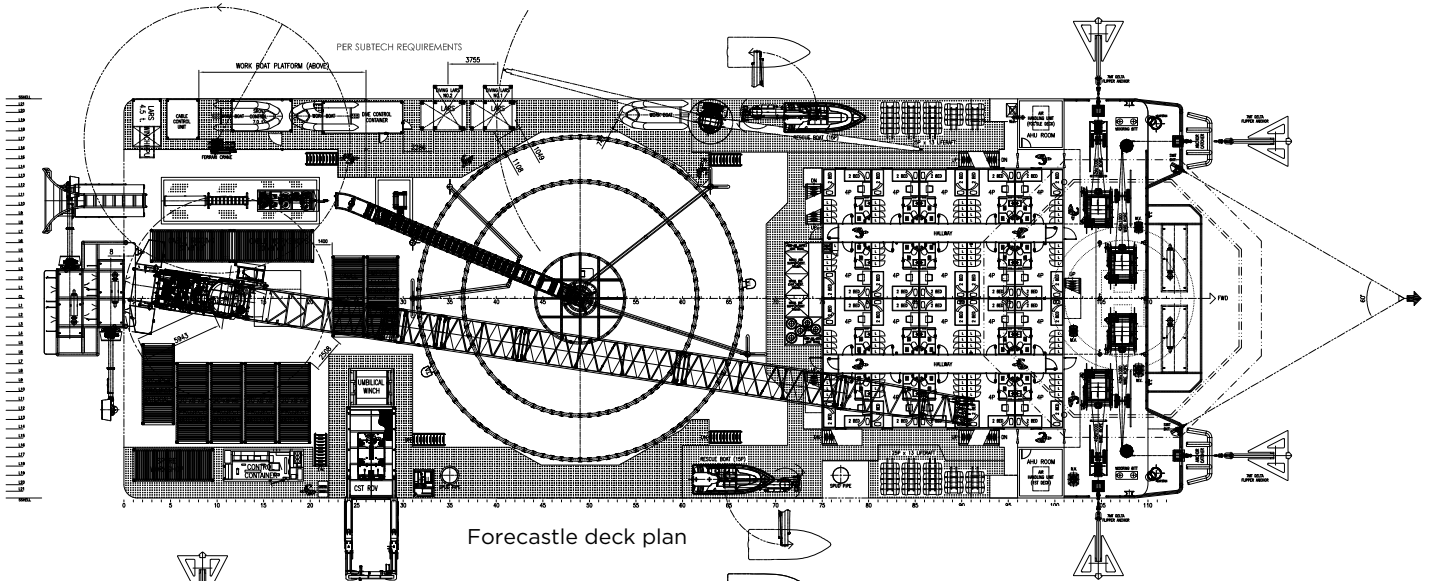
1-person berth cabin	2x with attached toilet and bath
2-person berth cabin	26x with attached toilet and bath
4-person berth cabin	32x with attached toilet and bath
Client/officer's office	1x on 3rd Deck
Officer's meeting room	1x on 2nd Deck
Officer 's lounge	1x on 2nd Deck
Prayer room	1x on tank top
Mess room	1x on main deck, 100 nos seating
Galley	1x on main deck, fully equipped with dry storage and refrigerator storage
Clinic	1x double berth with attached toilet and bath on main deck
Recreation/TV room	1x fully equipped
Library	1x fully equipped
Gymnasium	1x fully equipped
Game room	Table tennis and pool
Laundry room	Fully equipped with washers and dryers
Change Room	1x on main deck and 1x on top tank deck
Combined toilet	1x on main deck, 1x on top tank and 1x on 3rd deck
Total	182 persons



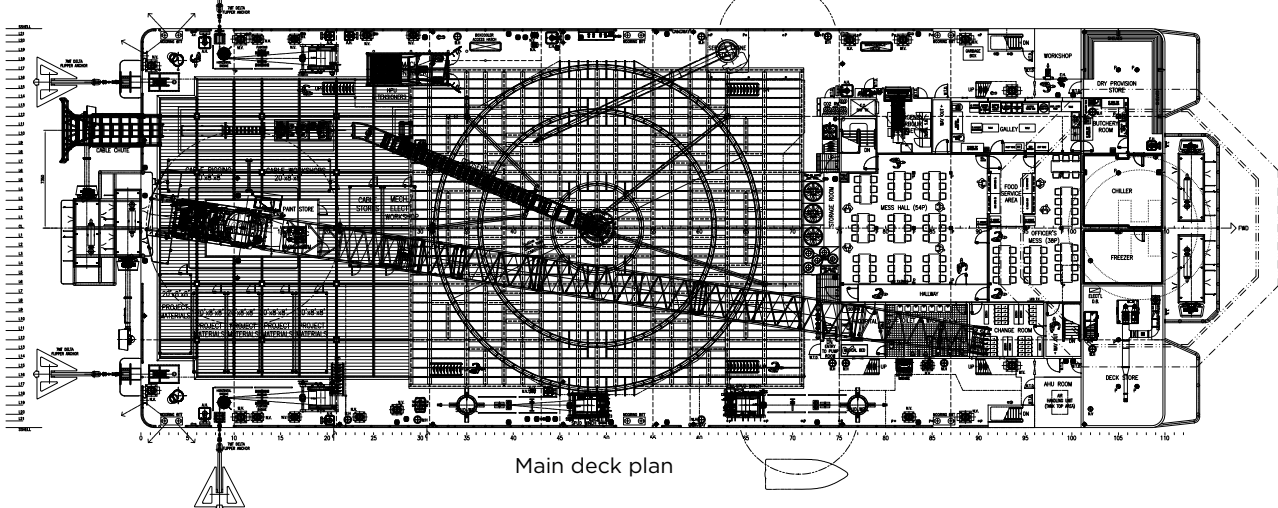
Port side profile



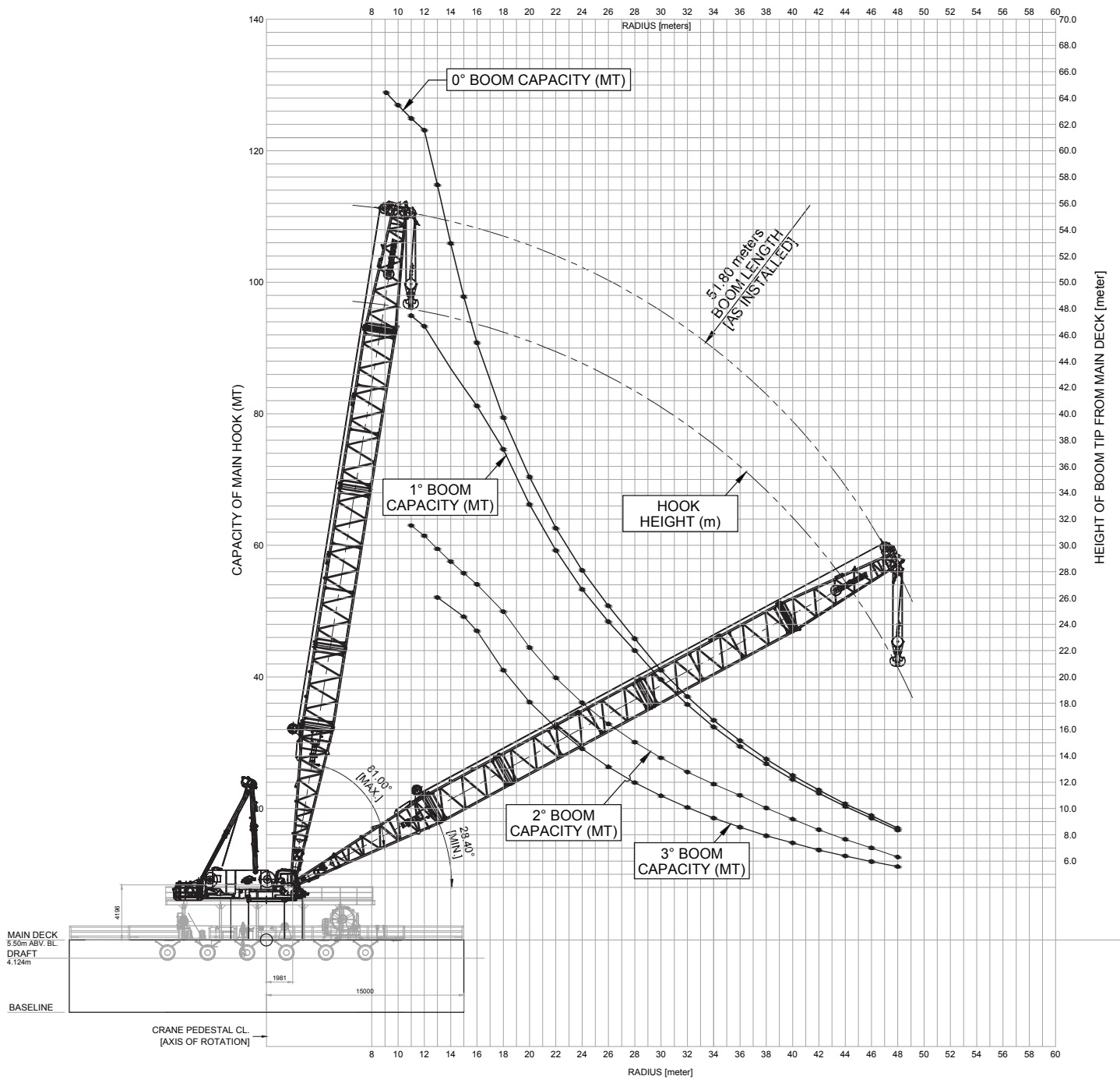
Starboard side profile



Forecastle deck plan



Main deck plan



Crane side lifting

Mubarak Marine LLC | PO Box 7220 | Dubai Maritime City | UAE
 T+971 4 586 5200 | F +971 4 586 5299 | marketing@mubarak.ae | mubarakmarine.com

Revision May 2023 | All technical details are provided as a guide only and are subject to owner's changes without notice