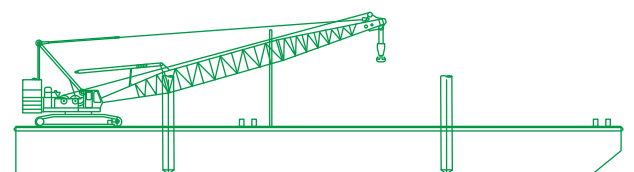




MUBARAK HORIZON FLAT TOP BARGE

A 62 metre, wide body barge providing good stability and deck space, with two self-driven spud systems that enable the barge to be anchored without anchor handling tug assistance, in water depths allowing use of the spuds.



DIMENSIONS

Length Overall | 62.2 metres
Breadth Moulded | 27.4 metres
Depth Moulded | 4.8 metres
Draft Summer | 3.9 metres

TONNAGE

GRT | 2,250 tons
NRT | 675 tons
Deadweight | 5,785 tons

CARGO CAPACITY

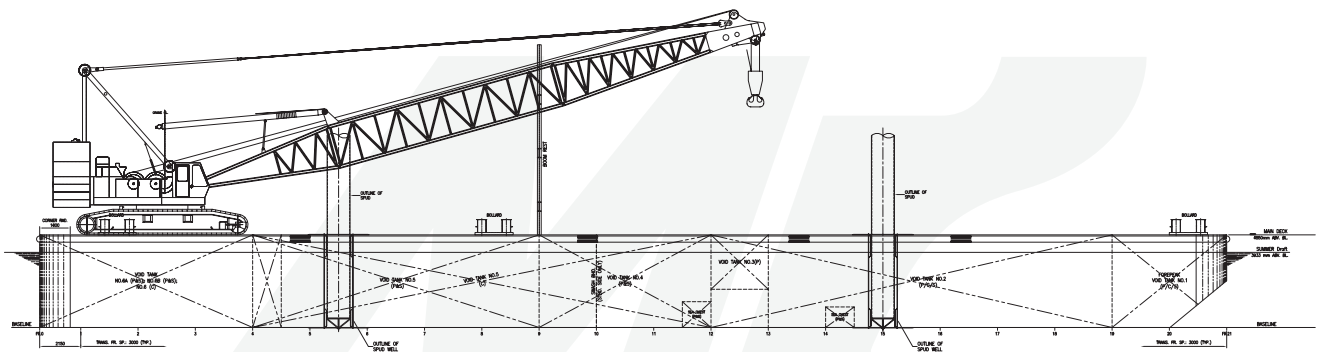
Deck Strength | 10 tons/m²

REGISTRATION

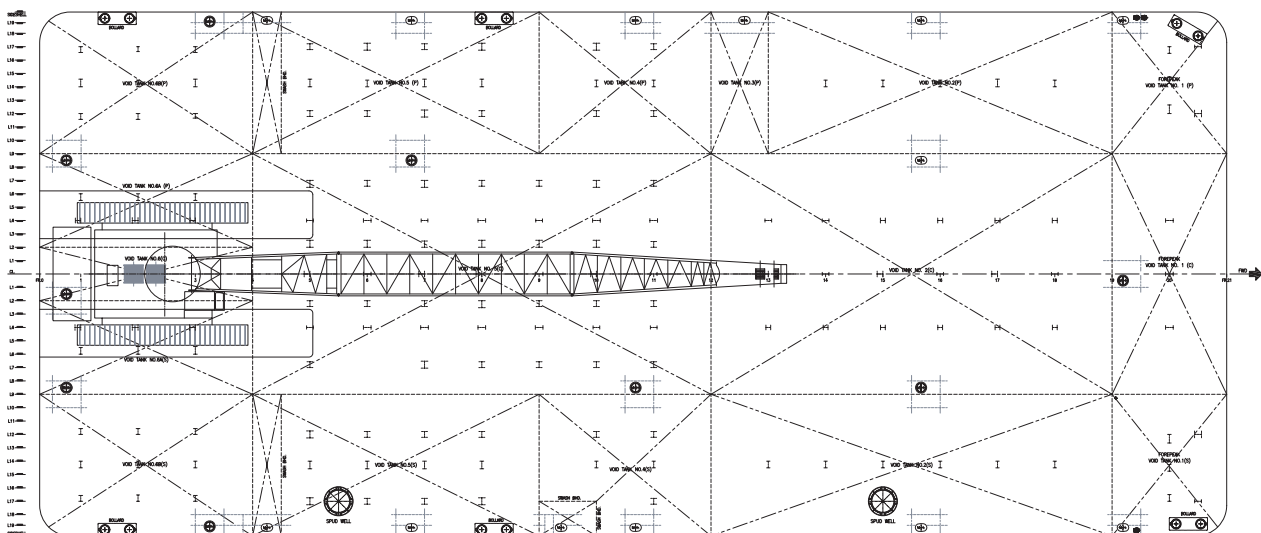
Year of Build | 2009
Builder | Dubai Ship Building and Engineering
Flag | UAE
Port of Registry | Dubai
Official No | 0007802
Classification | Tasneef
Class Number | 0043
Owner | Mubarak Marine LLC

SPUDS

2x Spuds of 1.6 m Diameter and 26 m Length
Self-lifting by Diesel Driven Winch



OUTBOARD PROFILE



MAIN DECK ARRANGEMENT PLAN

Mubarak Marine LLC | PO Box 7220 | Dubai Maritime City | UAE
T+971 4 586 5200 | F +971 4 586 5299 | marketing@mubarak.ae | mubarakmarine.com