



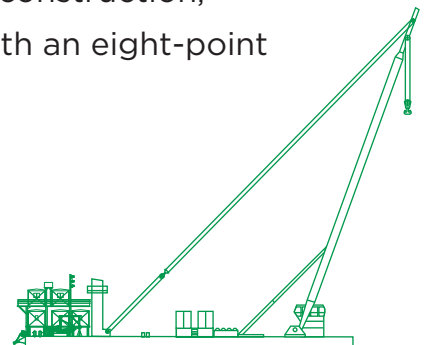
مبارك البحرية
Mubarak Marine



Al Amlaq

Non-propelled sheerleg crane barge

A deep-sea sheerleg crane barge with a capacity of up to 400 tons, ideal for specialised heavy lift operations in marine contracting, offshore construction, heavy cargo shipping, and marine salvage. The barge is fitted with an eight-point mooring system, giving her high manoeuvrability and accuracy.



Registration

Year of build	1983
Builder	Pontoon Shipyard, Netherlands and Liesbosch B.V. Netherlands
Port of registry	Dubai
Flag	UAE
BV register number	10894T
Call sign	A6E2583
Official number	5748
Class	Bureau Veritas
Type	1 hull pontoon-crane unrestricted navigation
Owner	Mubarak Marine LLC

Dimensions

Length overall	60 m
Breadth	22 m
Moulded depth	4 m
Summer draught	2.4 m
Maximum height	65 m

Generators

Main generator	2x deutz diesel F8L413, 100 Kva each
Harbour	1x deutz diesel F3L912W, 35 Kva

Tonnage

GRT	1480 t
NRT	444 t
Deadweight	4198 mt
Lightweight	1368 mt

Accommodation

Barge crew	1x 1 bed, 1x 6 beds
Charterers personnel	3x 2 beds, 5x 4 beds, 1x 6 beds
Total	39 beds

Hoisting equipment

Main hoists	2x 200 mt SWL
Auxiliary hosts	1x 30 mt SWL, 1x 15 mt SWL
Max capacity	400 mt at radius of 10 m
Max operating radius	150 mt at radius of 30 m
Max lifting height	50 m above sea level
Proof load test	440 mt
Load indicators	Wylie Instruments fitted in control cabin

Operating controls

All four hoists operate independently

Controls fitted in control cabin

Bunkers

Fuel capacity	8500 USG
Fresh water capacities	60700 USG

Hydraulic power units

Engine	2x deutz FI 2L 413F, 2x 287 BHP;2150 RPM, driving 2Lohman stolterfht splitter, gearbox fitted by hydromatic, hydraulic pumps
--------	--

Mooring equipment

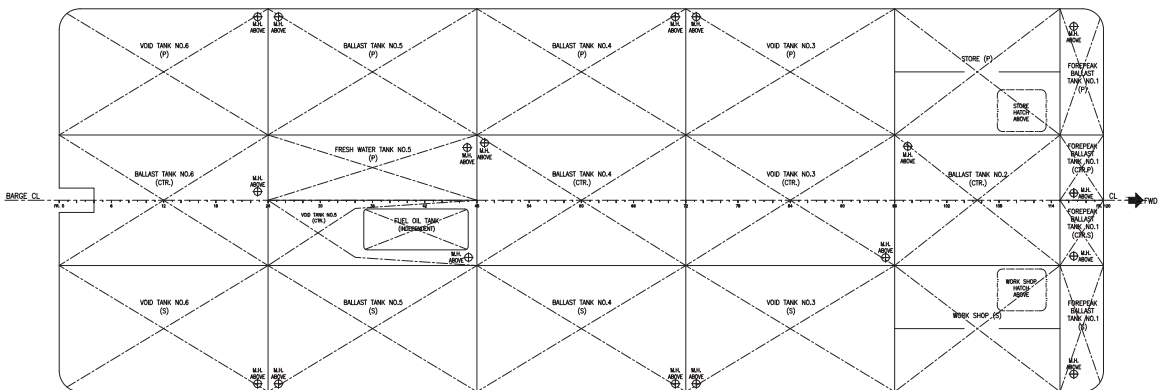
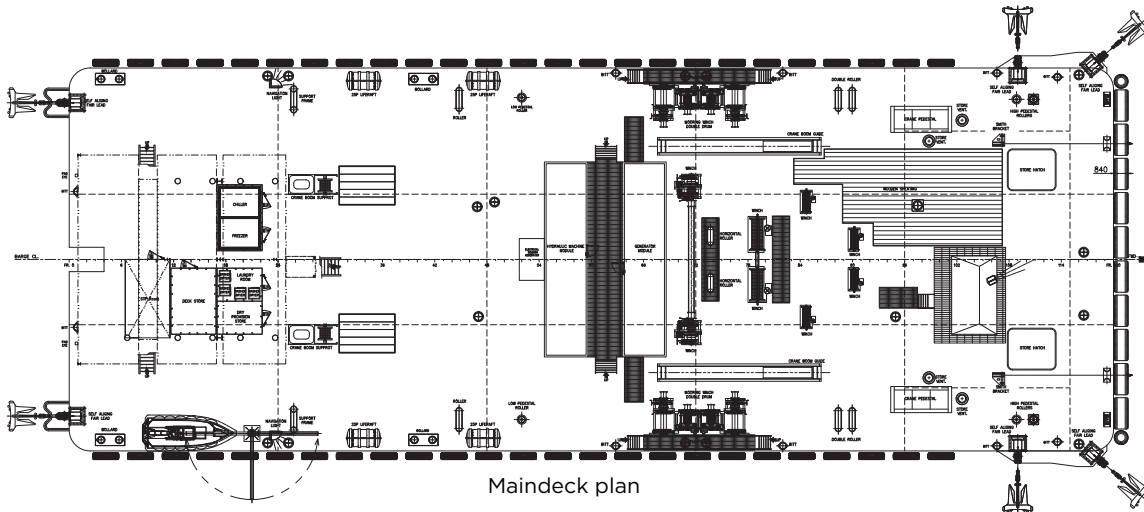
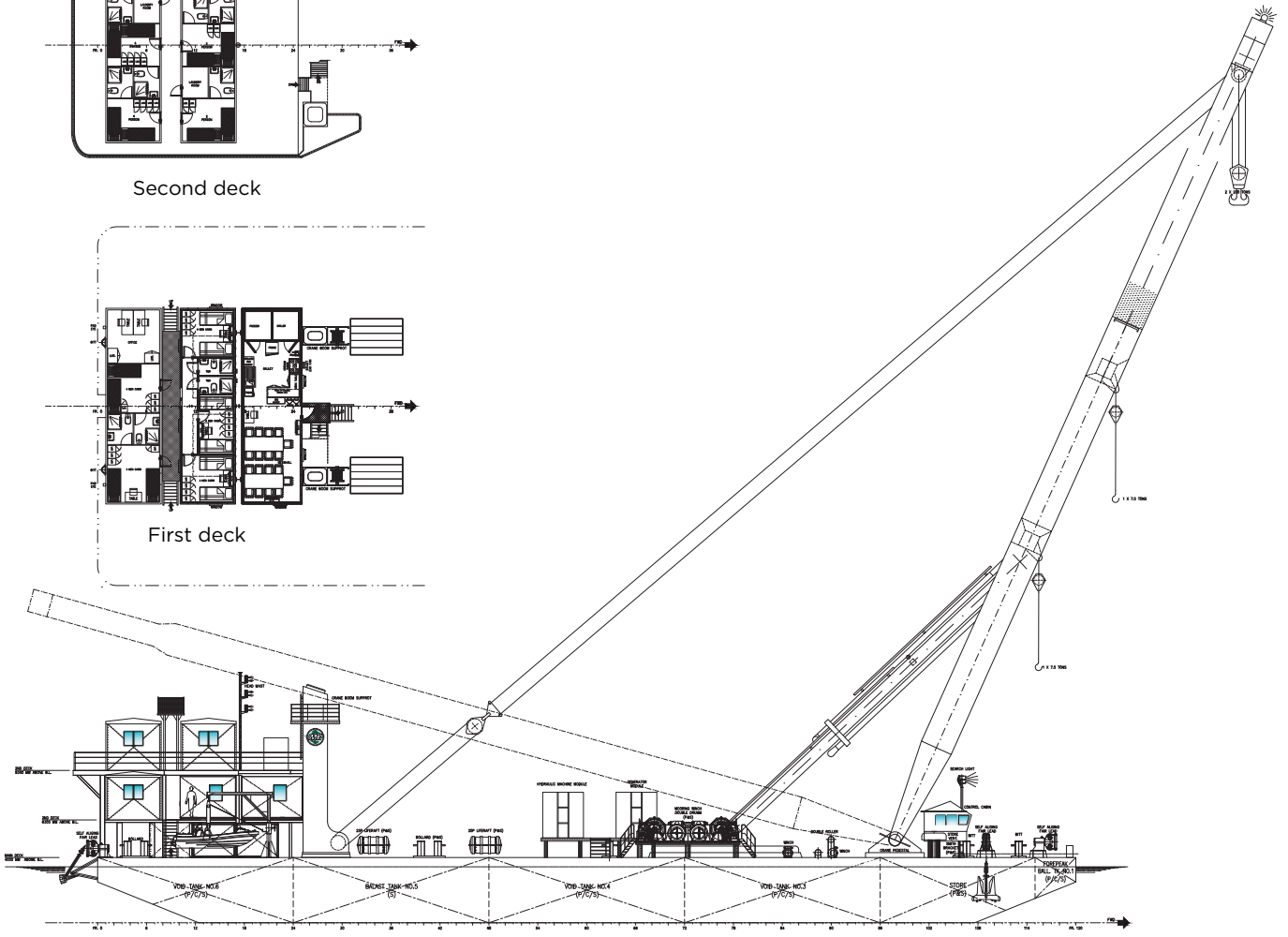
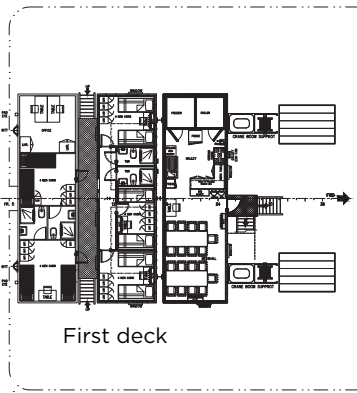
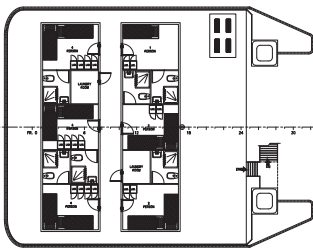
Mooring winches	4x double drum waterfall type (2 each, on starboard and portside); Total number of drums 6 + 2 spare
Winch monitoring system	Independent tension and line-out monitoring system, display fitted in control room loadwise systems
Number of mooring points	Six point mooring
Mooring winch particulars	Line pull 35 mt; brake holding capacity 50 mt
Mooring wire details	Each drum is fitted with wire of length 500 m and diameter 30 mm
Anchors	4x stockless fluke type of 4 mt each, stowed on anchor racks over side on each corner of the barge
Tugger winches	2x electro-hydraulic type; each fitted with wire of length 150 m and diameter 24 mm
Winch controls	All mooring and tugger winches can be locally operated and from the control cabin
Fenders	Bow fenders are heavy - duty synthetic round bar-type, side fenders are heavy tyre type
Towing bridle	Wire bridle fitted with chafing chain and retrieval wire; certified

Firefighting/safety equipment

Life saving appliances	40 persons
Fire fighting appliances	As per CLASS and SOLAS requirements

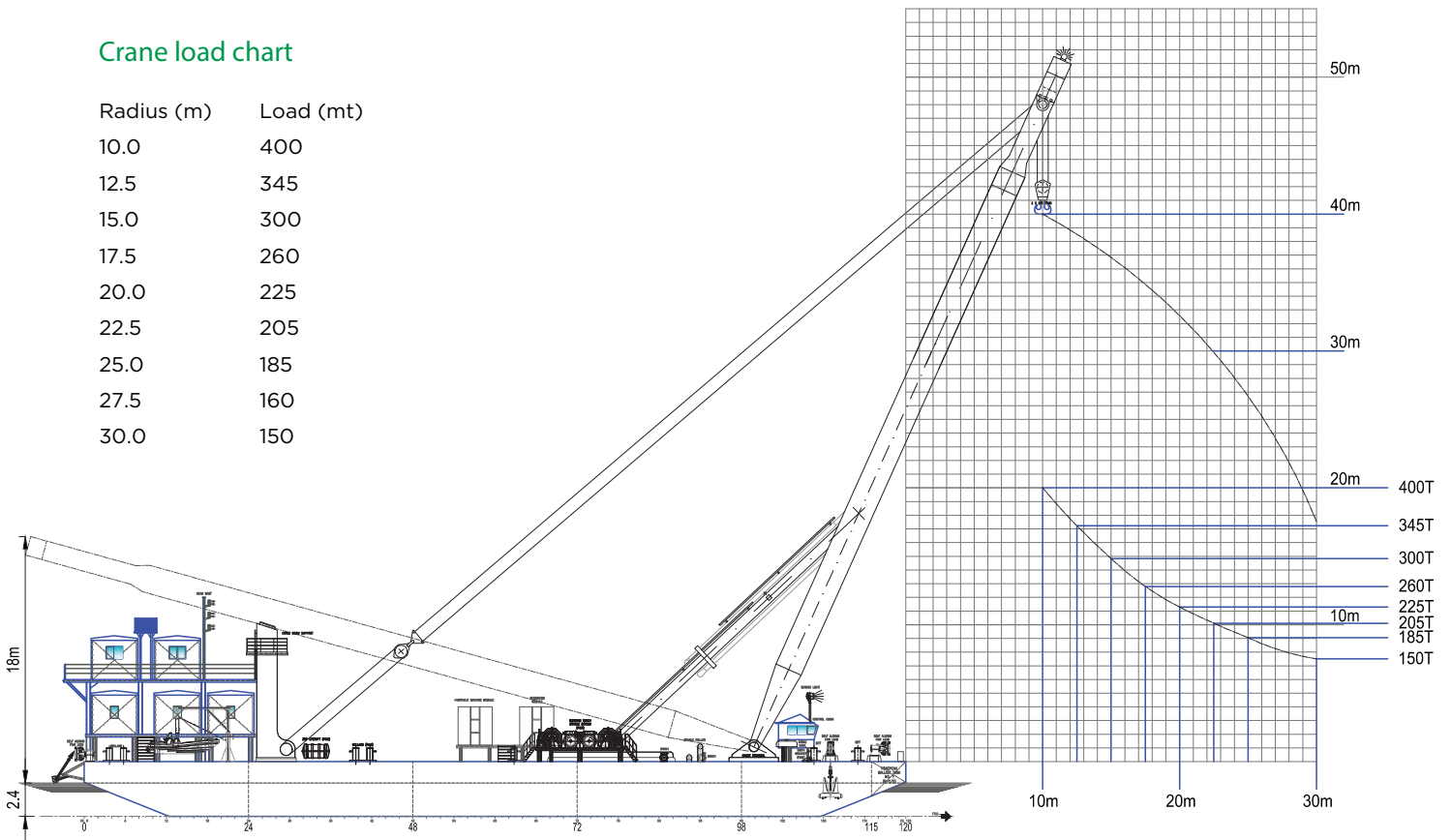
Insurance/trading limits

Insurance	Hull & Machinery cover up to hull value, P & I Cover including Salvors Liability cover from the Shipowners' Manual Protection and Indemnity Association, Luxembourg
Trading limits	Arabian Gulf, Gulf of Oman, Red Sea, Arabian Sea, Indian Ocean, East Coast of Africa and adjoining states



Crane load chart

Radius (m)	Load (mt)
10.0	400
12.5	345
15.0	300
17.5	260
20.0	225
22.5	205
25.0	185
27.5	160
30.0	150



Mubarak Marine LLC | PO Box 7220 | Dubai Maritime City | UAE

T+971 4 586 5200 | F +971 4 586 5299 | marketing@mubarak.ae | mubarakmarine.com

Revision September 2022 | All technical details are provided as a guide only and are subject to owner's changes without notice