

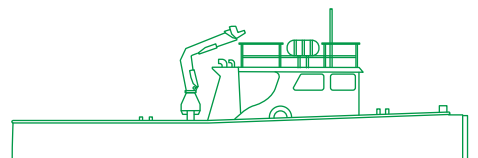


مبارك البحرية
Mubarak Marine



Adel Harbour tug

At over 16 m in length, this highly manoeuvrable harbour tug is powered by two Scania marine diesel engines with an output of 662 bhp, and has accommodation for a crew of four.



Registration

Year of build/Rebuilt	1978/1996
Port of registry	Dubai
Flag	UAE
Official number	4637
Call sign	A6E2624
Class	Tasneef
Operator	Mubarak Marine LLC

Dimensions

Length overall	16.5 m
Breadth	5.4 m
Depth	3 m
Draft	1.5 m

Machinery/propulsion

Main engines	2x Scania 6 cylinders DS1167
Horsepower	622 bhp
Gearbox	MG 5091
Steering gear	Hand hydraulic
Generator	1x Daimler Benz DM314, 30kw at 1500 rpm

Tonnage

GRT	52 t
NRT	15 t

Performance

Cruising speed	8.5 knots
Bollard pull	6.3 mt

Fuel consumption

Towing	240 imp gal
Free running	144 imp gal
Fresh water consumption	0.5 mt

Capacities

Fuel oil	2300 imp gal
Fresh water	1.5 mt

Navigation/communication equipment

Magnetic compass	1x Daiko
Navigation light	6 nos
GPS	1x 9mhz Garmin 3010C
VHF	1x Sailor RT2048, 1x Marine STR-6000A
AIS	1x Camino 201
Search light	1 no
Navtex	1x SNX-300 Samsung

Safety equipment

Life rafts	1x 10 persons
Life buoys	2 nos
Life jackets	4 nos
Fire extinguisher	1x dry powder, 2x CO ₂

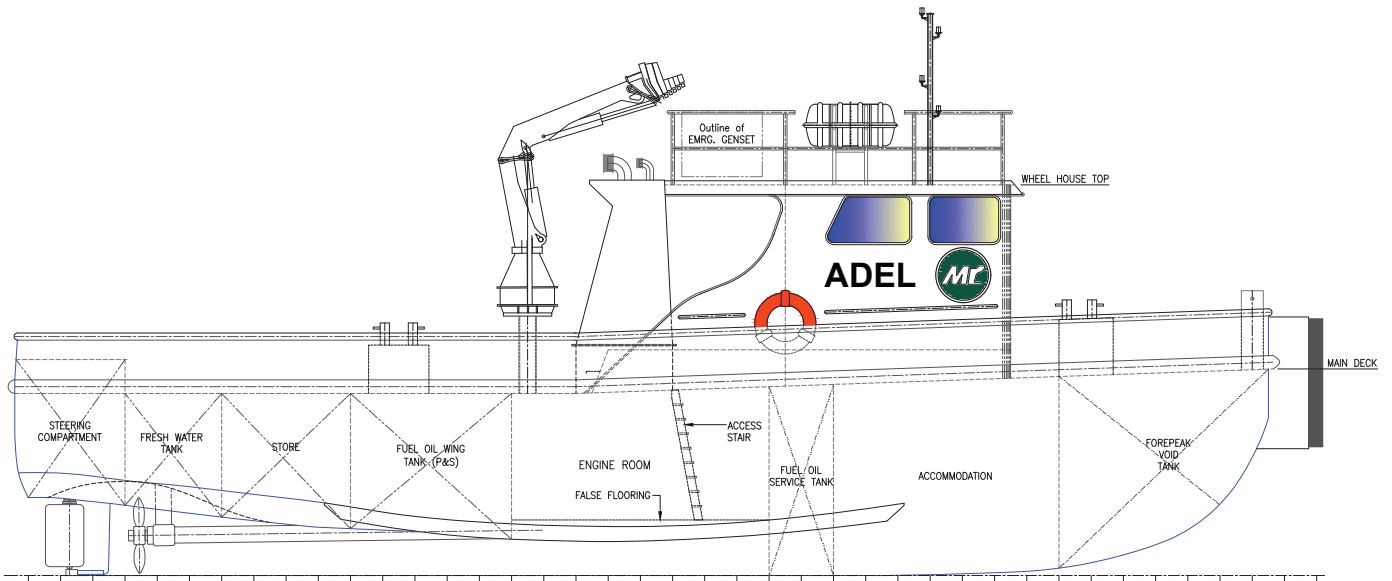
Lifting/handling

Towing hook	1 no
Crane	Atlas Hydraulic Knuckle-up, telescopic of 3 mt

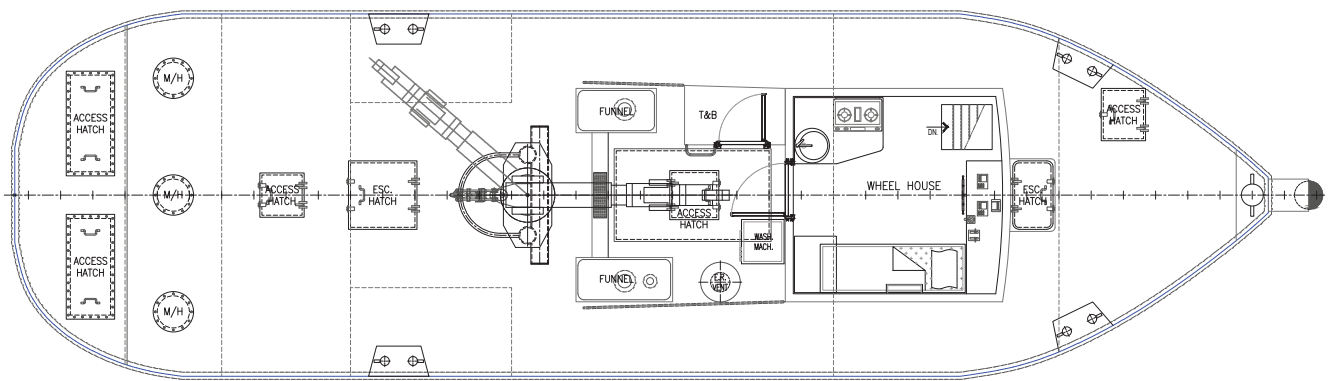
Accommodation

Total	4 berths
-------	----------

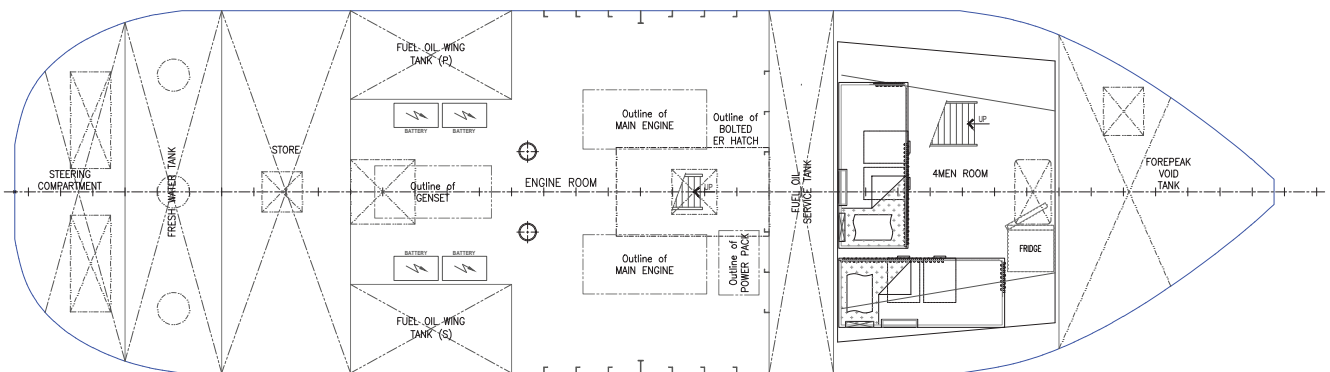




Outboard profile



Main deck plan



Below main deck plan

Mubarak Marine LLC | PO Box 7220 | Dubai Maritime City | UAE

T+971 4 586 5200 | F +971 4 586 5299 | marketing@mubarak.ae | mubarakmarine.com

Revision July 2023 | All technical details are provided as a guide only and are subject to owner's changes without notice