

TUG VOLANS



Dimension

Length Overall	: 29.00 meters
Length BP	: 26.50 meters
Beam Moulded	: 9.00 meters
Depth Mld.	: 4.25 meters
Draft Designed	: 3.50 meters
Draft Maximum	: 3.90 meters

Tonnage

Deadweight	: 148.40 metric tons
GRT	: 247.00 metric tons
NRT	: 74.00 metric tons

Machinery / Propulsion

Main Engine	: Yanmar M220 EN 2x1200 BHP at 800RPM c/w Gearbox, Total 2400 BHP
Propellers	: 4 Bladed Semi Skew, Diameter 2000mm, 2x Fixed Pitch
Bow Thrusters	: 1x 1.5 tonnes fixed pitch bow thruster
Steering Gear	: Wagner LB2-4.0-3.5-BB2

Liquid Storage Capacity

Fuel/Gas Oil	: 185.00 cubic meters
Lubricating Oil	: 2.30 cubic meters
Fresh Water	: 51.00 cubic meters
Dirty Oil	: 2.30 cubic meters

Navigational & Communication Equipment

Gyrocompass	: 1 Sperry MK-37
Autopilot	: 1 Course Master 650
Magnetic Compass	: 1 Daiko Keiki, Model SR 150 PK

Registration

Year Built	: 2004
Owner	: Mubarak Marine LLC
Port / No. of Registry	: Dubai
Call sign	: A6E 3103
Official Number	: 5438
Class	: Lloyds Register
IMO No.	: 9298856
Builder	: Labroy Shipbuilding & Engineering PTE Ltd

Cargo Deck

Area	: 70.00 square meters
Deck Strength	: 5.00 ton/square meters

Deck Equipment

Anchor & Chain	: 2 x 480 kg; Chain 275mm x 19mm Diameter U2 Grade
----------------	---

Electric Power Generation

Diesel Generator Engine	: 6CTA 8.3; 2x 145 KW
Alternator	: Leroy Somer LSA M47.IL9 120 KW, 415VAC/50Hz/3Ph

Cargo Discharge Capacity

Fuel/Gas Oil	: 8.000 m ³ /hr at 30m head
Potable Water	: 8.000 m ³ /hr at 30m head

Performance

Speed	: Free Running 11Knots at Ballast
Bollard Pull	: 30.5 metric tons
Endurance	: About 35 days(at Max. RPM)
Range	: About 3168NM at 11K Average

Fuel Consumption

Towing	: 5.10 metric tons
Free Running	: 4.10 metric tons
Fresh Water Consumption	: 1.000 metric ton

Radar : 1 Kodon-MDC-1040,
 : 1 Samyung SMR-3600
 Echo Sounder : 1 Hondex, Model HE-770
 GPS Navigator : 1 Kodon KGP -920
 : 1 C-Map,HGP 2800 Haiyang
 EPIRB : 1 GME Model:MT 403FF-S503E
 SART : 2 Samyung – SAR-9
 Navtex Receiver : 1 Samyung – SNX-200
 VHF-FM Transceiver : 2 Samyung –STR-6000A
 Portable VHF : 3 Submersible HX-370S
 GMDSS : Samyung – SRG 1150DN
 MF/HF DSC Radio Eqpt
 Thuraya : Telephone/Fax

Towing & Anchor Handling Equipment

AH/Towing : 10.000mt @ 10.000m/min
 Winch : Electro Hydraulic;Wire 36mm
 diameter x 1000m
 Brake Holding 70t at 1st Layer Static
 Stern Roller : Fitted

Safety / Fire Fighting

Life Rafts : 2 x 20 persons, Inflatable
 Life Buoys / Life Jackets : 8 nos. / 17 nos.
 CO2 Flooding System : Yes
 Fireman Outfit : 1
 Emergency Fire Pump : 1 set

Load/Discharge Connections

Fuel Oil/ : Female-3”Kamlock/
 Potable Water : Female-2.5” Kamlock
 Reefer Connections : 2 x 240/1/50 32A;2 x 415/3/50 63A

Accommodation

Cabins : 3 x 1 –Berth cabins; 3 men
 1 x 6 –Berth cabins; 6 men
 1 x 4 – Berth cabins; 4 men

Total 13 men

Note : All details in good faith without guarantee subject to change without prior notice.



FACTUAL STATEMENT FOR BOLLARD PULL

Office: **Dubai**

Date: **18 February 2014**

This Certificate is issued to confirm that the undersigned Surveyor to Lloyd's Register EMEA attended the bollard pull trials stated below for the purpose of ascertaining the bollard pull capacity of the subject ship, at the request of Mubarak Marine LLC

Ship Name: VOLANS	IMO Number: 9298856	
Owner: Mubarak Marine LLC	Shipbuilder: PT Nanindah Mutiara	Build date: 13 March 2004
	Yard Number: T117	
Location bollard pull trials held: Hamriyah Port, Dubai	Trial date: 18 February 2014	

The vessel under the conditions described below exerted a Steady Bollard over a minimum duration of 10 minutes of 30.00 tonnes force at 800 Engine RPM.

The Maximum Bollard Pull during the same 10 minute interval was 30.5 tonnes force.

The results were recorded during the trials without the main engine being overloaded. Shaft driven auxiliaries were not fitted.

The relevant particulars of the ship and its machinery and propellers together with the significant trials data are listed below. The trials were completed and the following results were obtained:

SHIP PARTICULARS

Length B.P. (m) 26.5	Moulded Depth (m) 4.25
Moulded Breadth (m) 9.0	Maximum Draught (m) 3.68

MACHINERY PARTICULARS

Engine Builders Yanmar	Propeller Manufacturer Teignbridge International Ltd.
Engine Type M220EN	Propeller Plan number C3243A/Q-1
Engine numbers FTS 0827 (SB), FTS 0828 (Ps)	Number Propeller fitted 2
Number Engine fitted 2	Fixed/CPP Fixed
Engine Rating (MCR) (kW) 883 (each)	Propeller Diameter (m) 2.2
Gear Ratio 1:4	Number of Blades 4
Engine RPM at approved max power 800	Propeller RPM 200

Lloyd's Register Group Limited, its affiliates and subsidiaries and their respective officers, employees or agents are, individually and collectively, referred to in this clause as 'Lloyd's Register'. Lloyd's Register assumes no responsibility and shall not be liable to any person for any loss, damage or expense caused by reliance on the information or advice in this document or howsoever provided, unless that person has signed a contract with the relevant Lloyd's Register entity for the provision of this information or advice and in that case any responsibility or liability is exclusively on the terms and conditions set out in that contract.

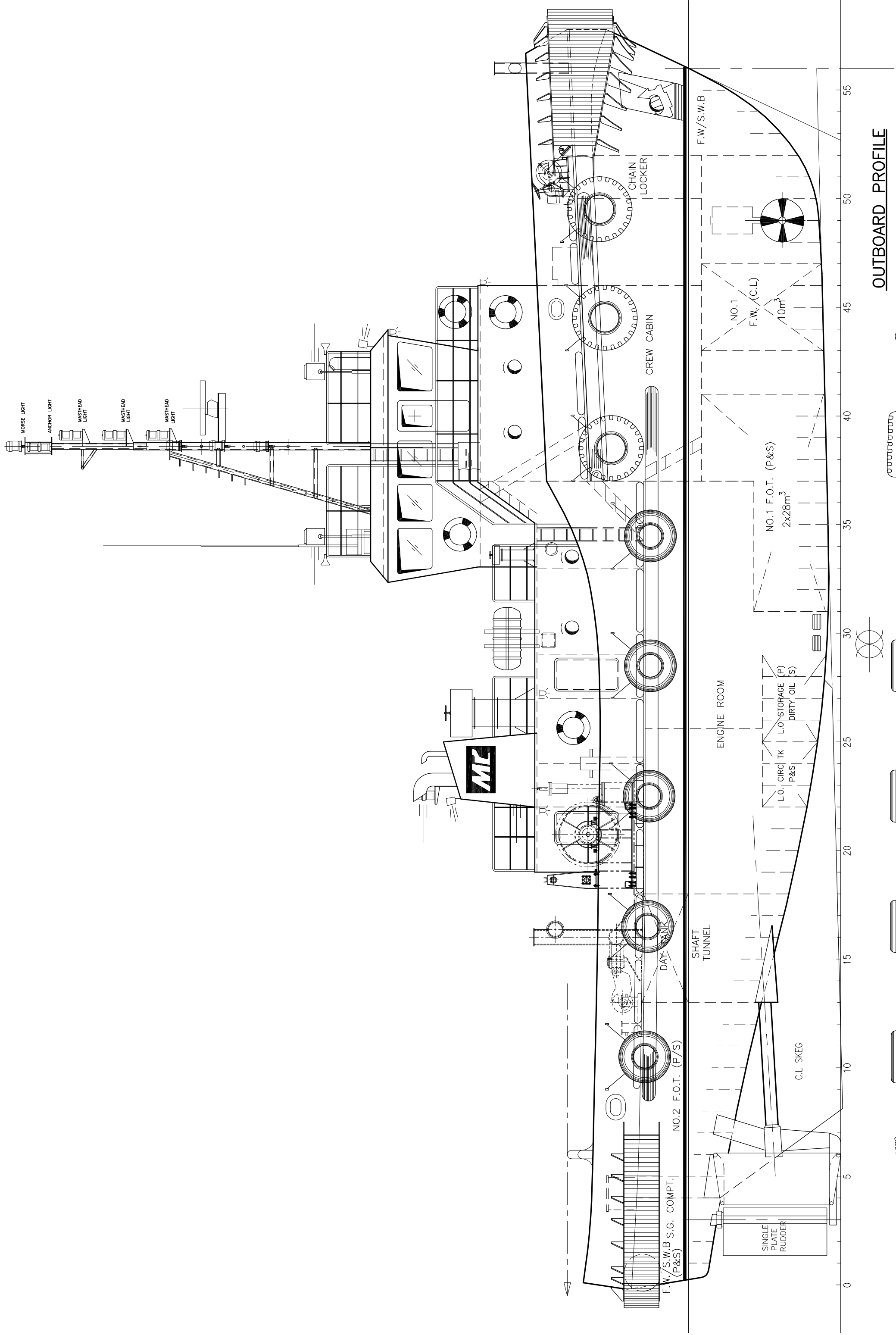
TRIAL PARTICULARS

Draught Forward (m) 2.8	Water depth (m) 8.0
Draught Aft (m) 4.65	Temperature of Water (°C) 21.0
Mean Draught (m) 3.7	Density of Water (t/m ³) 1.025
Trim (m) 1.85	Wind Speed (knots) 12 SW
Displacement (t) 448.21	Current Speed (knots) 1.5
Immersion of Propeller tips (% diameter) 100	Observed Wave Height (m) 0.0
Distance from stern of Ship to Pier (m) 300	Height of Towing Hook above Water Level (m) 2.5
Type of Load Cell 50t T24 Load Cell. SN:2050-748T24	Height of Bollard above Water Level (m) 1.0

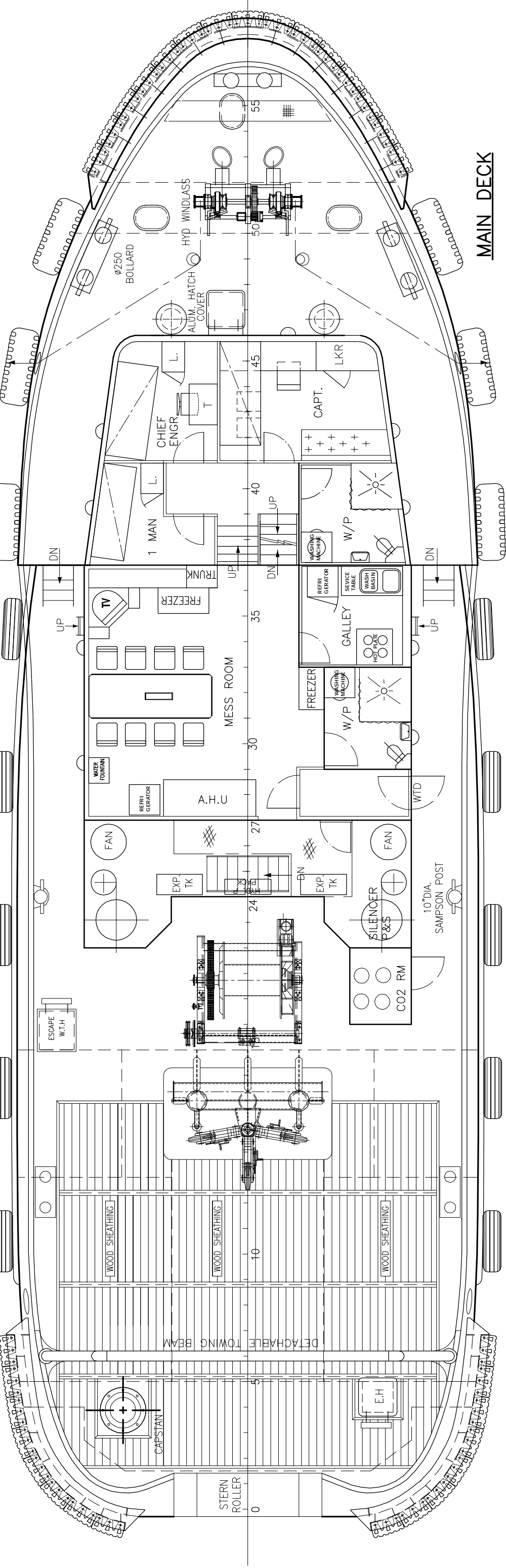


Barry Clarkson
Surveyor to Lloyd's Register EMEA

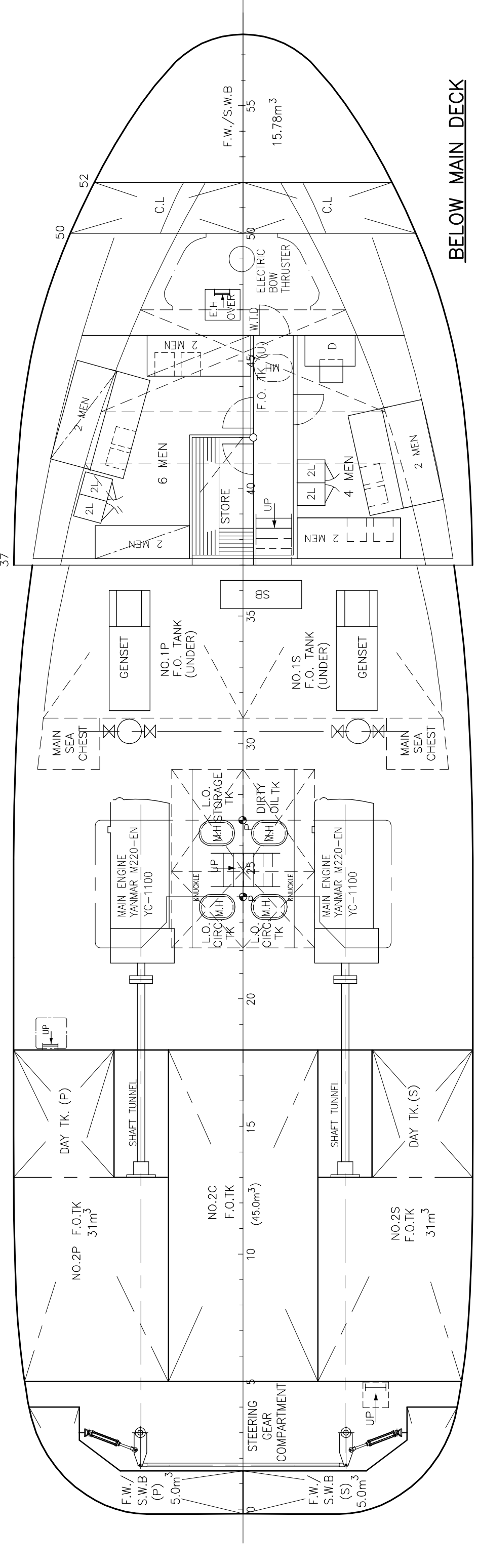
A subsidiary of Lloyd's Register Group Limited



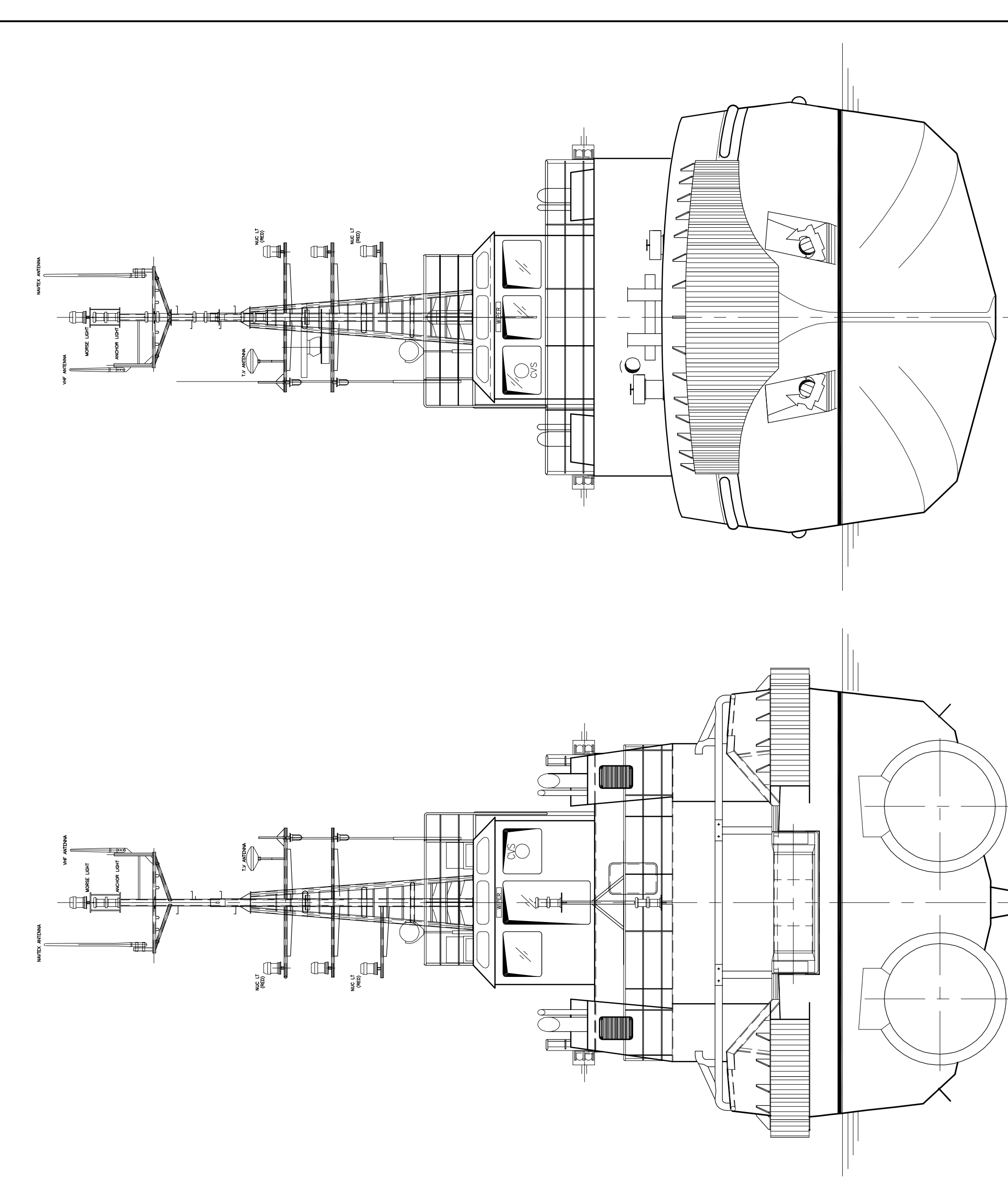
OUTBOARD PROFILE



MAIN DECK

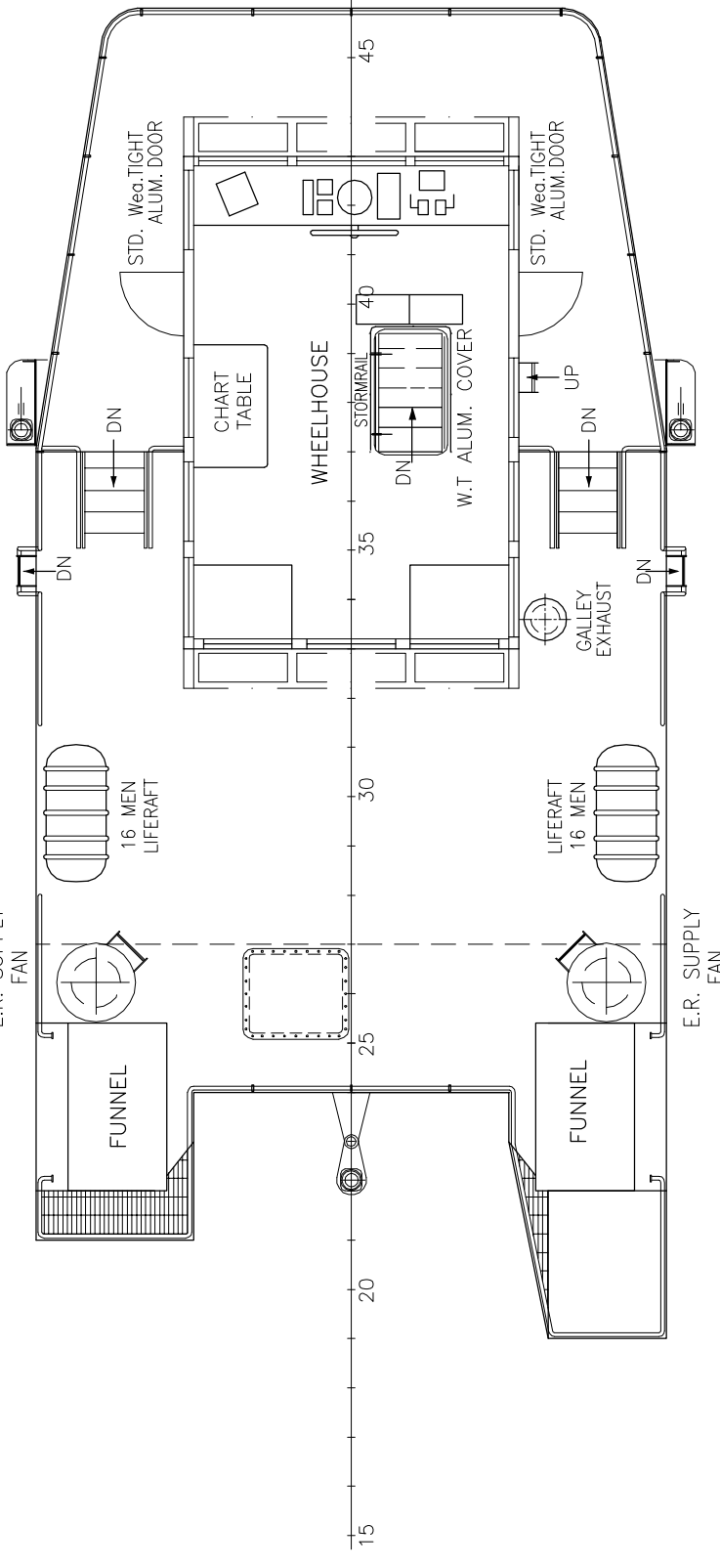


BELOW MAIN DECK

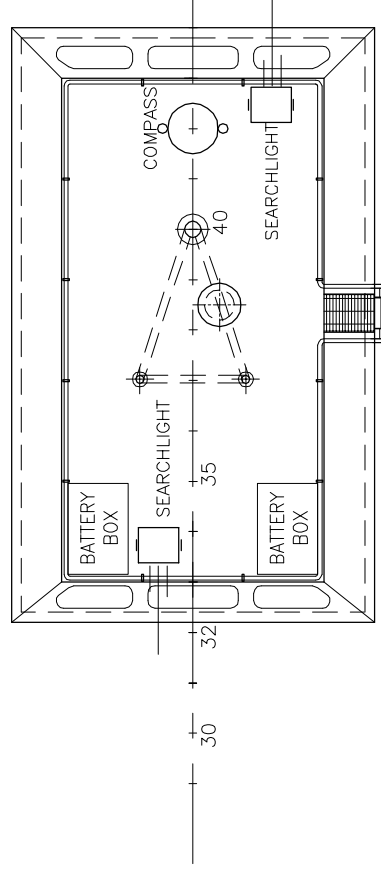


STERN VIEW

FRONT VIEW



WHEELHOUSE DECK

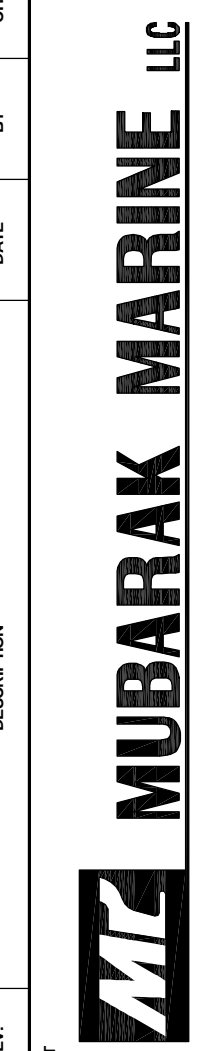


WHEELHOUSE TOP

PRINCIPAL PARTICULARS

LENGTH O.A.	29.00m
LENGTH W.L.	28.00m
LENGTH B.P.	26.50m
BEAM MLD.	9.00m
DEPTH MLD.	4.25m
DRAFT DESIGNED	3.50m
COMPLEMENT	13 MEN

CLIENT		DESCRIPTION		DATE	BY	CHKD.
0	REVISED AS PER SURVEY ON BOARD BY FOCUS MARINE PERSONNEL	09	OCT	07	NCL	PRY
PROJECT NAME		DRAWING TITLE		DATE	SCALE	SHEET NO.
MUBARAK MARINE LLC P.O. BOX 7220 DUBAI U.A.E. TEL: 2660180 FAX: 2668845		MT "VOLANS"		09	1 : 75	1 OF 1
DRAWING NO.		DRAWING TITLE		DATE	SCALE	SHEET NO.
07-166-GA-003	GENERAL ARRANGEMENT PLAN	09	OCT	07	1 : 75	1 OF 1
DRAWN BY	CHECKED BY	APPROVED BY	DATE	SCALE	SHEET NO.	REVISION
INDIEPEZ	PRY	MM / AA	09	OCT	07	0
THIS DRAWING IS THE PROPERTY OF MUBARAK MARINE LLC. IT IS TO BE USED ONLY FOR THE PROJECT AND NOT TO BE REPRODUCED OR COPIED IN ANY MANNER WITHOUT THE WRITTEN APPROVAL OF MUBARAK MARINE LLC.						
FOR: <input type="checkbox"/> PRELIMINARY <input checked="" type="checkbox"/> COMMENT <input type="checkbox"/> INFORMATION <input type="checkbox"/> CALCULATION <input type="checkbox"/> CONSTRUCTION <input type="checkbox"/> APPROVAL						
P.O. Box 72967 / DUBAI UNITED ARAB EMIRATES TEL: 2660180 FAX: 2668845 mannefocus Tel: 33 83 23 88 88 e-Mail: focus@mannefocus.com						



MT "VOLANS"

GENERAL ARRANGEMENT PLAN

